



UNCTAD



### MARITIME PROFILE: NORWAY

#### GENERAL INFORMATION FOR 2022

**Population**  
5.434 Millions

**GDP**  
-

**Merchandise trade<sup>1</sup>**  
355 350 Millions current US\$

**Land area<sup>2</sup>**  
(j) 364 285 Km<sup>2</sup>

**GDP growth**  
3.30 %

**Transport services trade<sup>3</sup>**  
104 063 Millions current US\$

#### MARITIME KEY FIGURES FOR 2022

**Coast/area ratio<sup>2</sup>**  
146.0 m/km<sup>2</sup>

**Ship building<sup>4</sup>**  
76 738 GT

**Ship recycling<sup>4</sup>**  
6 051 GT

**Fleet - National flag<sup>5</sup>**  
23 355 Thousands DWT

**Fleet - National flag<sup>5</sup>**  
1 712 ships

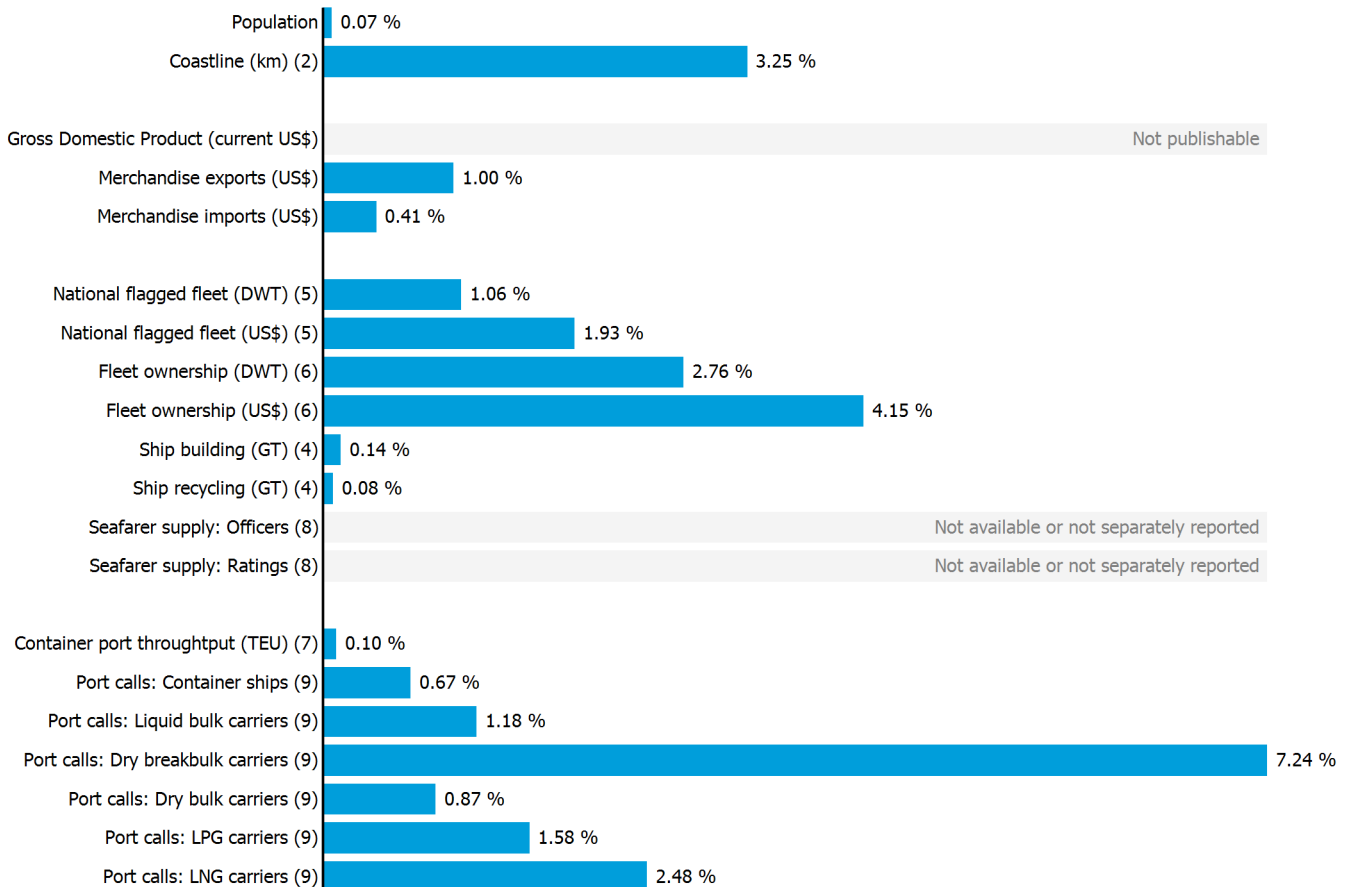
**Fleet - Ownership<sup>6</sup>**  
60 358 Thousands DWT

**Container port throughput<sup>7</sup>**  
881 238 TEU

**Number of seafarers<sup>8</sup>**  
..

**Number of port calls<sup>9</sup>**  
806 165

#### WORLD SHARES FOR 2022



# NORWAY

## INTERNATIONAL MERCHANDISE TRADE

### Total merchandise trade

(millions of US\$)

	2005	2010	2015	2022
Merchandise exports	103 759	130 657	103 915	249 805
Merchandise imports	55 488	77 330	76 424	105 545
Merchandise trade balance	48 271	53 327	27 491	144 260

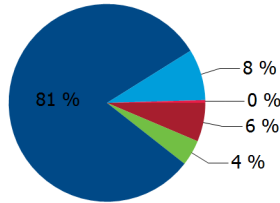
**+56.0 %**

Merchandise exports growth rate in 2022

### Export structure by product group in 2022

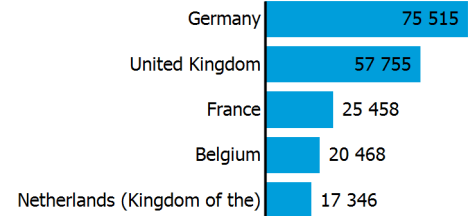
(as % of total exports)

- All food items
- Ores and metals
- Fuels
- Manufactured goods
- Other



### Top 5 partners in 2022

(exports, millions of US\$)



## INTERNATIONAL TRADE IN TRANSPORT SERVICES

### Services exports by main category<sup>10</sup>

(as % of total services)

	2005	2010	2015	2022
Transport	54.6	44.1	43.5	45.2
Travel	11.7	11.3	11.7	10.7
Other services	32.1	42.8	42.8	40.5

**+31.9 %**

Transport services exports growth rate in 2022

### Total trade in transport services<sup>10</sup>

(millions of US\$)

	2005	2010	2015	2022
Transport services exports	16 279	18 262	18 103	22 865
Transport services imports	9 181	11 281	10 222	12 389
Transport services trade balance	7 097	6 980	7 881	10 475

## NATIONAL FLEET

### Carrying capacity by type of ship<sup>5</sup>

(Thousands DWT)

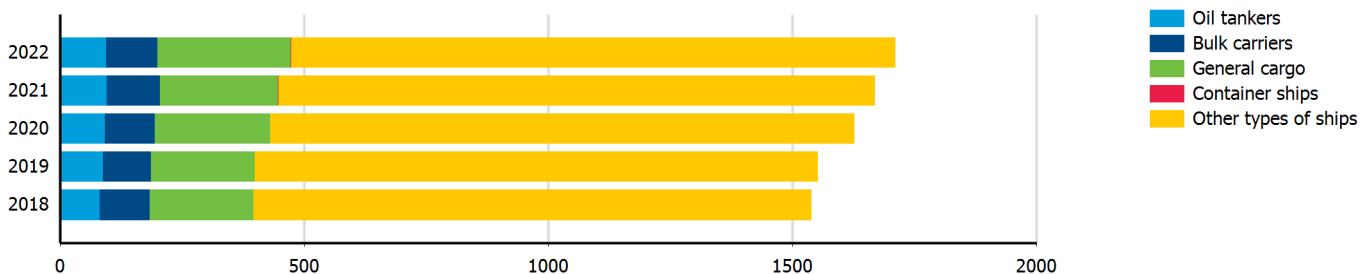
	2005	2010	2015	2022
Total fleet	24 243.0	20 811.2	19 517.4	23 354.9
Oil tankers	10 971.0	9 356.8	5 849.2	7 330.2
Bulk carriers	6 866.0	4 046.3	5 566.2	5 882.7
General cargo	3 318.0	3 315.8	388.6	909.7
Container ships	72.0	7.3	0.0	3.1
Other types of ships	3 016.0	4 085.1	7 713.5	9 229.2

**-2.9 %**

Fleet growth rate in 2022

### Fleet by type of ship<sup>5</sup>

(Number of ships)



# NORWAY

## LINER SHIPPING CONNECTIVITY

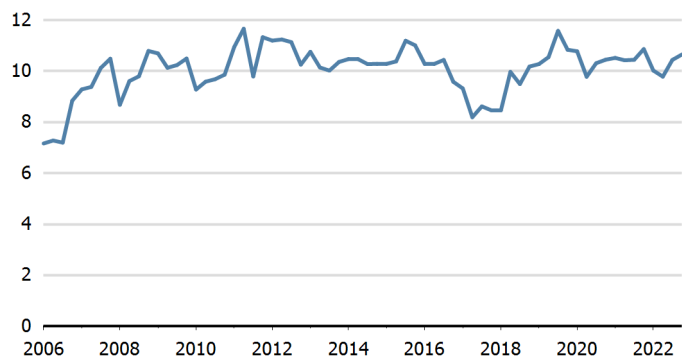
### Bilateral connectivity index - Top 10 partners in Q1 2022<sup>11</sup>

Can only take values between 0 (minimum) and 1 (maximum)

No data available

### Liner shipping connectivity index<sup>11</sup>

Maximum 2006=100 for China



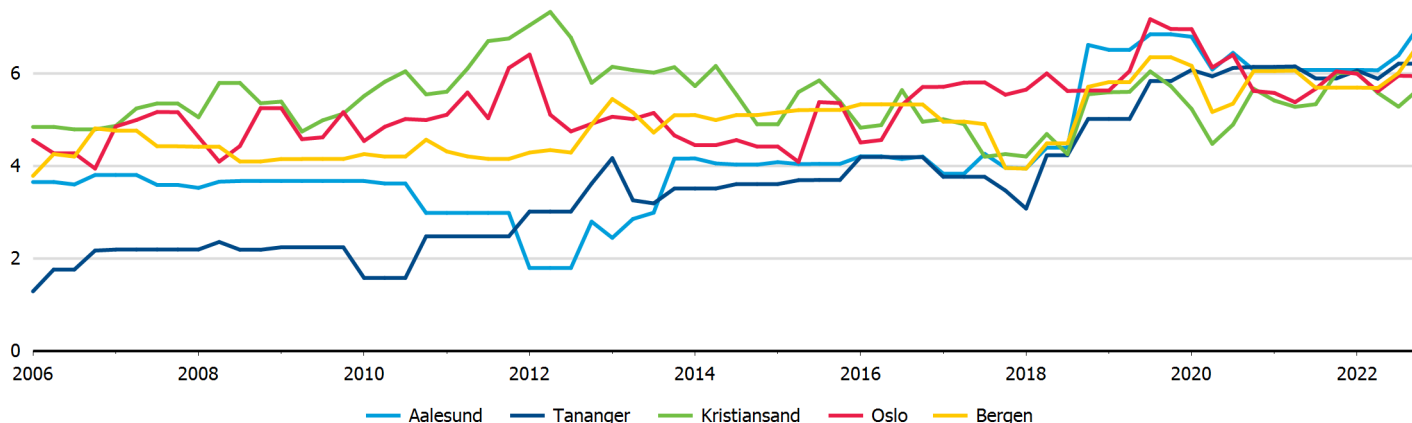
## PORT CALLS AND PERFORMANCE

### Port calls, time spent in ports, vessel age and size in 2022<sup>9</sup>

	Number of arrivals	Median time in port (days)	Avg age of vessels	Avg size (GT) of vessels	Avg cargo carrying capacity (DWT) per vessel	Avg container carrying capacity (TEU) per container ship	Maximum size (GT) of vessels
All ships	806 165	0.43	13	4 036	7 348	794	184 089
Liquid bulk carriers	6 338	0.61	15	10 888	17 569	..	166 308
Liquefied petroleum gas carriers	939	0.84	11	8 643	9 386	..	47 500
Liquefied natural gas carriers	357	0.32	16	18 139	13 205	..	121 597
Dry bulk carriers	2 427	0.83	16	18 920	31 738	..	108 151
Dry breakbulk carriers	31 897	0.34	24	2 818	3 406	..	42 515
Roll-on/ roll-off ships	4 242	..	18	11 027	6 792	..	70 853
Container ships	2 961	0.35	18	8 464	..	794	17 488
Passenger ships	757 004	..	12	3 914	..	..	184 089

### Port liner shipping connectivity index - Top 5 ports in 2022<sup>11</sup>

Maximum 2006=100 for China, Hong Kong SAR



# NORWAY

**Source:** Detailed data sources are available in the documentation of the corresponding tables in the Data Center ([http://stats.unctad.org/data\\_center](http://stats.unctad.org/data_center)). A link to these tables is provided in each section of the profile.

## Notes:

- 1 Sum of exports and imports.
- 2 Land area refers to the total area of a country excluding area under inland water bodies. It differs from the country area, that includes area under inland water bodies, but excludes offshore territorial waters.  
Coastline length based on data calculated in 2000 from the World Vector Shoreline database at 1:250,000 scale.
- 3 Sum of exports and imports. Statistics presented correspond to the 6th edition of the IMF Balance of Payments and International Investment Position Manual, 2009 (BPM6, 2009).
- 4 Propelled seagoing merchant vessels of 100 GT and above. Source: Clarksons Research (<https://www.clarksons.com/services/research/>).
- 5 Propelled seagoing merchant vessels of 100 GT and above, on 1 January. Source: Clarksons Research (<https://www.clarksons.com/services/research/>).
- 6 Propelled seagoing merchant vessels of 1000 GT and above, on 1 January. Source: Clarksons Research (<https://www.clarksons.com/services/research/>).
- 7 UNCTAD Secretariat, derived from various sources including Dynamar B.V. Publications, terminal operators and port authorities. Refers to year 2021.
- 8 Refers to year 2022. Source: BIMCO-ICS Manpower Report 2015 and BIMCO-ICS Seafarer Workforce Report, 2022 edition.
- 9 UNCTAD Secretariat, based on data provided by MarineTraffic (<http://marinetraffic.com>). Ships of 1000 GT and above.
- 10 Statistics presented correspond to the 6th edition of the IMF Balance of Payments and International Investment Position Manual, 2009 (BPM6, 2009).
- 11 UNCTAD Secretariat, generated from data provided by MDS Transmodal (<https://www.mdst.co.uk>).
- j Estimated. Data refers to 2020.

## Symbols for missing values:

- 0 Zero means that the amount is nil or negligible
- .. Not available or not separately reported
- Not applicable
- ... Not available, including no quotation
- # Non-relevant calculation
- Not publishable
- \*\*\* Negative accumulation of flows; Value included in regional and global totals

## Abbreviations & acronyms:

- DWT: Dead weight tons
- LNG: Liquefied natural gas
- LPG: Liquefied petroleum gas
- GDP: Gross domestic product
- GT: Gross tons
- TEU: Twenty foot equivalent unit

## Disclaimer:

The designations employed and the presentation of the material on *UNCTADstat* do not imply the expression of any opinion whatsoever on the part of the secretariat of the United Nations concerning the legal status of any country, territory, city or area, or of its authorities, or concerning the delimitation of its frontiers or boundaries.

Where the designations "economy" or "country or area" appear in texts or tables, they cover regions, countries, territories, cities or areas.

The designations "developing", "transition" and "developed" are intended for statistical convenience and do not necessarily express a judgement about the stage reached by a particular economy in the development process.

UNCTAD strives for the highest level of accuracy and is committed to promptly correcting any errors on its part. It does not guarantee or make any express or implied representations regarding the accuracy, reliability, correctness, fitness for use for a particular purpose, or otherwise, whatsoever, of any of the tables in *UNCTADstat*.

**Generation date:** 21 September 2023