

GENERAL PROFILE: SURINAME

GENERAL INFORMATION FOR 2020

Population
0.587 Millions

Exchange rate
9.310 SRD/US\$

GDP
3 458 Millions current US\$

Land area¹
(n) 156 000 km²

CPI growth
34.91 %

GDP growth
-10.10 %

INTERNATIONAL MERCHANDISE TRADE

Total merchandise trade

(millions of US\$)

	2005	2010	2015	2020
Merchandise exports	997	2 026	1 652	2 345
Merchandise imports	1 050	1 398	2 028	1 329
Merchandise trade balance	-53	628	-376	1 016

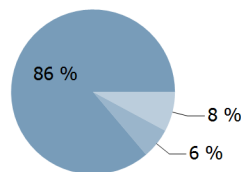
+10.3 %

Merchandise exports
growth rate in 2020

Export structure by product group in 2020

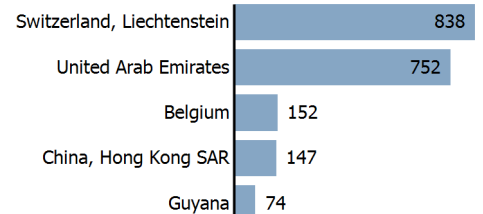
(as % of total exports)

- All food items
- Agricultural raw materials
- Other



Top 5 partners in 2020

(exports, millions of US\$)



INTERNATIONAL TRADE IN SERVICES

Total trade in services²

(millions of US\$)

	2005	2010	2015	2020
Services exports	204	241	177	103
Services imports	355	259	709	563
Services trade balance	-151	-18	-531	-460

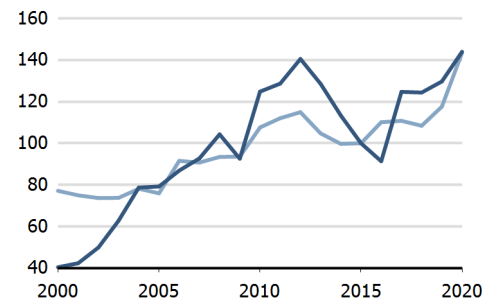
Services exports by main category²

(as % of total services)

	2005	2010	2015	2020
Transport	34.4	12.9	22.2	28.1
Travel	21.9	25.2	49.4	15.0
Other services	43.8	61.9	35.9	56.9

TRADE INDICES

- Terms of trade index
- Purchasing power index of exports



ECONOMIC TRENDS

Economic indicators

(millions of US\$ unless otherwise specified)

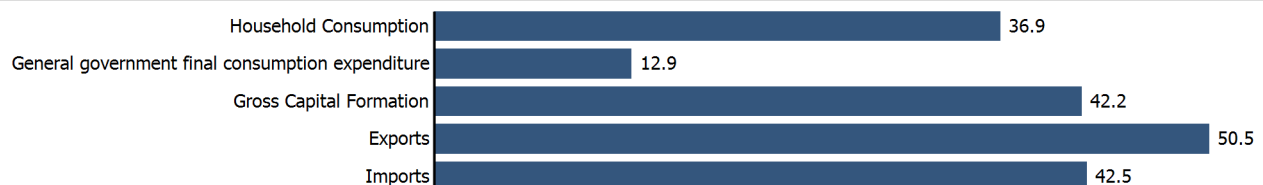
	2005	2010	2015	2020
GDP, current	2 193	4 368	4 787	3 458
GDP per capita, current US\$	4 391	8 256	8 562	5 895
Real GDP growth, y-on-y, %	3.92	5.16	-3.41	-10.10
Current account balance, % of GDP	-6.69	14.90	-16.43	7.50
Exchange rate (/US\$)	2.732	2.745	3.417	9.310

-10.1 %

Gross domestic product
growth rate in 2020

GDP by expenditure in 2019

(as % of total GDP)



SURINAME

FDI AND EXTERNAL FINANCIAL RESOURCES

Financial flows

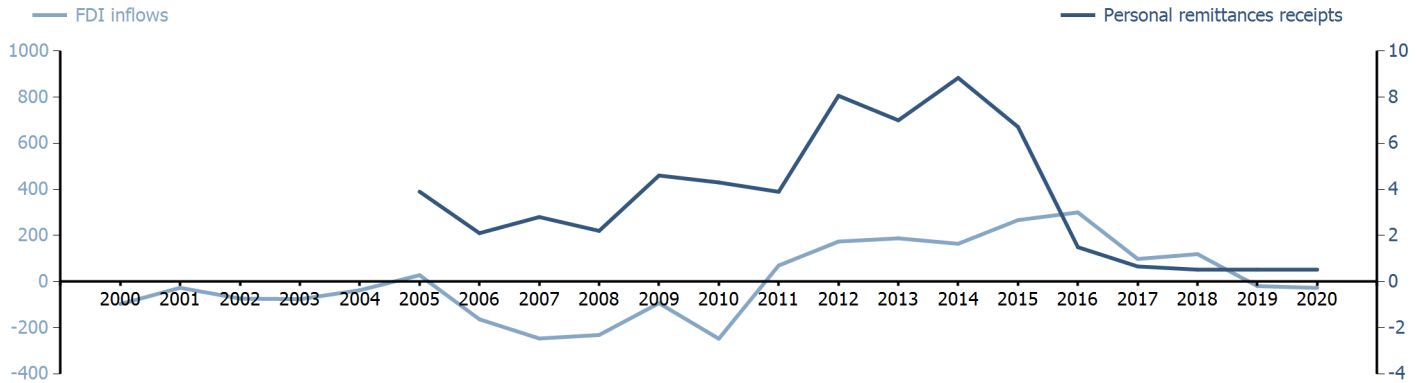
(millions of US\$ unless otherwise specified)

	2005	2010	2015	2020
FDI inflows	28.00	-247.70	266.74	-27.10
FDI outflows
Personal remittances, % of GDP	0.18	0.10	0.14	0.02

FDI outflows as % of GDP in 2020

Financial flows trends

(millions of US\$)



TRADE IN GOODS AND SERVICES

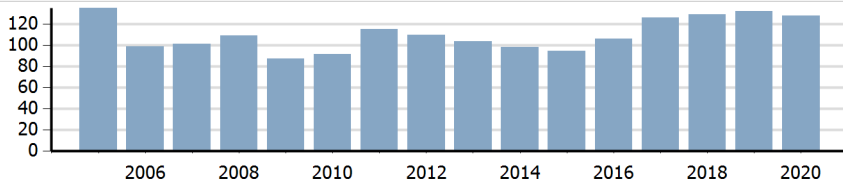
Trade balance indicators²

(as % and index)

	2005	2010	2015	2020
Balance, % of GDP	-5.85	15.31	-17.51	(e) 11.86
Balance, % of imports	-8.32	40.35	-31.27	(e) 20.46
Normalized balance	-0.043	0.168	-0.185	(e) 0.093

Trade openness²

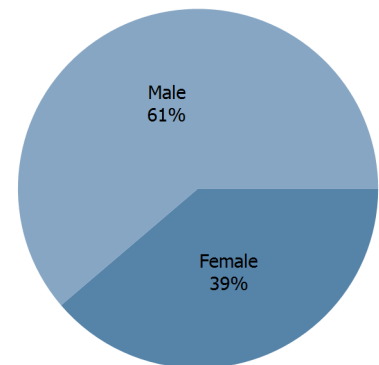
(sum of imports and exports as % of GDP)



LABOUR FORCE

Labour force by gender in 2020

(as % of total labour force, all sectors)



OTHER INDICATORS

Maritime transport indicators

	2005	2010	2015	2020
Merchant fleet, national flag (thousands of DWT)	6	6	7	7
Liner shipping connectivity index (maximum 2006 = 100 for China)	..	11.73	9.05	8.90
Container port throughput (TEU)

0 %

Share of the total world merchant fleet in 2020

Information economy indicators

(as % of)

	2005	2010	2015	2020
Share of ICT goods, % of total exports	0.22	0.08	0.04	..
Share of ICT goods, % of total imports	3.33	3.01	2.41	..
Share of workforce involved in the ICT sector

SURINAME

Source: UNCTADstat (<http://unctadstat.unctad.org>)

Notes:

- 1 Land area refers to the total area of a country excluding area under inland water bodies. It differs from the country area, that includes area under inland water bodies, but excludes offshore territorial waters.
- 2 Statistics presented correspond to the 6th edition of the IMF Balance of Payments and International Investment Position Manual (BPM6, 2009).
- e Estimated.
- n Estimated. Data refers to 2016.

Symbols for missing values:

- 0 Zero means that the amount is nil or negligible
- .. Not available or not separately reported
- _ Not applicable
- ... Not available, including no quotation
- # Non-relevant calculation
- Not publishable
- *** Negative accumulation of flows; Value included in regional and global totals

Abbreviations & acronyms:

- DWT: Dead weight tons
- FDI: Foreign direct investment
- GDP: Gross domestic product
- ICT: Information and communication technology
- TEU: Twenty foot equivalent unit
- US\$: United States dollar

Disclaimer:

The designations employed and the presentation of the material on UNCTADstat do not imply the expression of any opinion whatsoever on the part of the secretariat of the United Nations concerning the legal status of any country, territory, city or area, or of its authorities, or concerning the delimitation of its frontiers or boundaries.

Where the designations "economy" or "country or area" appear in texts or tables, they cover regions, countries, territories, cities or areas.

UNCTAD strives for the highest level of accuracy and is committed to promptly correcting any errors on its part. It does not guarantee or make any express or implied representations regarding the accuracy, reliability, correctness, fitness for use for a particular purpose, or otherwise, whatsoever, of any of the tables in UNCTADstat.

Generation date: 05 January 2022