

GENERAL PROFILE: MYANMAR

GENERAL INFORMATION FOR 2021

Population
53.798 Millions

Exchange rate
1 616.360 MMK/US\$

GDP
49 255 Millions current US\$

Land area¹
(q) 652 670 km²

CPI growth
6.33 %

GDP growth
-21.50 %

INTERNATIONAL MERCHANDISE TRADE

Total merchandise trade

(millions of US\$)

	2005	2010	2015	2021
Merchandise exports	3 776	8 661	11 429	15 145
Merchandise imports	1 908	4 760	16 885	14 322
Merchandise trade balance	1 868	3 901	-5 456	823

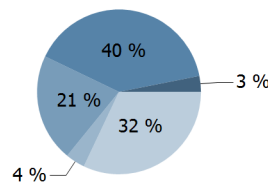
-9.3 %

Merchandise exports
growth rate in 2021

Export structure by product group in 2021

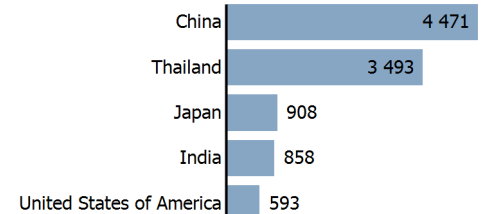
(as % of total exports)

- All food items
- Agricultural raw materials
- Fuels
- Manufactured goods
- Other



Top 5 partners in 2021

(exports, millions of US\$)



INTERNATIONAL TRADE IN SERVICES

Total trade in services²

(millions of US\$)

	2005	2010	2015	2021
Services exports	281	369	3 749	(e) 2 149
Services imports	497	789	2 392	(e) 1 822
Services trade balance	-216	-420	1 357	(e) 326

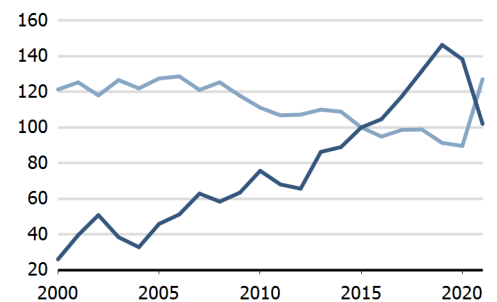
Services exports by main category²

(as % of total services)

	2005	2010	2015	2021
Transport	42.2	40.1	9.5	(e) 10.6
Travel	23.8	19.5	56.6	(e) 0.8
Other services	25.3	24.7	26.2	(e) 32.4

TRADE INDICES

- Terms of trade index
- Purchasing power index of exports



ECONOMIC TRENDS

Economic indicators

(millions of US\$ unless otherwise specified)

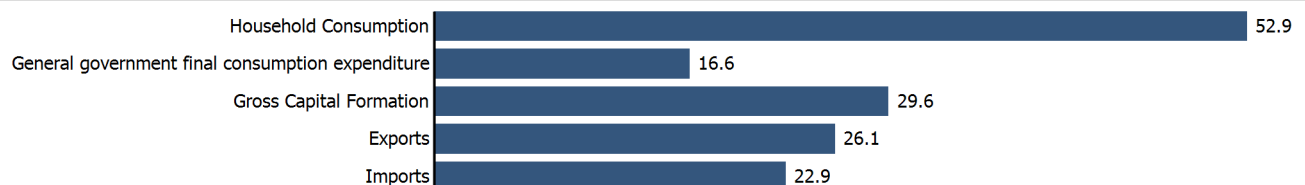
	2005	2010	2015	2021
GDP, current	14 148	44 847	63 835	49 255
GDP per capita, current US\$	296	908	1 240	916
Real GDP growth, y-on-y, %	13.31	7.76	6.41	-21.50
Current account balance, % of GDP	4.11	3.51	-4.87	(e) -4.74
Exchange rate (/US\$)	1 029.833	959.750	1 162.615	1 616.360

-21.5 %

Gross domestic product
growth rate in 2021

GDP by expenditure in 2020

(as % of total GDP)



MYANMAR

FDI AND EXTERNAL FINANCIAL RESOURCES

Financial flows

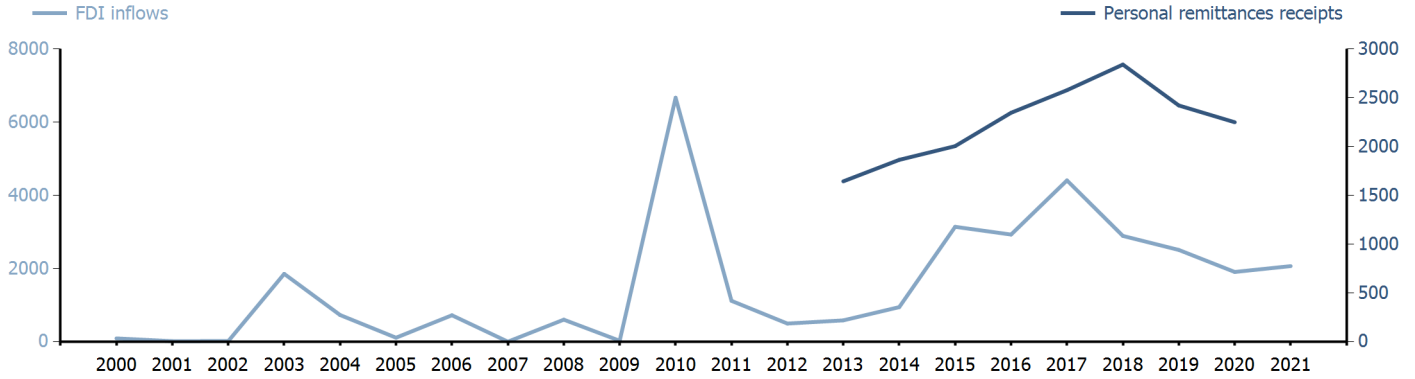
(millions of US\$ unless otherwise specified)

	2005	2010	2015	2021
FDI inflows	110.35	6 669.40	3 141.38	2 066.61
FDI outflows
Personal remittances, % of GDP	3.14	..

FDI outflows as % of GDP in 2021

Financial flows trends

(millions of US\$)



TRADE IN GOODS AND SERVICES

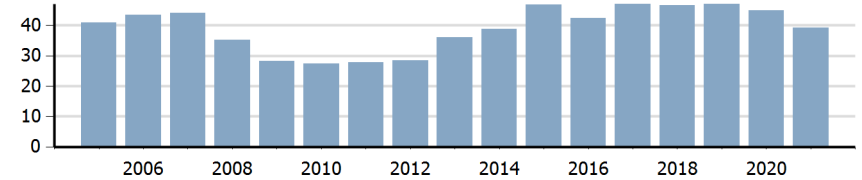
Trade balance indicators²

(as % and index)

	2005	2010	2015	2021
Balance, % of GDP	12.49	6.70	-3.85	(e) 3.34
Balance, % of imports	87.71	64.69	-15.21	(e) 18.62
Normalized balance	0.305	0.244	-0.082	(e) 0.085

Trade openness²

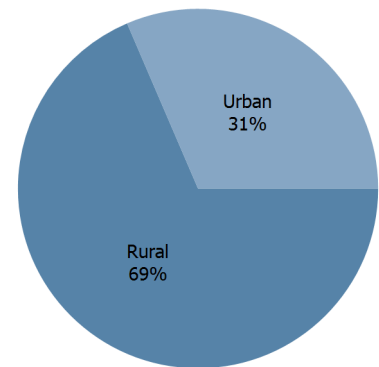
(sum of imports and exports as % of GDP)



LIVING AREA

Population by living area in 2021

(% of population)



OTHER INDICATORS

Maritime transport indicators

	2005	2010	2015	2021
Merchant fleet, national flag (thousands of DWT)	656	210	303	200
Liner shipping connectivity index (maximum 2006 = 100 for China)	..	4.84	8.15	8.91
Container port throughput (TEU)	..	335 346	827 249	..

0.009 %

Share of the total world merchant fleet in 2021

Information economy indicators

(as % of)

	2005	2010	2015	2021
Share of ICT goods, % of total exports	..	0.02	0.04	0.58
Share of ICT goods, % of total imports	..	1.43	3.46	2.44
Share of workforce involved in the ICT sector

MYANMAR

Source: UNCTADstat (<http://unctadstat.unctad.org>)

Notes:

- 1 Land area refers to the total area of a country excluding area under inland water bodies. It differs from the country area, that includes area under inland water bodies, but excludes offshore territorial waters.
- 2 Statistics presented correspond to the 6th edition of the IMF Balance of Payments and International Investment Position Manual (BPM6, 2009).
- e Estimated.
- q Estimated. Data refers to 2020.

Symbols for missing values:

- 0 Zero means that the amount is nil or negligible
- .. Not available or not separately reported
- Not applicable
- ... Not available, including no quotation
- # Non-relevant calculation
- Not publishable
- *** Negative accumulation of flows; Value included in regional and global totals

Abbreviations & acronyms:

- DWT: Dead weight tons
- FDI: Foreign direct investment
- GDP: Gross domestic product
- ICT: Information and communication technology
- TEU: Twenty foot equivalent unit
- US\$: United States dollar

Disclaimer:

The designations employed and the presentation of the material on UNCTADstat do not imply the expression of any opinion whatsoever on the part of the secretariat of the United Nations concerning the legal status of any country, territory, city or area, or of its authorities, or concerning the delimitation of its frontiers or boundaries.

Where the designations "economy" or "country or area" appear in texts or tables, they cover regions, countries, territories, cities or areas.

UNCTAD strives for the highest level of accuracy and is committed to promptly correcting any errors on its part. It does not guarantee or make any express or implied representations regarding the accuracy, reliability, correctness, fitness for use for a particular purpose, or otherwise, whatsoever, of any of the tables in UNCTADstat.

Generation date: 20 October 2022