

GENERAL PROFILE: ANTIGUA AND BARBUDA

GENERAL INFORMATION FOR 2021

Population
0.093 Millions

Exchange rate
2.700 XCD/US\$

GDP
1 428 Millions current US\$

Land area¹
(q) 440 km²

CPI growth
1.63 %

GDP growth
2.54 %

INTERNATIONAL MERCHANDISE TRADE

Total merchandise trade

(millions of US\$)

	2005	2010	2015	2021
Merchandise exports	83	46	66	19
Merchandise imports	506	501	449	596
Merchandise trade balance	-423	-456	-382	-576

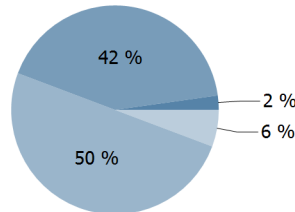
-13.8 %

Merchandise exports growth rate in 2021

Export structure by product group in 2021

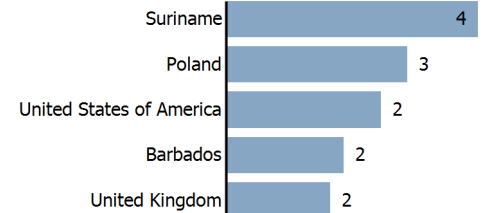
(as % of total exports)

- All food items
- Fuels
- Manufactured goods
- Other



Top 5 partners in 2021

(exports, millions of US\$)



INTERNATIONAL TRADE IN SERVICES

Total trade in services²

(millions of US\$)

	2005	2010	2015	2021
Services exports	463	478	949	713
Services imports	227	225	427	337
Services trade balance	235	253	522	376

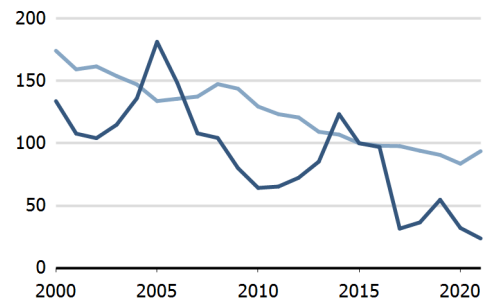
Services exports by main category²

(as % of total services)

	2005	2010	2015	2021
Transport	18.3	25.0	13.9	6.3
Travel	66.9	62.3	74.8	76.6
Other services	14.8	12.7	11.1	17.1

TRADE INDICES

- Terms of trade index
- Purchasing power index of exports



ECONOMIC TRENDS

Economic indicators

(millions of US\$ unless otherwise specified)

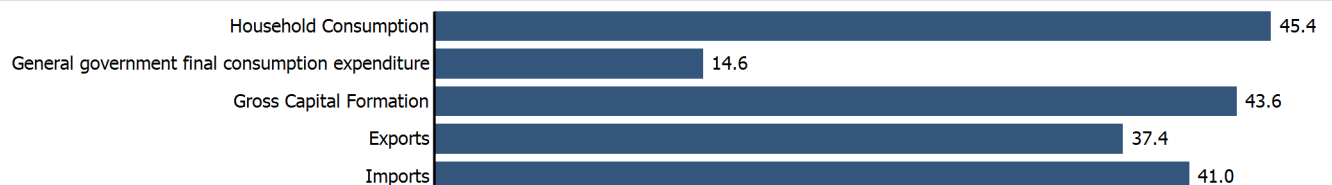
	2005	2010	2015	2021
GDP, current	1 015	1 149	1 337	1 428
GDP per capita, current US\$	12 708	13 405	14 862	15 318
Real GDP growth, y-on-y, %	7.92	-7.84	3.83	2.54
Current account balance, % of GDP	-16.90	-14.55	2.21	-15.47
Exchange rate (/US\$)	2.700	2.700	2.700	2.700

+2.5 %

Gross domestic product growth rate in 2021

GDP by expenditure in 2020

(as % of total GDP)



ANTIGUA AND BARBUDA

FDI AND EXTERNAL FINANCIAL RESOURCES

Financial flows

(millions of US\$ unless otherwise specified)

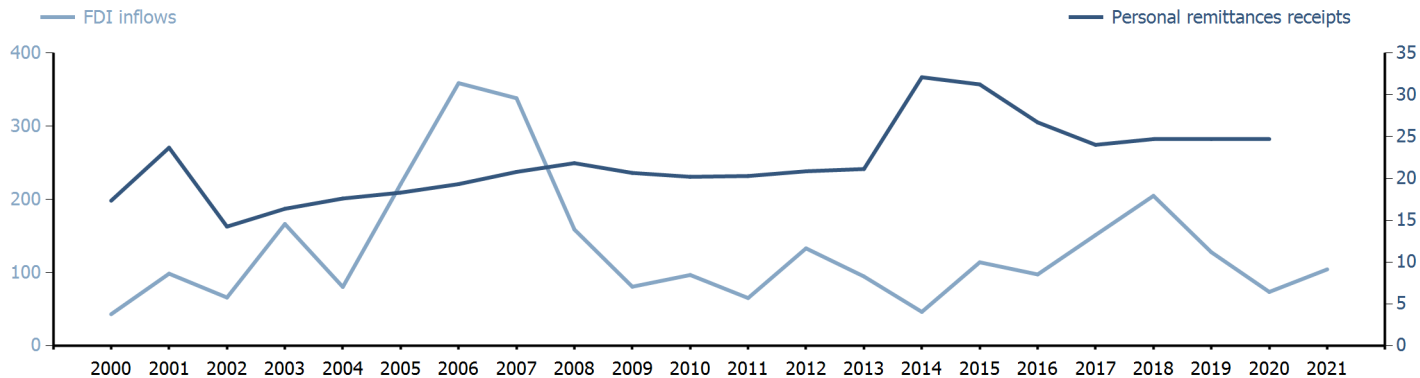
	2005	2010	2015	2021
FDI inflows	220.96	96.68	(j) 114.02	(j) 104.33
FDI outflows	(j) 14.08	(j) -8.77
Personal remittances, % of GDP	1.79	1.76	2.34	..

-0.6 %

FDI outflows as % of GDP in 2021

Financial flows trends

(millions of US\$)



TRADE IN GOODS AND SERVICES

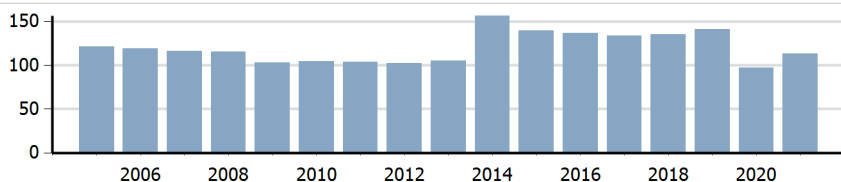
Trade balance indicators²

(as % and index)

	2005	2010	2015	2021
Balance, % of GDP	-13.54	-13.50	12.19	-8.36
Balance, % of imports	-20.13	-22.84	19.10	-13.73
Normalized balance	-0.112	-0.129	0.087	-0.074

Trade openness²

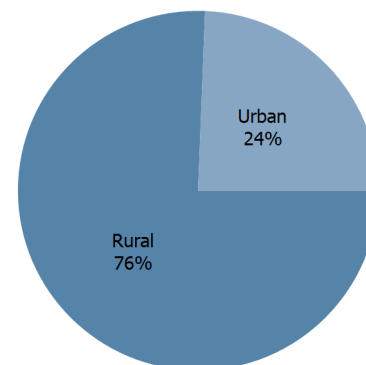
(sum of imports and exports as % of GDP)



LIVING AREA

Population by living area in 2021

(% of population)



OTHER INDICATORS

Maritime transport indicators

	2005	2010	2015	2021
Merchant fleet, national flag (thousands of DWT)	9 093	13 034	12 359	6 396
Liner shipping connectivity index (maximum 2006 = 100 for China)	..	5.43	5.87	5.02
Container port throughput (TEU)	..	-	-	..

0.299 %

Share of the total world merchant fleet in 2021

Information economy indicators

(as % of)

	2005	2010	2015	2021
Share of ICT goods, % of total exports	4.63	2.16	11.78	..
Share of ICT goods, % of total imports	3.91	3.05	3.63	..
Share of workforce involved in the ICT sector

ANTIGUA AND BARBUDA

Source: UNCTADstat (<http://unctadstat.unctad.org>)

Notes:

- 1 Land area refers to the total area of a country excluding area under inland water bodies. It differs from the country area, that includes area under inland water bodies, but excludes offshore territorial waters.
- 2 Statistics presented correspond to the 6th edition of the IMF Balance of Payments and International Investment Position Manual (BPM6, 2009).
- j Asset/liability basis.
- q Estimated. Data refers to 2020.

Symbols for missing values:

- 0 Zero means that the amount is nil or negligible
- .. Not available or not separately reported
- Not applicable
- ... Not available, including no quotation
- # Non-relevant calculation
- Not publishable
- *** Negative accumulation of flows; Value included in regional and global totals

Abbreviations & acronyms:

- DWT: Dead weight tons
- FDI: Foreign direct investment
- GDP: Gross domestic product
- ICT: Information and communication technology
- TEU: Twenty foot equivalent unit
- US\$: United States dollar

Disclaimer:

The designations employed and the presentation of the material on UNCTADstat do not imply the expression of any opinion whatsoever on the part of the secretariat of the United Nations concerning the legal status of any country, territory, city or area, or of its authorities, or concerning the delimitation of its frontiers or boundaries.

Where the designations "economy" or "country or area" appear in texts or tables, they cover regions, countries, territories, cities or areas.

UNCTAD strives for the highest level of accuracy and is committed to promptly correcting any errors on its part. It does not guarantee or make any express or implied representations regarding the accuracy, reliability, correctness, fitness for use for a particular purpose, or otherwise, whatsoever, of any of the tables in UNCTADstat.

Generation date: 20 October 2022