

## GENERAL PROFILE: UNITED ARAB EMIRATES

### GENERAL INFORMATION FOR 2021

**Population**  
9.365 Millions

**Exchange rate**  
3.673 AED/US\$

**GDP**  
418 279 Millions current US\$

**Land area<sup>1</sup>**  
(q) 71 020 km<sup>2</sup>

**CPI growth**  
0.19 %

**GDP growth**  
4.34 %

### INTERNATIONAL MERCHANDISE TRADE

#### Total merchandise trade

(millions of US\$)

	2005	2010	2015	2021
Merchandise exports	117 287	(e) 214 000	300 477	425 160
Merchandise imports	84 654	(e) 165 000	263 417	347 529
Merchandise trade balance	32 633	(e) 49 000	37 059	77 631

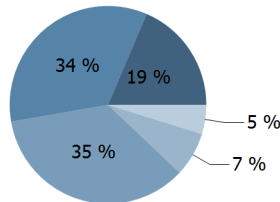
**+26.8 %**

Merchandise exports  
growth rate in 2021

#### Export structure by product group in 2021

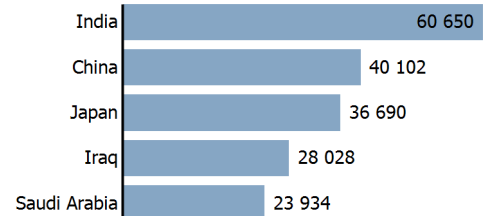
(as % of total exports)

- All food items
- Ores and metals
- Fuels
- Manufactured goods
- Other



#### Top 5 partners in 2021

(exports, millions of US\$)



### INTERNATIONAL TRADE IN SERVICES

#### Total trade in services<sup>2</sup>

(millions of US\$)

	2005	2010	2015	2021
Services exports	4 784	11 736	60 776	101 838
Services imports	19 367	42 100	81 879	76 106
Services trade balance	-14 584	-30 364	-21 103	25 732

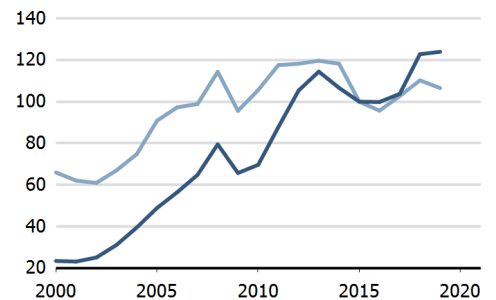
#### Services exports by main category<sup>2</sup>

(as % of total services)

	2005	2010	2015	2021
Transport	22.1	20.9	38.5	24.3
Travel	67.3	73.1	28.8	33.8
Other services	10.6	6.0	32.7	41.9

### TRADE INDICES

- Terms of trade index
- Purchasing power index of exports



### ECONOMIC TRENDS

#### Economic indicators

(millions of US\$ unless otherwise specified)

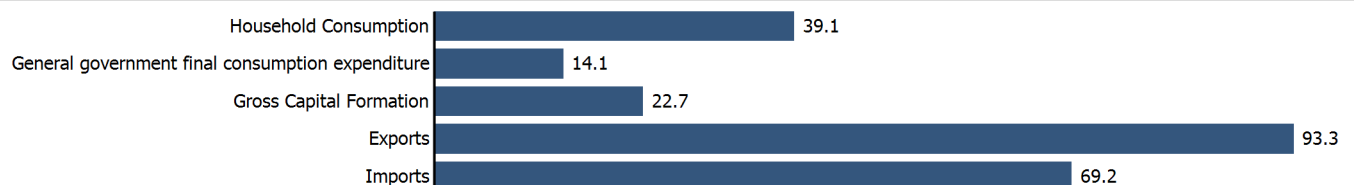
	2005	2010	2015	2021
GDP, current	182 978	289 787	358 135	418 279
GDP per capita, current US\$	42 742	34 166	40 164	44 663
Real GDP growth, y-on-y, %	4.86	1.64	5.06	4.34
Current account balance, % of GDP	(e) 13.00	(e) 4.21	(e) 4.90	(e) 11.46
Exchange rate (/US\$)	3.673	3.673	3.673	3.673

**+4.3 %**

Gross domestic product  
growth rate in 2021

#### GDP by expenditure in 2020

(as % of total GDP)



# UNITED ARAB EMIRATES

## FDI AND EXTERNAL FINANCIAL RESOURCES

### Financial flows

(millions of US\$ unless otherwise specified)

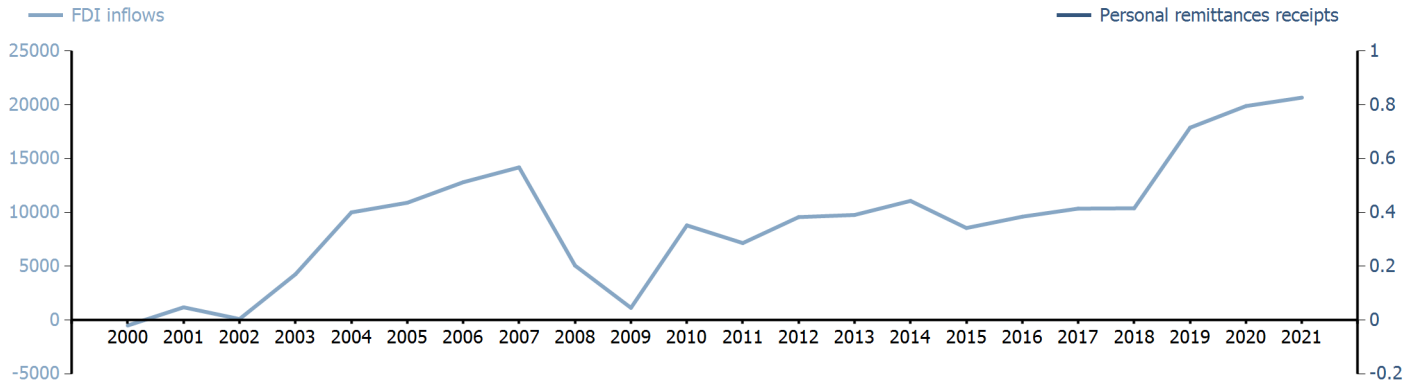
	2005	2010	2015	2021
FDI inflows	10 899.93	8 796.77	8 550.90	20 667.12
FDI outflows	3 750.30	2 015.00	16 691.60	22 545.95
Personal remittances, % of GDP	..	..	..	..

**+5.4 %**

FDI outflows as % of GDP in 2021

### Financial flows trends

(millions of US\$)



## TRADE IN GOODS AND SERVICES

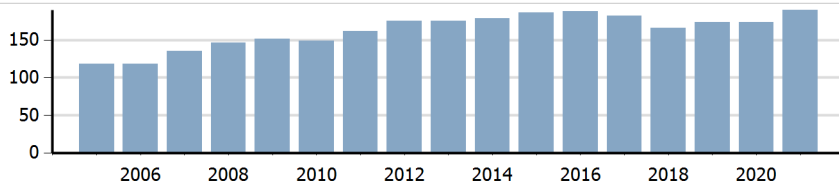
### Trade balance indicators<sup>2</sup>

(as % and index)

	2005	2010	2015	2021
Balance, % of GDP	15.42	6.42	15.49	(e) 26.61
Balance, % of imports	30.05	9.01	18.14	(e) 32.58
Normalized balance	0.131	0.043	0.083	(e) 0.140

### Trade openness<sup>2</sup>

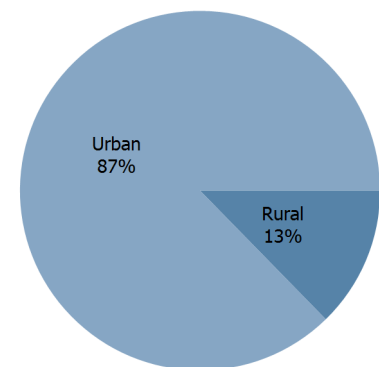
(sum of imports and exports as % of GDP)



## LIVING AREA

### Population by living area in 2021

(% of population)



## OTHER INDICATORS

### Maritime transport indicators

	2005	2010	2015	2021
Merchant fleet, national flag (thousands of DWT)	986	1 412	1 000	746
Liner shipping connectivity index (maximum 2006 = 100 for China)	..	62.23	63.50	76.62
Container port throughput (TEU)	..	15 177 436	21 233 200	..

**0.035 %**

Share of the total world merchant fleet in 2021

### Information economy indicators

(as % of)

	2005	2010	2015	2021
Share of ICT goods, % of total exports	4.30	..	2.51	..
Share of ICT goods, % of total imports	8.08	..	4.90	..
Share of workforce involved in the ICT sector	..	..	..	..

# UNITED ARAB EMIRATES

Source: UNCTADstat (<http://unctadstat.unctad.org>)

## Notes:

- 1 Land area refers to the total area of a country excluding area under inland water bodies. It differs from the country area, that includes area under inland water bodies, but excludes offshore territorial waters.
- 2 Statistics presented correspond to the 6th edition of the IMF Balance of Payments and International Investment Position Manual (BPM6, 2009).
- e Estimated.
- q Estimated. Data refers to 2020.

## Symbols for missing values:

- 0 Zero means that the amount is nil or negligible
- .. Not available or not separately reported
- Not applicable
- ... Not available, including no quotation
- # Non-relevant calculation
- Not publishable
- \*\*\* Negative accumulation of flows; Value included in regional and global totals

## Abbreviations & acronyms:

- DWT: Dead weight tons
- FDI: Foreign direct investment
- GDP: Gross domestic product
- ICT: Information and communication technology
- TEU: Twenty foot equivalent unit
- US\$: United States dollar

## Disclaimer:

The designations employed and the presentation of the material on UNCTADstat do not imply the expression of any opinion whatsoever on the part of the secretariat of the United Nations concerning the legal status of any country, territory, city or area, or of its authorities, or concerning the delimitation of its frontiers or boundaries.

Where the designations "economy" or "country or area" appear in texts or tables, they cover regions, countries, territories, cities or areas.

UNCTAD strives for the highest level of accuracy and is committed to promptly correcting any errors on its part. It does not guarantee or make any express or implied representations regarding the accuracy, reliability, correctness, fitness for use for a particular purpose, or otherwise, whatsoever, of any of the tables in UNCTADstat.

Generation date: 20 October 2022