

## GENERAL PROFILE: SPAIN

### GENERAL INFORMATION FOR 2021

**Population**  
47.487 Millions

**Exchange rate**  
0.845 EUR/US\$

**GDP**  
1 416 075 Millions current US\$

**Land area<sup>1</sup>**  
(q) 499 557 km<sup>2</sup>

**CPI growth**  
3.09 %

**GDP growth**  
4.45 %

### INTERNATIONAL MERCHANDISE TRADE

#### Total merchandise trade

(millions of US\$)

	2005	2010	2015	2021
Merchandise exports	192 644	254 418	282 274	382 993
Merchandise imports	288 786	327 016	311 851	418 176
Merchandise trade balance	-96 141	-72 598	-29 578	-35 184

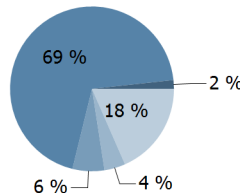
**+24.2 %**

Merchandise exports growth rate in 2021

#### Export structure by product group in 2021

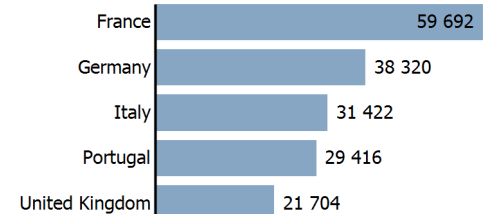
(as % of total exports)

- All food items
- Ores and metals
- Fuels
- Manufactured goods
- Other



#### Top 5 partners in 2021

(exports, millions of US\$)



### INTERNATIONAL TRADE IN SERVICES

#### Total trade in services<sup>2</sup>

(millions of US\$)

	2005	2010	2015	2021
Services exports	92 857	114 502	121 511	119 046
Services imports	59 789	65 492	62 218	73 053
Services trade balance	33 067	49 010	59 292	45 993

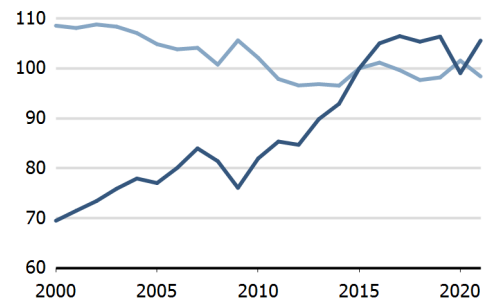
#### Services exports by main category<sup>2</sup>

(as % of total services)

	2005	2010	2015	2021
Transport	-	-	11.5	15.0
Travel	56.0	51.4	51.4	29.0
Other services	-	(e) 37.0	37.1	56.0

### TRADE INDICES

- Terms of trade index
- Purchasing power index of exports



### ECONOMIC TRENDS

#### Economic indicators

(millions of US\$ unless otherwise specified)

	2005	2010	2015	2021
GDP, current	1 153 257	1 420 722	1 195 119	1 416 075
GDP per capita, current US\$	26 399	30 505	25 739	29 820
Real GDP growth, y-on-y, %	3.65	0.16	3.84	4.45
Current account balance, % of GDP	-7.28	-3.68	2.02	0.94
Exchange rate (/US\$)	0.804	0.754	0.901	0.845

**+4.4 %**

Gross domestic product growth rate in 2021

#### GDP by expenditure in 2020

(as % of total GDP)



# SPAIN

## FDI AND EXTERNAL FINANCIAL RESOURCES

### Financial flows

(millions of US\$ unless otherwise specified)

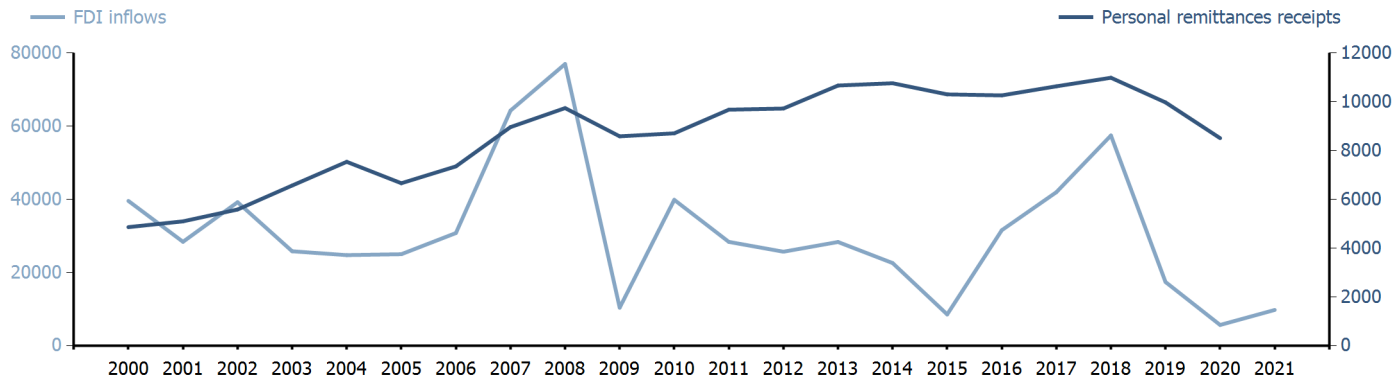
	2005	2010	2015	2021
FDI inflows	25 020.18	39 872.51	8 558.75	9 777.24
FDI outflows	41 829.47	37 843.80	41 926.11	-1 625.37
Personal remittances, % of GDP	0.58	0.61	0.86	..

**-0.1 %**

FDI outflows as % of GDP in 2021

### Financial flows trends

(millions of US\$)



## TRADE IN GOODS AND SERVICES

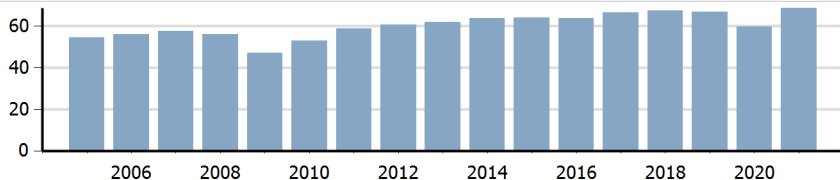
### Trade balance indicators<sup>2</sup>

(as % and index)

	2005	2010	2015	2021
Balance, % of GDP	-4.81	-1.02	3.04	1.52
Balance, % of imports	-16.16	-3.79	9.94	4.52
Normalized balance	-0.088	-0.019	0.047	0.022

### Trade openness<sup>2</sup>

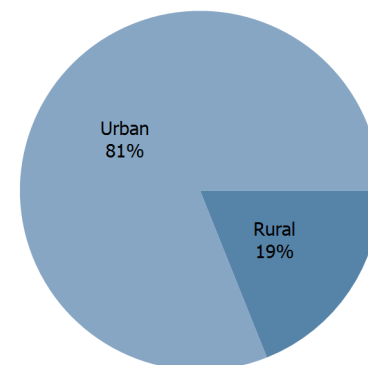
(sum of imports and exports as % of GDP)



## LIVING AREA

### Population by living area in 2021

(% of population)



## OTHER INDICATORS

### Maritime transport indicators

	2005	2010	2015	2021
Merchant fleet, national flag (thousands of DWT)	2 655	2 555	1 857	1 915
Liner shipping connectivity index (maximum 2006 = 100 for China)	..	73.84	79.66	90.01
Container port throughput (TEU)	..	12 549 202	14 245 394	..

**0.090 %**

Share of the total world merchant fleet in 2021

### Information economy indicators

(as % of)

	2005	2010	2015	2021
Share of ICT goods, % of total exports	3.73	2.20	1.25	1.59
Share of ICT goods, % of total imports	7.23	6.62	5.05	5.28
Share of workforce involved in the ICT sector	..	(r) 3.94	..	..

# SPAIN

Source: UNCTADstat (<http://unctadstat.unctad.org>)

## Notes:

- 1 Land area refers to the total area of a country excluding area under inland water bodies. It differs from the country area, that includes area under inland water bodies, but excludes offshore territorial waters.
- 2 Statistics presented correspond to the 6th edition of the IMF Balance of Payments and International Investment Position Manual (BPM6, 2009).
- e Estimated.
- q Estimated. Data refers to 2020.
- r Number of persons employed in full time equivalent units. Total business economy includes repair of computers, personal and household goods; except financial and insurance activities.

## Symbols for missing values:

- 0 Zero means that the amount is nil or negligible
- .. Not available or not separately reported
- Not applicable
- ... Not available, including no quotation
- # Non-relevant calculation
- Not publishable
- \*\*\* Negative accumulation of flows; Value included in regional and global totals

## Abbreviations & acronyms:

- DWT: Dead weight tons
- FDI: Foreign direct investment
- GDP: Gross domestic product
- ICT: Information and communication technology
- TEU: Twenty foot equivalent unit
- US\$: United States dollar

## Disclaimer:

The designations employed and the presentation of the material on UNCTADstat do not imply the expression of any opinion whatsoever on the part of the secretariat of the United Nations concerning the legal status of any country, territory, city or area, or of its authorities, or concerning the delimitation of its frontiers or boundaries.

Where the designations "economy" or "country or area" appear in texts or tables, they cover regions, countries, territories, cities or areas.

UNCTAD strives for the highest level of accuracy and is committed to promptly correcting any errors on its part. It does not guarantee or make any express or implied representations regarding the accuracy, reliability, correctness, fitness for use for a particular purpose, or otherwise, whatsoever, of any of the tables in UNCTADstat.

Generation date: 20 October 2022