

GENERAL PROFILE: HONDURAS

GENERAL INFORMATION FOR 2020

Population
9.905 Millions

Exchange rate
24.582 HNL/US\$

GDP
23 738 Millions current US\$

Land area¹
(n) 111 890 km²

CPI growth
3.47 %

GDP growth
-9.00 %

INTERNATIONAL MERCHANDISE TRADE

Total merchandise trade

(millions of US\$)

	2005	2010	2015	2020
Merchandise exports	5 048	6 264	8 226	7 683
Merchandise imports	6 545	8 907	11 175	10 241
Merchandise trade balance	-1 497	-2 643	-2 949	-2 558

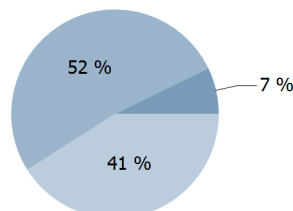
-12.6 %

Merchandise exports growth rate in 2020

Export structure by product group in 2020

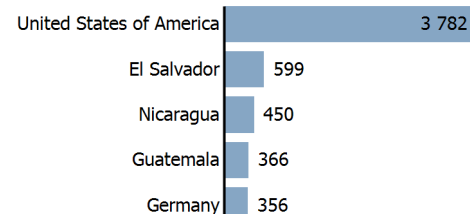
(as % of total exports)

- All food items
- Manufactured goods
- Other



Top 5 partners in 2020

(exports, millions of US\$)



INTERNATIONAL TRADE IN SERVICES

Total trade in services²

(millions of US\$)

	2005	2010	2015	2020
Services exports	1 774	2 108	2 940	1 994
Services imports	929	1 169	1 666	1 847
Services trade balance	844	938	1 274	147

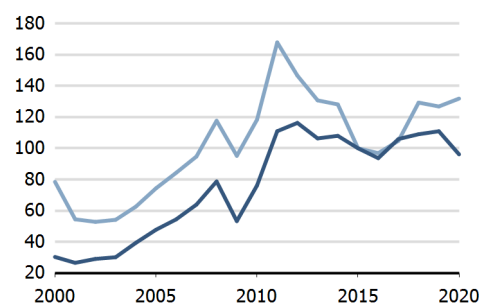
Services exports by main category²

(as % of total services)

	2005	2010	2015	2020
Transport	2.8	2.8	4.3	4.8
Travel	26.1	29.7	22.6	9.4
Other services	10.5	13.9	14.3	22.0

TRADE INDICES

- Terms of trade index
- Purchasing power index of exports



ECONOMIC TRENDS

Economic indicators

(millions of US\$ unless otherwise specified)

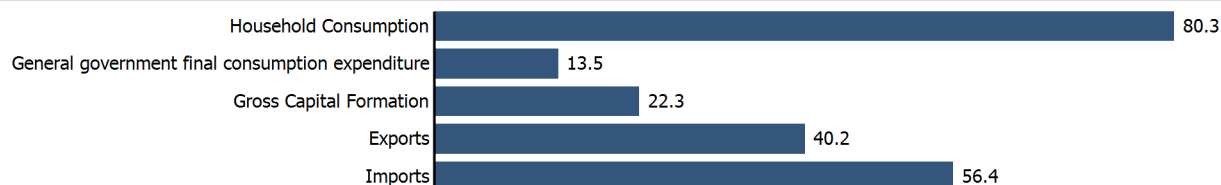
	2005	2010	2015	2020
GDP, current	9 757	15 839	20 980	23 738
GDP per capita, current US\$	1 308	1 904	2 302	2 397
Real GDP growth, y-on-y, %	6.05	3.73	3.84	-9.00
Current account balance, % of GDP	-3.12	-5.08	-4.67	2.95
Exchange rate (/US\$)	18.832	18.895	21.945	24.582

-9.0 %

Gross domestic product growth rate in 2020

GDP by expenditure in 2019

(as % of total GDP)



HONDURAS

FDI AND EXTERNAL FINANCIAL RESOURCES

Financial flows

(millions of US\$ unless otherwise specified)

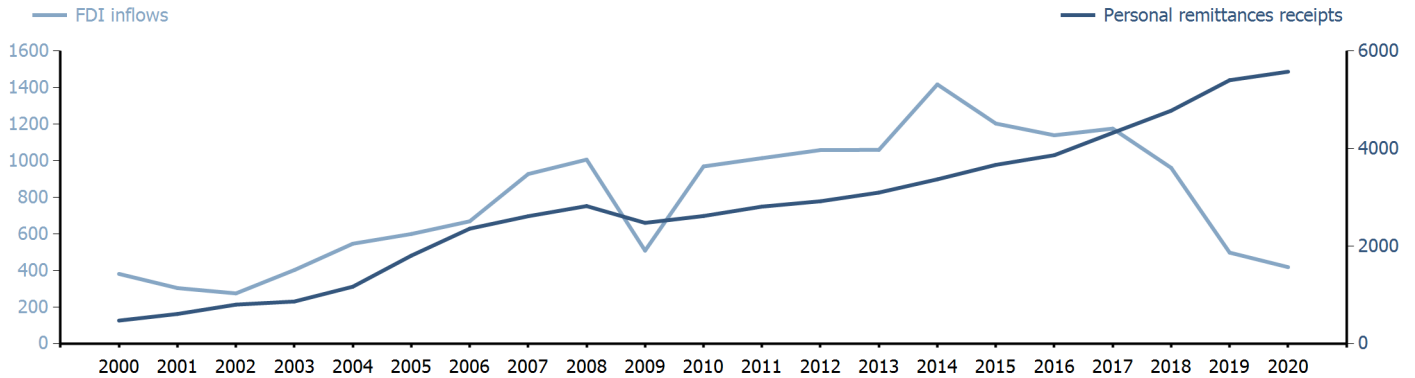
	2005	2010	2015	2020
FDI inflows	599.76	969.10	1 203.50	418.60
FDI outflows	1.00	-1.40	251.90	46.70
Personal remittances, % of GDP	18.50	16.53	17.47	23.49

+0.2 %

FDI outflows as % of GDP in 2020

Financial flows trends

(millions of US\$)



TRADE IN GOODS AND SERVICES

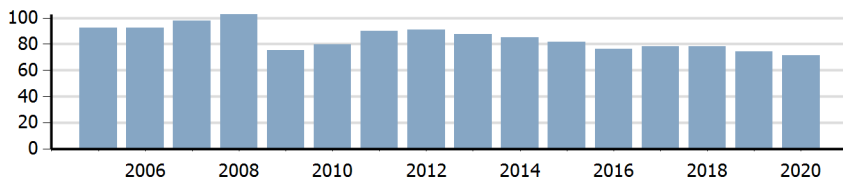
Trade balance indicators²

(as % and index)

	2005	2010	2015	2020
Balance, % of GDP	-18.34	-18.43	-16.64	-19.66
Balance, % of imports	-33.14	-37.55	-33.81	-43.20
Normalized balance	-0.199	-0.231	-0.203	-0.275

Trade openness²

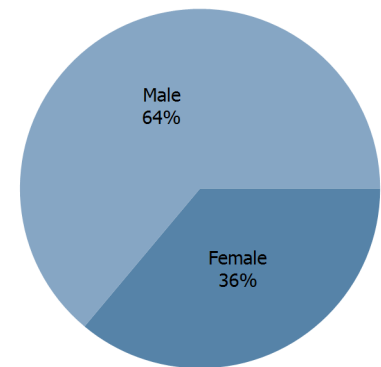
(sum of imports and exports as % of GDP)



LABOUR FORCE

Labour force by gender in 2020

(as % of total labour force, all sectors)



OTHER INDICATORS

Maritime transport indicators

	2005	2010	2015	2020
Merchant fleet, national flag (thousands of DWT)	972	702	512	751
Liner shipping connectivity index (maximum 2006 = 100 for China)	..	13.94	13.62	11.21
Container port throughput (TEU)	..	619 867	743 686	785 056

0.036 %

Share of the total world merchant fleet in 2020

Information economy indicators

(as % of)

	2005	2010	2015	2020
Share of ICT goods, % of total exports	1.10	0.15	0.17	..
Share of ICT goods, % of total imports	5.58	5.87	8.36	..
Share of workforce involved in the ICT sector

HONDURAS

Source: UNCTADstat (<http://unctadstat.unctad.org>)

Notes:

- 1 Land area refers to the total area of a country excluding area under inland water bodies. It differs from the country area, that includes area under inland water bodies, but excludes offshore territorial waters.
- 2 Statistics presented correspond to the 6th edition of the IMF Balance of Payments and International Investment Position Manual (BPM6, 2009).
- n Estimated. Data refers to 2016.

Symbols for missing values:

- 0 Zero means that the amount is nil or negligible
- .. Not available or not separately reported
- Not applicable
- ... Not available, including no quotation
- # Non-relevant calculation
- Not publishable
- *** Negative accumulation of flows; Value included in regional and global totals

Abbreviations & acronyms:

- DWT: Dead weight tons
- FDI: Foreign direct investment
- GDP: Gross domestic product
- ICT: Information and communication technology
- TEU: Twenty foot equivalent unit
- US\$: United States dollar

Disclaimer:

The designations employed and the presentation of the material on UNCTADstat do not imply the expression of any opinion whatsoever on the part of the secretariat of the United Nations concerning the legal status of any country, territory, city or area, or of its authorities, or concerning the delimitation of its frontiers or boundaries.

Where the designations "economy" or "country or area" appear in texts or tables, they cover regions, countries, territories, cities or areas.

UNCTAD strives for the highest level of accuracy and is committed to promptly correcting any errors on its part. It does not guarantee or make any express or implied representations regarding the accuracy, reliability, correctness, fitness for use for a particular purpose, or otherwise, whatsoever, of any of the tables in UNCTADstat.

Generation date: 05 January 2022