

MARITIME PROFILE: UNITED KINGDOM

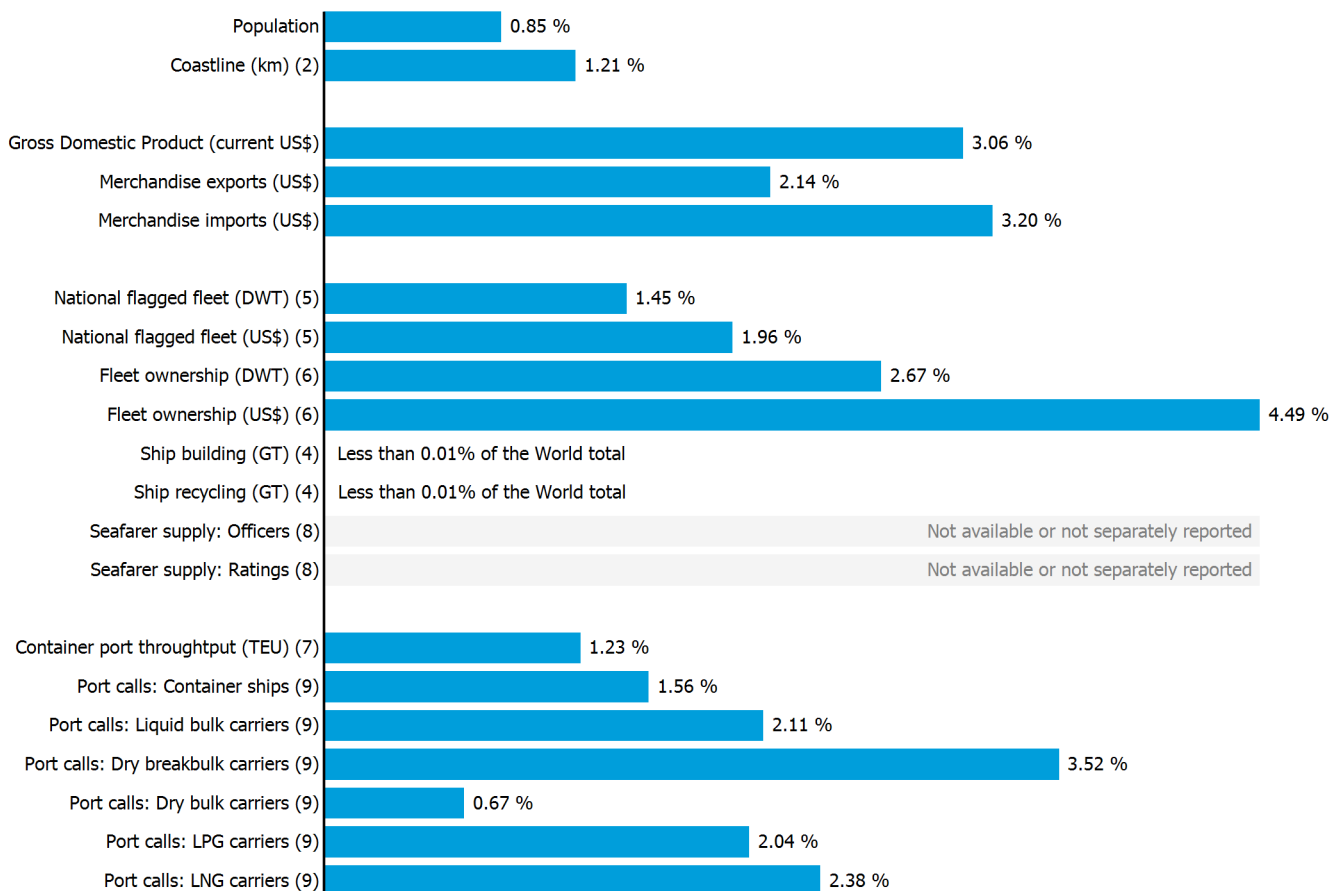
GENERAL INFORMATION FOR 2022



MARITIME KEY FIGURES FOR 2022



WORLD SHARES FOR 2022



UNITED KINGDOM

INTERNATIONAL MERCHANDISE TRADE

Total merchandise trade

(millions of US\$)

	2005	2010	2015	2022
Merchandise exports	384 477	415 959	465 850	532 982
Merchandise imports	513 673	591 095	630 003	823 547
Merchandise trade balance	-129 196	-175 136	-164 153	-290 565

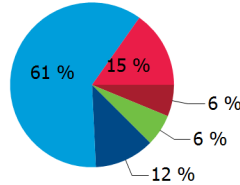
+13.3 %

Merchandise exports growth rate in 2022

Export structure by product group in 2022

(as % of total exports)

- All food items
- Ores and metals
- Fuels
- Manufactured goods
- Other



Top 5 partners in 2022

(exports, millions of US\$)

United States of America	64 422
Netherlands (Kingdom of the)	44 143
Germany	41 222
China	35 557
Switzerland, Liechtenstein	35 092

INTERNATIONAL TRADE IN TRANSPORT SERVICES

Services exports by main category¹⁰

(as % of total services)

	2005	2010	2015	2022
Transport	13.2	9.9	9.5	6.6
Travel	13.5	12.7	14.5	13.8
Other services	72.4	75.9	74.0	77.6

+27.0 %

Transport services exports growth rate in 2022

Total trade in transport services¹⁰

(millions of US\$)

	2005	2010	2015	2022
Transport services exports	33 542	29 846	36 421	32 601
Transport services imports	29 040	26 371	33 186	34 562
Transport services trade balance	4 502	3 475	3 234	-1 961

NATIONAL FLEET

Carrying capacity by type of ship⁵

(Thousands DWT)

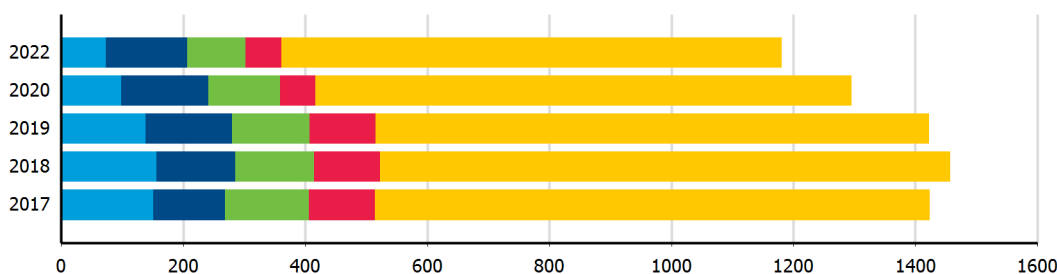
	2005	2010	2015	2022
Total fleet	23 161.0	36 887.2	38 897.3	31 960.0
Oil tankers	8 482.0	12 863.6	11 026.1	3 975.9
Bulk carriers	4 645.0	6 981.0	13 017.7	17 604.9
General cargo	1 509.0	2 725.5	1 027.7	546.3
Container ships	5 781.0	10 345.8	8 808.5	4 654.0
Other types of ships	2 744.0	3 971.3	5 017.3	5 178.9

-5.3 %

Fleet growth rate in 2022

Fleet by type of ship⁵

(Number of ships)



- Oil tankers
- Bulk carriers
- General cargo
- Container ships
- Other types of ships

UNITED KINGDOM

LINER SHIPPING CONNECTIVITY

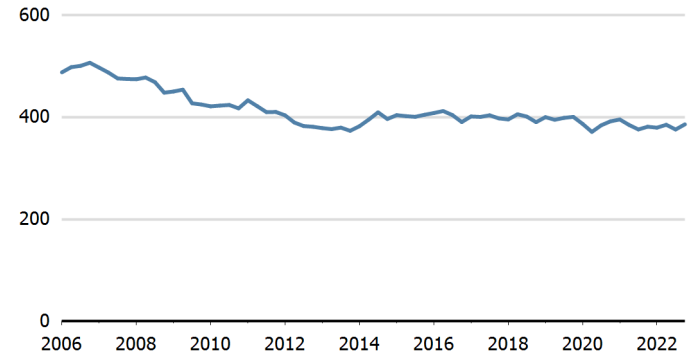
Bilateral connectivity index - Top 10 partners in Q1 2022¹¹

Can only take values between 0 (minimum) and 1 (maximum)

No data available

Liner shipping connectivity index¹¹

Average Q1 2023=100



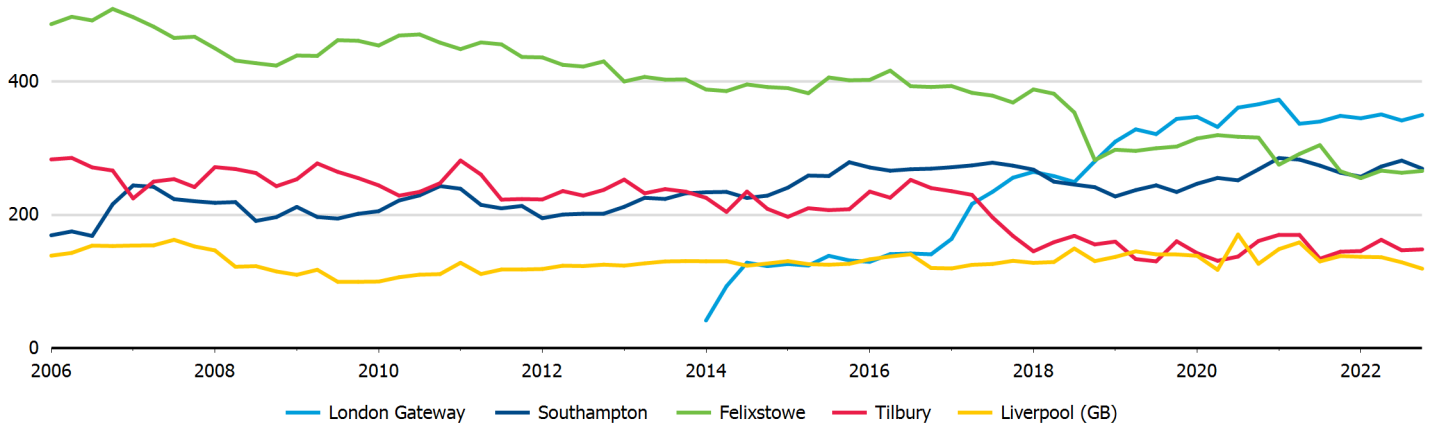
PORT CALLS AND PERFORMANCE

Port calls, time spent in ports, vessel age and size in 2022⁹

	Number of arrivals	Median time in port (days)	Avg age of vessels	Avg size (GT) of vessels	Avg cargo carrying capacity (DWT) per vessel	Avg container carrying capacity (TEU) per container ship	Maximum size (GT) of vessels
All ships	182 312	1.18	19	14 137	13 053	3 252	236 228
Liquid bulk carriers	11 322	1.07	15	13 158	21 900	..	166 178
Liquefied petroleum gas carriers	1 208	1.10	11	6 902	7 485	..	59 226
Liquefied natural gas carriers	342	1.22	8	97 353	78 702	..	168 189
Dry bulk carriers	1 886	2.82	14	26 076	44 653	..	107 879
Dry breakbulk carriers	15 521	1.53	20	3 585	4 971	..	72 275
Roll-on/ roll-off ships	15 751	..	15	24 096	9 733	..	100 430
Container ships	6 831	0.82	17	35 218	..	3 252	236 228
Passenger ships	129 451	..	20	12 799	204 400

Port liner shipping connectivity index - Top 5 ports in 2022¹¹

Average Q1 2023=100



UNITED KINGDOM

Source: Detailed data sources are available in the documentation of the corresponding tables in the Data Center (<https://unctadstat.unctad.org/datacentre/>). A link to these tables is provided in each section of the profile.

Notes:

- 1 Sum of exports and imports.
- 2 Land area refers to the total area of a country excluding area under inland water bodies. It differs from the country area, that includes area under inland water bodies, but excludes offshore territorial waters.
Coastline length based on data calculated in 2000 from the World Vector Shoreline database at 1:250,000 scale.
- 3 Sum of exports and imports. Statistics presented correspond to the 6th edition of the IMF Balance of Payments and International Investment Position Manual, 2009 (BPM6, 2009).
- 4 Propelled seagoing merchant vessels of 100 GT and above. Source: Clarksons Research (<https://www.clarksons.com/services/research/>).
- 5 Propelled seagoing merchant vessels of 100 GT and above, on 1 January. Source: Clarksons Research (<https://www.clarksons.com/services/research/>).
- 6 Propelled seagoing merchant vessels of 1000 GT and above, on 1 January. Source: Clarksons Research (<https://www.clarksons.com/services/research/>).
- 7 UNCTAD Secretariat, derived from various sources including Dynamar B.V. Publications, terminal operators and port authorities. Refers to year 2020.
- 8 Refers to year 2022. Source: BIMCO-ICS Manpower Report 2015 and BIMCO-ICS Seafarer Workforce Report, 2022 edition.
- 9 UNCTAD Secretariat, based on data provided by MarineTraffic (<http://marinetraffic.com>). Ships of 1000 GT and above.
- 10 Statistics presented correspond to the 6th edition of the IMF Balance of Payments and International Investment Position Manual, 2009 (BPM6, 2009).
- 11 UNCTAD Secretariat, generated from data provided by MDS Transmodal (<https://www.mdst.co.uk>).
- j Estimated. Data refers to 2020.

Symbols for missing values:

- | | |
|-----|--|
| 0 | Zero means that the amount is nil or negligible |
| .. | Not available or not separately reported |
| — | Not applicable |
| ... | Not available, including no quotation |
| # | Non-relevant calculation |
| - | Not publishable |
| *** | Negative accumulation of flows; Value included in regional and global totals |

Abbreviations & acronyms:

- | | |
|------|-----------------------------|
| DWT: | Dead weight tons |
| LNG: | Liquefied natural gas |
| LPG: | Liquefied petroleum gas |
| GDP: | Gross domestic product |
| GT: | Gross tons |
| TEU: | Twenty foot equivalent unit |

Disclaimer:

The designations employed and the presentation of the material on *UNCTADstat* do not imply the expression of any opinion whatsoever on the part of the secretariat of the United Nations concerning the legal status of any country, territory, city or area, or of its authorities, or concerning the delimitation of its frontiers or boundaries.

Where the designations "economy" or "country or area" appear in texts or tables, they cover regions, countries, territories, cities or areas.

The designations "developing", "transition" and "developed" are intended for statistical convenience and do not necessarily express a judgement about the stage reached by a particular economy in the development process.

UNCTAD strives for the highest level of accuracy and is committed to promptly correcting any errors on its part. It does not guarantee or make any express or implied representations regarding the accuracy, reliability, correctness, fitness for use for a particular purpose, or otherwise, whatsoever, of any of the tables in *UNCTADstat*.

Generation date: 11 April 2024