

MARITIME PROFILE: SPAIN

GENERAL INFORMATION FOR 2017

Population
46.354 Millions

GDP
1 311 937 Millions current US\$

Merchandise trade ¹
672 252 Millions current US\$

Coast/area ratio ²
(e) 15 m/km²

Ship building ³
46 923 GT

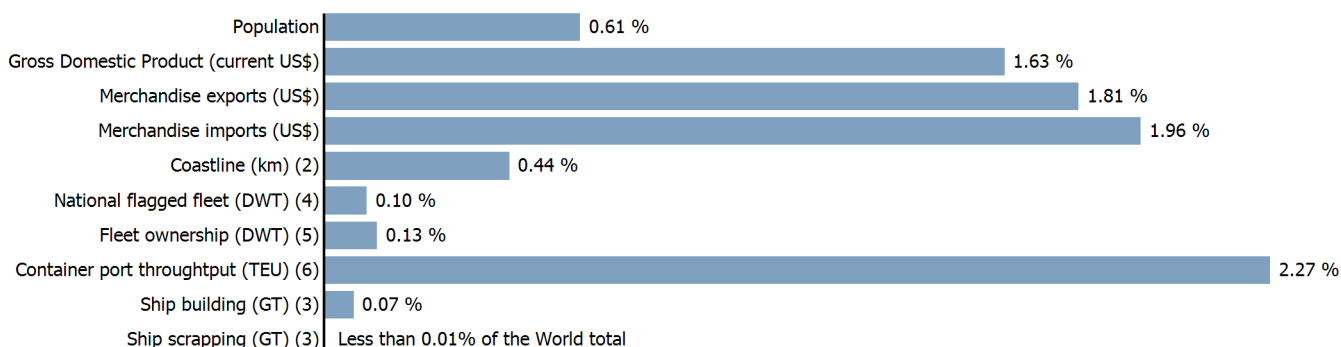
Ship scrapping ³
432 GT

Fleet - National flag ⁴
1 908 Thousands DWT

Fleet - Ownership ⁵
2 347 Thousands DWT

Container port throughput ⁶
17 065 000 TEU

WORLD SHARES FOR 2017



INTERNATIONAL MERCHANDISE TRADE

Total merchandise trade

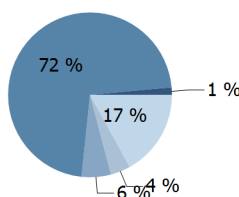
(millions of US\$)	2005	2010	2015	2017
Merchandise exports	192 644	254 418	282 274	320 063
Merchandise imports	288 786	327 016	311 851	352 188
Merchandise trade balance	-96 142	-72 598	-29 578	-32 125

+10.4 %

Merchandise exports growth rate in 2017

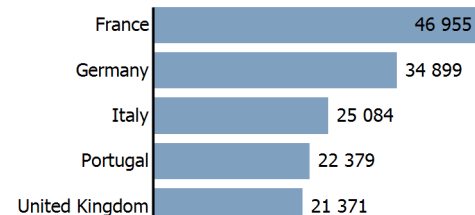
Export structure by product group in 2017

(as % of total exports)



Top 5 partners in 2017

(exports, millions of US\$)



INTERNATIONAL TRADE IN TRANSPORT SERVICES

Services exports by main category ⁷

(as % of total services)	2005	2010	2015	2017
Transport	-	-	13.1	(e) 12.8
Travel	-	48.2	47.9	(e) 49.1
Other services	-	-	35.8	(e) 34.9

+10.4 %

Transport services exports growth rate in 2017

Total trade in transport services ⁷

(millions of US\$)	2005	2010	2015	2017
Transport services exports	-	-	15 511	(e) 17 765
Transport services imports	-	-	13 315	(e) 14 704
Transport services trade balance	-	-	2 196	(e) 3 062

SPAIN

NATIONAL FLEET

Carrying capacity by type of ship ⁴

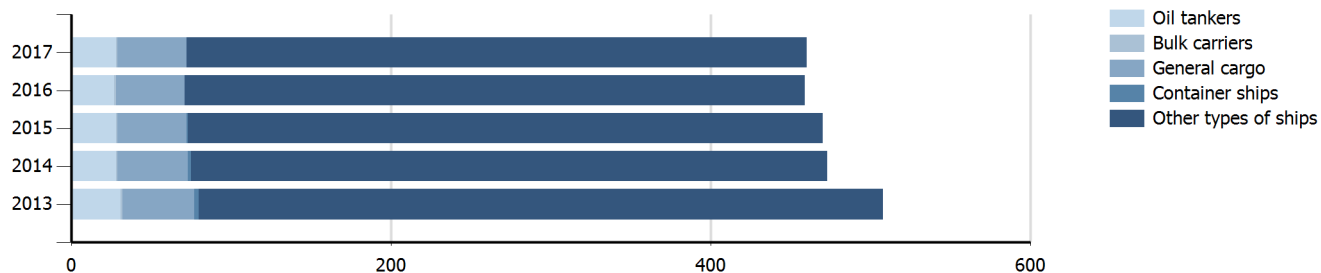
(Thousands DWT)	2005	2010	2015	2017
Total fleet	2 655.0	2 554.7	1 836.1	1 908.3
Oil tankers	962.0	1 035.7	449.3	443.6
Bulk carriers	215.0	34.9	10.9	10.9
General cargo	338.0	207.6	177.8	186.5
Container ships	231.0	164.9	7.9	..
Other types of ships	909.0	1 111.7	1 190.2	1 267.3

+4.8 %

Fleet growth rate in 2017

Fleet by type of ship ⁴

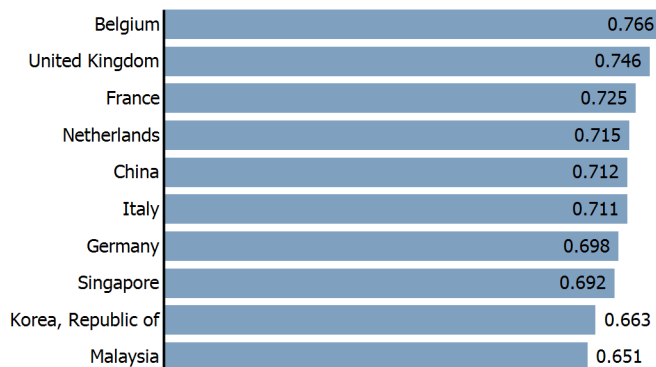
(Number of ships)



LINER SHIPPING CONNECTIVITY INDEX

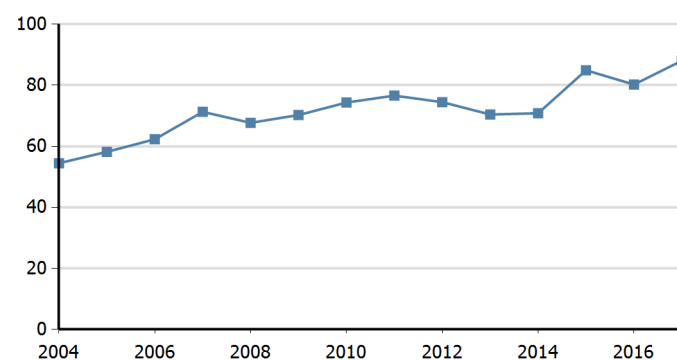
Bilateral connectivity index - Top 10 partners in 2017 ⁸

Can only take values between 0 (minimum) and 1 (maximum)



National connectivity index ⁸

Maximum 2004=100 for China



SPAIN

Source: UNCTADstat (<http://unctadstat.unctad.org>)

Notes:

- 1 Sum of exports and imports.
- 2 Coastline length based on data calculated in 2000 from the World Vector Shoreline database at 1:250,000 scale.
- 3 Propelled seagoing merchant vessels of 100 GT and above. Source: Clarksons Research.
- 4 Propelled seagoing merchant vessels of 100 GT and above, on 1 January. Source: Clarksons Research.
- 5 Propelled seagoing merchant vessels of 1000 GT and above, on 1 January. Source: Clarksons Research.
- 6 TEU: Twenty Foot Equivalent Unit. Source: UNCTAD Secretariat, derived from various sources including Dynamar B.V. Publications, terminal operators and port authorities.
- 7 Statistics presented correspond to the 6th edition of the IMF Balance of Payments and International Investment Position Manual, 2009 (BPM6, 2009).
- 8 Source: UNCTAD Secretariat, generated from data provided by Lloyds List Intelligence.
- e Estimated.

Symbols for missing values:

- 0 Zero means that the amount is nil or negligible
- .. Not available or not separately reported
- Not applicable
- ... Not available, including no quotation
- # Non-relevant calculation
- Not publishable
- *** Negative accumulation of flows; Value included in regional and global totals

Abbreviations & acronyms:

- DWT: Dead weight tons
- GDP: Gross domestic product
- GT: Gross tons
- TEU: Twenty foot equivalent unit

Disclaimer:

The designations employed and the presentation of the material on UNCTADstat do not imply the expression of any opinion whatsoever on the part of the secretariat of the United Nations concerning the legal status of any country, territory, city or area, or of its authorities, or concerning the delimitation of its frontiers or boundaries.

Where the designations "economy" or "country or area" appear in texts or tables, they cover regions, countries, territories, cities or areas.

UNCTAD strives for the highest level of accuracy and is committed to promptly correcting any errors on its part. It does not guarantee or make any express or implied representations regarding the accuracy, reliability, correctness, fitness for use for a particular purpose, or otherwise, whatsoever, of any of the tables in UNCTADstat.

Generation date: 19 November 2018