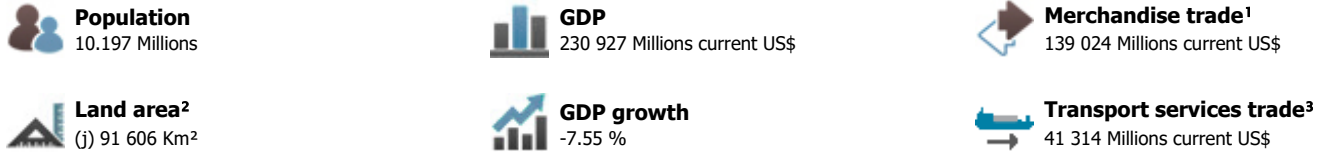


MARITIME PROFILE: PORTUGAL

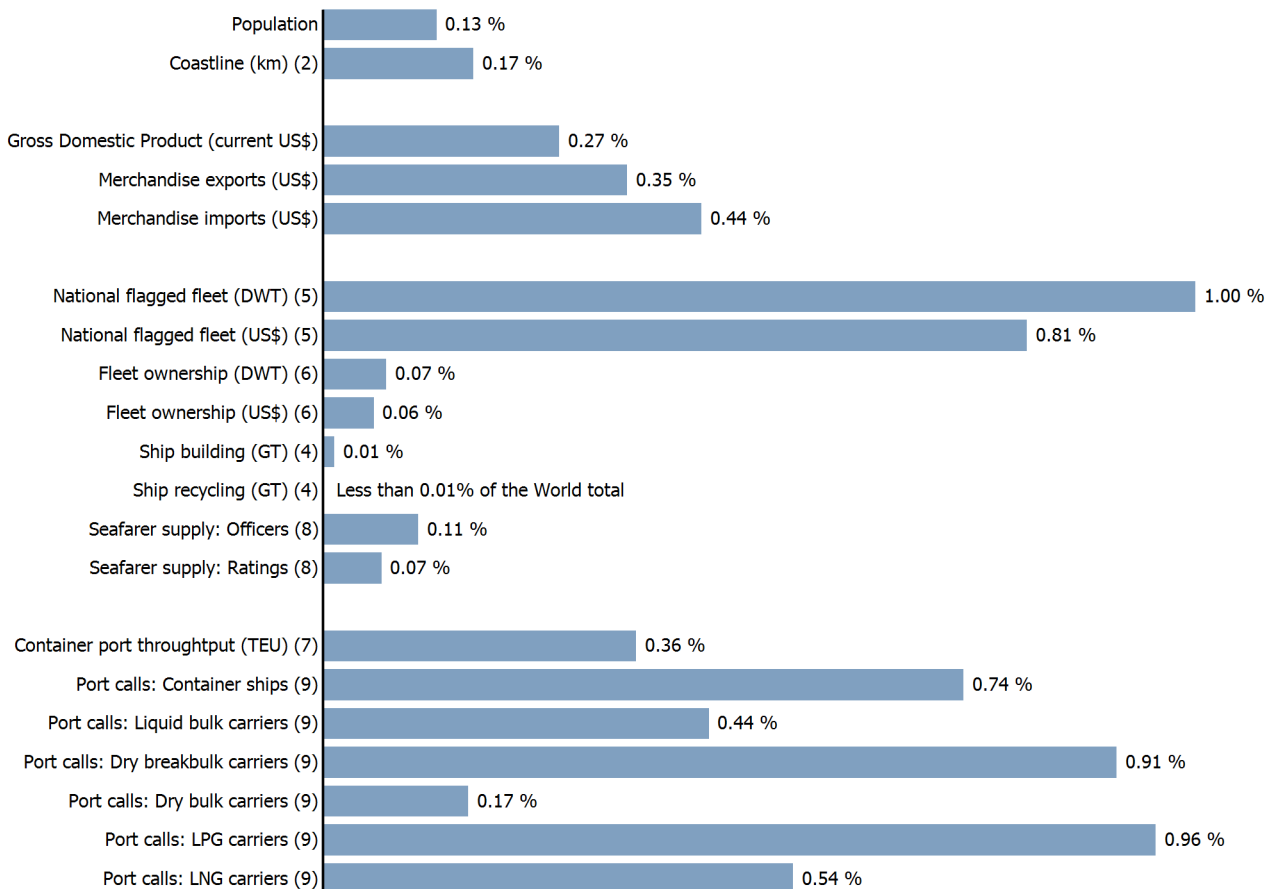
GENERAL INFORMATION FOR 2020



MARITIME KEY FIGURES FOR 2020



WORLD SHARES FOR 2020



PORTUGAL

INTERNATIONAL MERCHANDISE TRADE

Total merchandise trade

(millions of US\$)	2005	2010	2015	2020
Merchandise exports	38 150	49 406	55 047	61 509
Merchandise imports	61 184	77 749	66 914	77 515
Merchandise trade balance	-23 034	-28 343	-11 867	-16 005

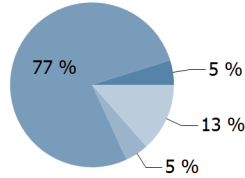
-8.3 %

Merchandise exports growth rate in 2020

Export structure by product group in 2020

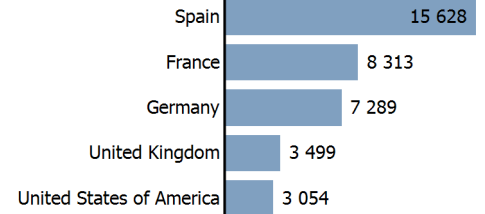
(as % of total exports)

- All food items
- Fuels
- Manufactured goods
- Other



Top 5 partners in 2020

(exports, millions of US\$)



INTERNATIONAL TRADE IN TRANSPORT SERVICES

Services exports by main category¹⁰

(as % of total services)	2005	2010	2015	2020
Transport	19.9	25.4	22.9	21.2
Travel	50.8	43.5	46.6	34.6
Other services	23.8	27.5	27.6	39.5

-35.0 %

Transport services exports growth rate in 2020

Total trade in transport services¹⁰

(millions of US\$)	2005	2010	2015	2020
Transport services exports	3 009	5 880	6 316	5 416
Transport services imports	2 391	3 744	3 634	3 296
Transport services trade balance	618	2 136	2 683	2 120

NATIONAL FLEET

Carrying capacity by type of ship⁵

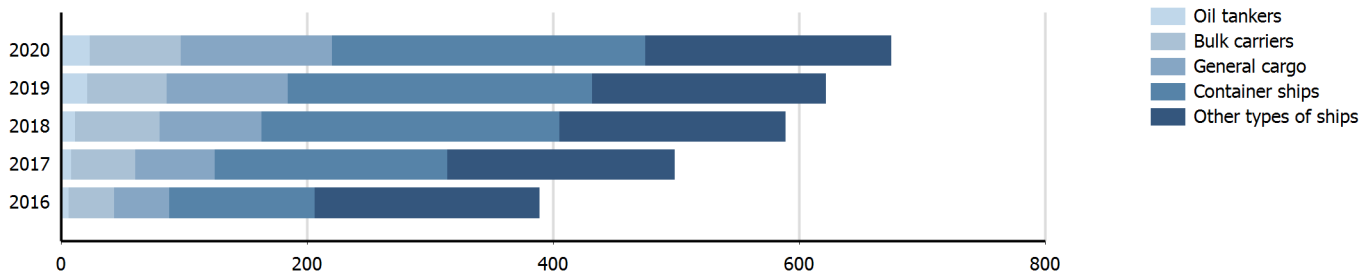
(Thousands DWT)	2005	2010	2015	2020
Total fleet	1 757.0	1 288.3	5 259.4	20 791.8
Oil tankers	1 107.0	676.7	514.1	2 418.7
Bulk carriers	223.0	146.8	1 281.0	6 212.5
General cargo	219.0	258.7	199.6	957.7
Container ships	41.0	35.1	2 848.1	10 687.8
Other types of ships	167.0	171.1	416.6	515.2

+6.1 %

Fleet growth rate in 2020

Fleet by type of ship⁵

(Number of ships)

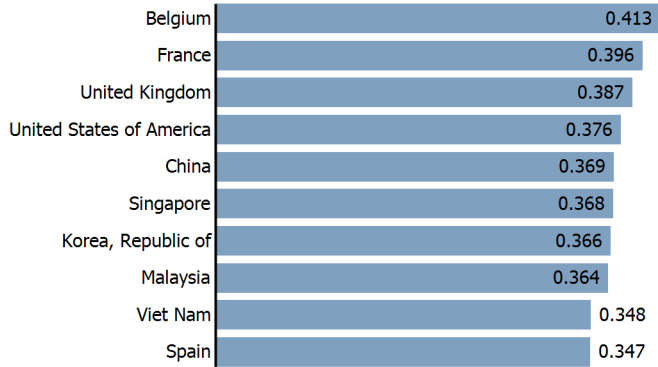


PORTUGAL

LINER SHIPPING CONNECTIVITY

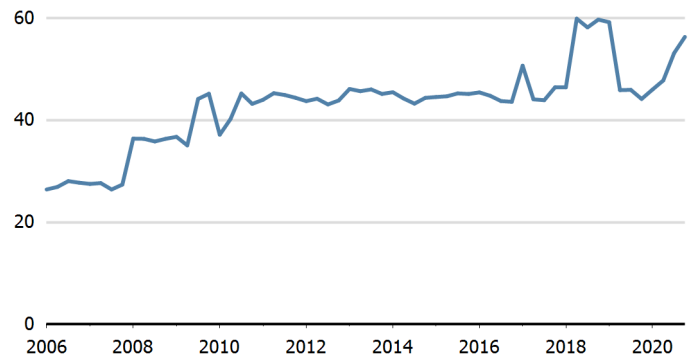
Bilateral connectivity index - Top 10 partners in 2020¹¹

Can only take values between 0 (minimum) and 1 (maximum)



Liner shipping connectivity index¹¹

Maximum 2006=100 for China



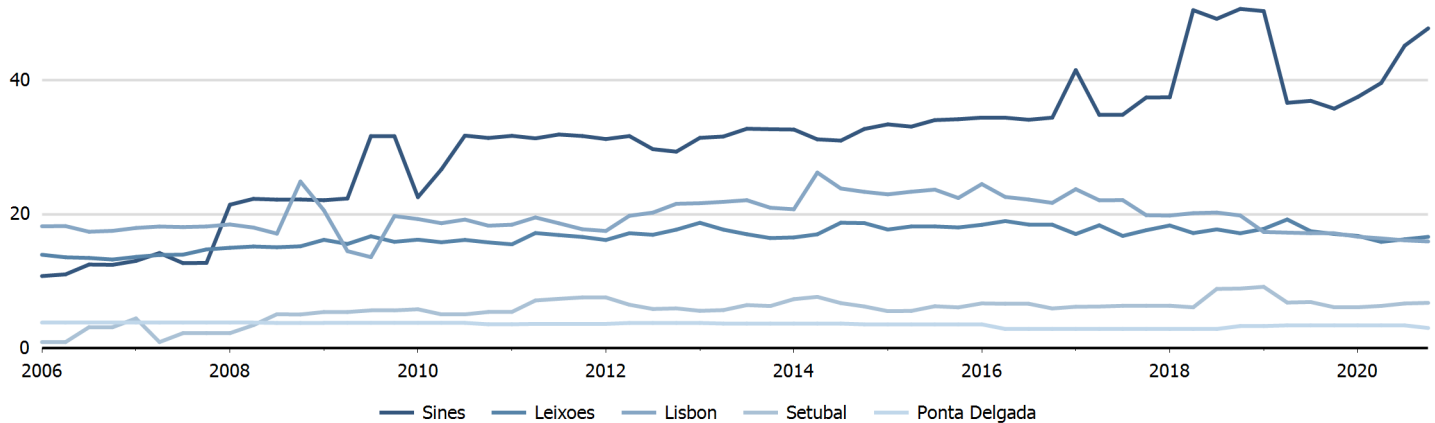
PORT CALLS AND PERFORMANCE

Port calls, time spent in ports, vessel age and size in 2020⁹

	Number of arrivals	Median time in port (days)	Avg age of vessels	Avg size (GT) of vessels	Avg cargo carrying capacity (DWT) per vessel	Avg container carrying capacity (TEU) per container ship	Maximum size (GT) of vessels
All ships	11 417	1.04	15	16 151	12 301	2 484	232 618
Liquid bulk carriers	2 170	0.87	13	12 264	20 104	..	161 983
Liquefied petroleum gas carriers	504	1.01	11	8 411	9 644	..	48 300
Liquefied natural gas carriers	67	1.05	10	104 759	83 311	..	136 410
Dry bulk carriers	445	2.13	20	14 951	25 005	..	104 728
Dry breakbulk carriers	3 779	1.55	16	4 977	6 704	..	43 855
Roll-on/ roll-off ships	884	..	16	20 567	6 807	..	72 700
Container ships	3 385	0.71	16	27 168	..	2 484	232 618
Passenger ships	183	..	21	59 665	183 200

Port liner shipping connectivity index - Top 5 ports in 2020¹¹

Maximum 2006=100 for China, Hong Kong SAR



PORTUGAL

Source: Detailed data sources are available in the documentation of the corresponding tables in the Data Center (http://stats.unctad.org/data_center). A link to these tables is provided in each section of the profile.

Notes:

- 1 Sum of exports and imports.
- 2 Land area refers to the total area of a country excluding area under inland water bodies. It differs from the country area, that includes area under inland water bodies, but excludes offshore territorial waters.
Coastline length based on data calculated in 2000 from the World Vector Shoreline database at 1:250,000 scale.
- 3 Sum of exports and imports. Statistics presented correspond to the 6th edition of the IMF Balance of Payments and International Investment Position Manual, 2009 (BPM6, 2009).
- 4 Propelled seagoing merchant vessels of 100 GT and above. Source: Clarksons Research (<https://www.clarksons.com/services/research/>).
- 5 Propelled seagoing merchant vessels of 100 GT and above, on 1 January. Source: Clarksons Research (<https://www.clarksons.com/services/research/>).
- 6 Propelled seagoing merchant vessels of 1000 GT and above, on 1 January. Source: Clarksons Research (<https://www.clarksons.com/services/research/>).
- 7 UNCTAD Secretariat, derived from various sources including Dynamar B.V. Publications, terminal operators and port authorities. Refers to year 2019.
- 8 Refers to year 2015. Source: BIMCO-ICS Manpower Report 2015.
- 9 UNCTAD Secretariat, based on data provided by MarineTraffic (<http://marinetraffic.com>). Ships of 1000 GT and above.
- 10 Statistics presented correspond to the 6th edition of the IMF Balance of Payments and International Investment Position Manual, 2009 (BPM6, 2009).
- 11 UNCTAD Secretariat, generated from data provided by MDS Transmodal (<https://www.mdst.co.uk>).
- j Estimated. Data refers to 2016.

Symbols for missing values:

- 0 Zero means that the amount is nil or negligible
- .. Not available or not separately reported
- Not applicable
- ... Not available, including no quotation
- # Non-relevant calculation
- Not publishable
- *** Negative accumulation of flows; Value included in regional and global totals

Abbreviations & acronyms:

- DWT: Dead weight tons
- LNG: Liquefied natural gas
- LPG: Liquefied petroleum gas
- GDP: Gross domestic product
- GT: Gross tons
- TEU: Twenty foot equivalent unit

Disclaimer:

The designations employed and the presentation of the material on *UNCTADstat* do not imply the expression of any opinion whatsoever on the part of the secretariat of the United Nations concerning the legal status of any country, territory, city or area, or of its authorities, or concerning the delimitation of its frontiers or boundaries.

Where the designations "economy" or "country or area" appear in texts or tables, they cover regions, countries, territories, cities or areas.

The designations "developing", "transition" and "developed" are intended for statistical convenience and do not necessarily express a judgement about the stage reached by a particular economy in the development process.

UNCTAD strives for the highest level of accuracy and is committed to promptly correcting any errors on its part. It does not guarantee or make any express or implied representations regarding the accuracy, reliability, correctness, fitness for use for a particular purpose, or otherwise, whatsoever, of any of the tables in *UNCTADstat*.

Generation date: 22 July 2021