

MARITIME PROFILE: COMOROS

GENERAL INFORMATION FOR 2017

Population 0.814 Millions	GDP 1 219 Millions current US\$	Merchandise trade ¹ 291 Millions current US\$
Coast/area ratio ² (e) 252 m/km ²	Ship building ³ ..	Ship scrapping ³ ..
Fleet - National flag ⁴ 958 Thousands DWT	Fleet - Ownership ⁵ ..	Container port throughput ⁶ ..

WORLD SHARES FOR 2017

Population	0.01 %
Gross Domestic Product (current US\$)	Less than 0.01% of the World total
Merchandise exports (US\$)	Less than 0.01% of the World total
Merchandise imports (US\$)	Less than 0.01% of the World total
Coastline (km) (2)	0.03 %
National flagged fleet (DWT) (4)	0.05 %
Fleet ownership (DWT) (5)	Not available or not separately reported
Container port throughput (TEU) (6)	Not available or not separately reported
Ship building (GT) (3)	Not available or not separately reported
Ship scrapping (GT) (3)	Not available or not separately reported

INTERNATIONAL MERCHANDISE TRADE

Total merchandise trade

(millions of US\$)	2005	2010	2015	2017
Merchandise exports	12	21	17	40
Merchandise imports	99	233	214	252
Merchandise trade balance	-87	-212	-197	-212

+28.6 %

Merchandise exports growth rate in 2017

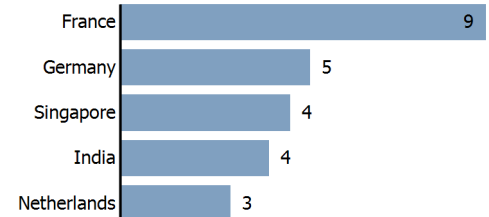
Export structure by product group in 2017

(as % of total exports)



Top 5 partners in 2017

(exports, millions of US\$)



INTERNATIONAL TRADE IN TRANSPORT SERVICES

Services exports by main category ⁷

(as % of total services)	2005	2010	2015	2017
Transport	11.2	6.9	6.4	-
Travel	55.3	54.0	48.3	-
Other services	33.6	39.0	45.3	-

Transport services exports growth rate in 2017

Total trade in transport services ⁷

(millions of US\$)	2005	2010	2015	2017
Transport services exports	5	4	5	-
Transport services imports	28	57	43	-
Transport services trade balance	-23	-53	-37	-

COMOROS

NATIONAL FLEET

Carrying capacity by type of ship ⁴

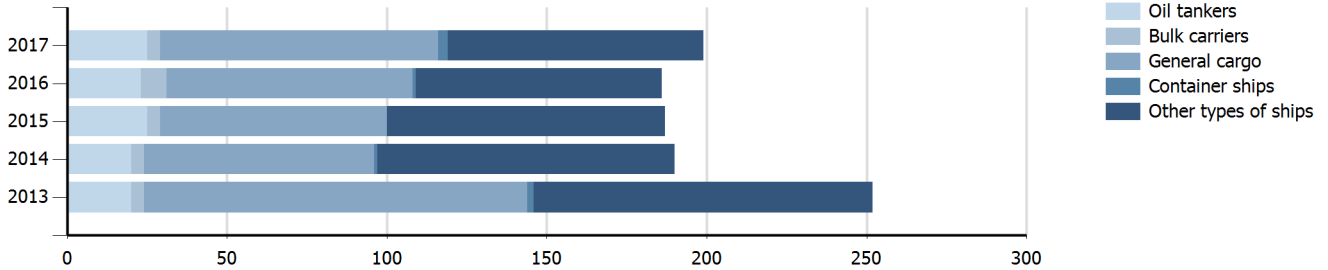
(Thousands DWT)	2005	2010	2015	2017
Total fleet	564.0	1 211.8	917.0	958.4
Oil tankers	119.0	330.4	492.6	445.9
Bulk carriers	174.0	248.6	112.0	76.0
General cargo	242.0	508.9	233.9	340.4
Container ships	5.0	16.8	..	21.4
Other types of ships	24.0	107.0	78.5	74.6

-12.0 %

Fleet growth rate in 2017

Fleet by type of ship ⁴

(Number of ships)



LINER SHIPPING CONNECTIVITY INDEX

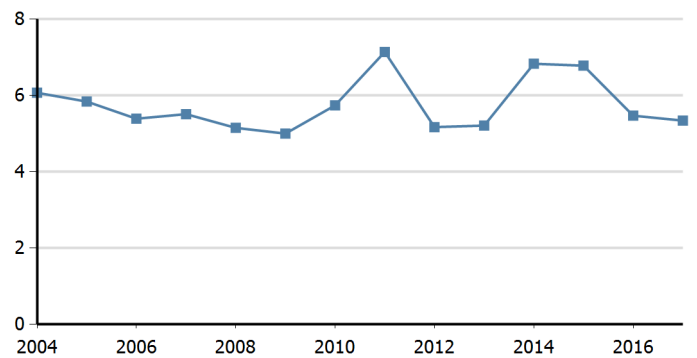
Bilateral connectivity index - Top 10 partners in 2017 ⁸

Can only take values between 0 (minimum) and 1 (maximum)

United Arab Emirates	0.267
Belgium	0.264
France	0.262
Pakistan	0.258
Mozambique	0.238
Madagascar	0.231
China	0.211
Singapore	0.210
Spain	0.209
United States of America	0.209

National connectivity index ⁸

Maximum 2004=100 for China



Source: UNCTADstat (<http://unctadstat.unctad.org>)

Notes:

- 1 Sum of exports and imports.
- 2 Coastline length based on data calculated in 2000 from the World Vector Shoreline database at 1:250,000 scale.
- 3 Propelled seagoing merchant vessels of 100 GT and above. Source: Clarksons Research.
- 4 Propelled seagoing merchant vessels of 100 GT and above, on 1 January. Source: Clarksons Research.
- 5 Propelled seagoing merchant vessels of 1000 GT and above, on 1 January. Source: Clarksons Research.
- 6 TEU: Twenty Foot Equivalent Unit. Source: UNCTAD Secretariat, derived from various sources including Dynamar B.V. Publications, terminal operators and port authorities.
- 7 Statistics presented correspond to the 6th edition of the IMF Balance of Payments and International Investment Position Manual, 2009 (BPM6, 2009).
- 8 Source: UNCTAD Secretariat, generated from data provided by Lloyds List Intelligence.
- e Estimated.

Symbols for missing values:

- 0 Zero means that the amount is nil or negligible
- .. Not available or not separately reported
- Not applicable
- ... Not available, including no quotation
- # Non-relevant calculation
- Not publishable
- *** Negative accumulation of flows; Value included in regional and global totals

Abbreviations & acronyms:

- DWT: Dead weight tons
- GDP: Gross domestic product
- GT: Gross tons
- TEU: Twenty foot equivalent unit

Disclaimer:

The designations employed and the presentation of the material on UNCTADstat do not imply the expression of any opinion whatsoever on the part of the secretariat of the United Nations concerning the legal status of any country, territory, city or area, or of its authorities, or concerning the delimitation of its frontiers or boundaries.

Where the designations "economy" or "country or area" appear in texts or tables, they cover regions, countries, territories, cities or areas.

UNCTAD strives for the highest level of accuracy and is committed to promptly correcting any errors on its part. It does not guarantee or make any express or implied representations regarding the accuracy, reliability, correctness, fitness for use for a particular purpose, or otherwise, whatsoever, of any of the tables in UNCTADstat.

Generation date: 19 November 2018