

## GENERAL PROFILE: TANZANIA, UNITED REPUBLIC OF

### GENERAL INFORMATION FOR 2019

**Population**  
58.005 Millions

**Exchange rate**  
2 288.206 TZS/US\$

**GDP**  
64 333 Millions current US\$

**Land area<sup>1</sup>**  
(n) 885 800 km<sup>2</sup>

**CPI growth**  
3.46 %

**GDP growth**  
6.95 %

### INTERNATIONAL MERCHANDISE TRADE

#### Total merchandise trade

(millions of US\$)

	2005	2010	2015	2019
Merchandise exports	1 679	4 051	4 834	5 005
Merchandise imports	3 287	7 874	10 789	9 452
Merchandise trade balance	-1 608	-3 824	-5 955	-4 447

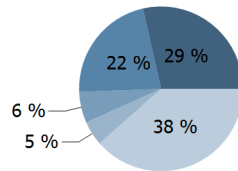
**+23.8 %**

Merchandise exports  
growth rate in 2019

#### Export structure by product group in 2019

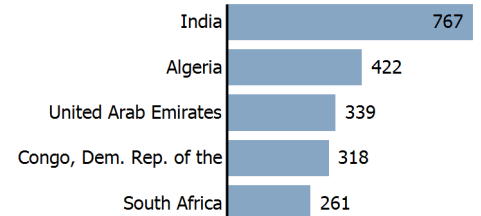
(as % of total exports)

- All food items
- Agricultural raw materials
- Ores and metals
- Manufactured goods
- Other



#### Top 5 partners in 2019

(exports, millions of US\$)



### INTERNATIONAL TRADE IN SERVICES

#### Total trade in services<sup>2</sup>

(millions of US\$)

	2005	2010	2015	2019
Services exports	1 269	2 046	3 412	(e) 4 119
Services imports	1 207	1 889	2 629	(e) 1 938
Services trade balance	62	157	783	(e) 2 181

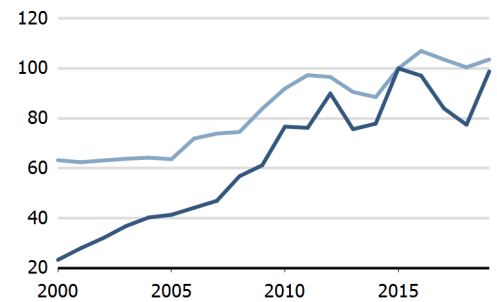
#### Services exports by main category<sup>2</sup>

(as % of total services)

	2005	2010	2015	2019
Transport	17.6	22.2	30.0	-
Travel	64.9	61.3	55.7	-
Other services	17.5	16.5	14.2	-

### TRADE INDICES

- Terms of trade index
- Purchasing power index of exports



### ECONOMIC TRENDS

#### Economic indicators

(millions of US\$ unless otherwise specified)

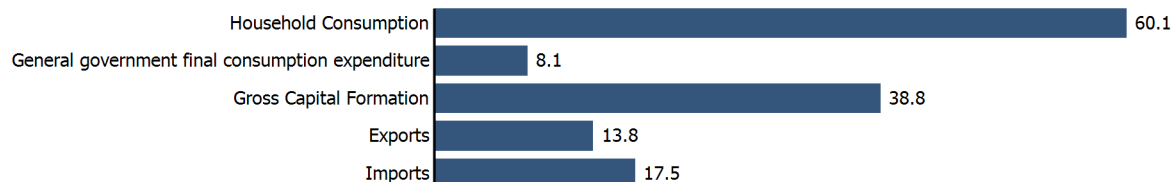
	2005	2010	2015	2019
GDP, current	17 611	32 370	48 562	64 333
GDP per capita, current US\$	458	730	943	1 109
Real GDP growth, y-on-y, %	7.30	6.31	6.16	6.95
Current account balance, % of GDP	-6.20	-6.83	-8.19	(e) -2.16
Exchange rate (/US\$)	1 128.934	1 395.625	1 991.391	2 288.206

**+7.0 %**

Gross domestic product  
growth rate in 2019

#### GDP by expenditure in 2018

(as % of total GDP)



# TANZANIA, UNITED REPUBLIC OF

## FDI AND EXTERNAL FINANCIAL RESOURCES

### Financial flows

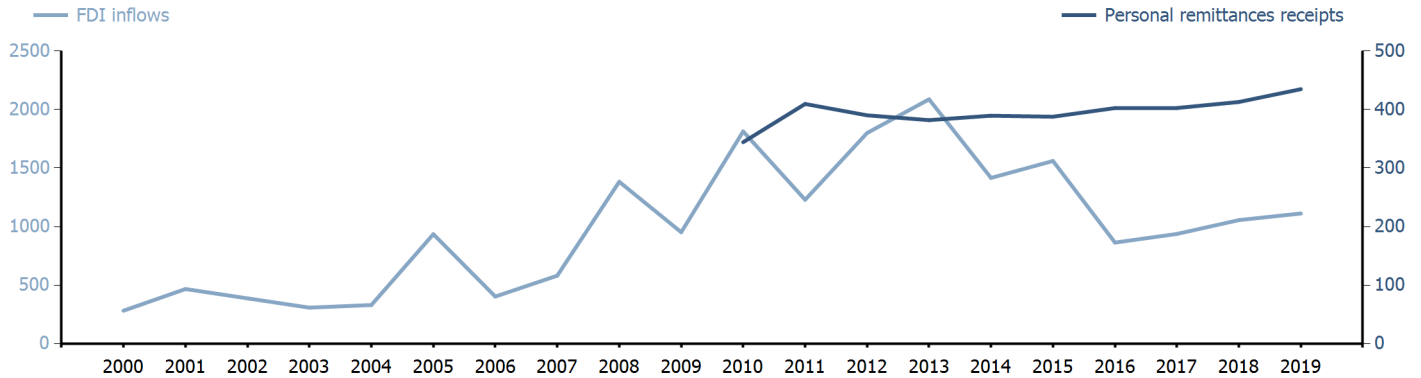
(millions of US\$ unless otherwise specified)

	2005	2010	2015	2019
FDI inflows	935.52	1 813.25	1 560.80	1 112.40
FDI outflows	..	..	..	..
Personal remittances, % of GDP	..	1.06	0.80	0.68

FDI outflows as % of GDP in 2019

### Financial flows trends

(millions of US\$)



## TRADE IN GOODS AND SERVICES

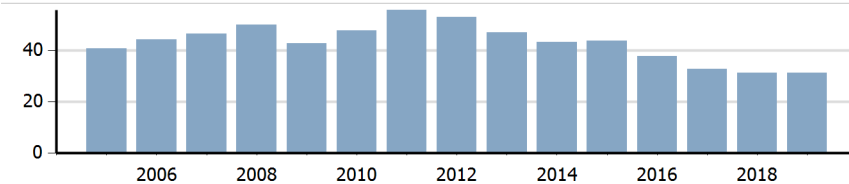
### Trade balance indicators<sup>2</sup>

(as % and index)

	2005	2010	2015	2019
Balance, % of GDP	-7.00	-8.29	-7.69	(e) -1.11
Balance, % of imports	-29.33	-29.65	-29.93	(e) -6.86
Normalized balance	-0.172	-0.174	-0.176	(e) -0.036

### Trade openness<sup>2</sup>

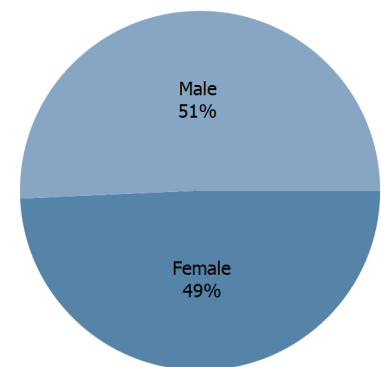
(sum of imports and exports as % of GDP)



## LABOUR FORCE

### Labour force by gender in 2019

(as % of total labour force, all sectors)



## OTHER INDICATORS

### Maritime transport indicators

	2005	2010	2015	2019
Merchant fleet, national flag (thousands of DWT)	41	117	12 558	841
Liner shipping connectivity index (maximum 2006 = 100 for China)	..	11.66	11.74	23.91
Container port throughput (TEU)	..	371 278	612 600	405 775

0.042 %

Share of the total world merchant fleet in 2019

### Information economy indicators

(as % of)

	2005	2010	2015	2019
Share of ICT goods, % of total exports	0.26	0.35	6.07	..
Share of ICT goods, % of total imports	5.83	3.77	3.88	..
Share of workforce involved in the ICT sector	..	..	..	..

# TANZANIA, UNITED REPUBLIC OF

Source: UNCTADstat (<http://unctadstat.unctad.org>)

## Notes:

- 1 Land area refers to the total area of a country excluding area under inland water bodies. It differs from the country area, that includes area under inland water bodies, but excludes offshore territorial waters.
- 2 Statistics presented correspond to the 6th edition of the IMF Balance of Payments and International Investment Position Manual (BPM6, 2009).
- e Estimated.
- n Estimated. Data refers to 2016.

## Symbols for missing values:

- 0 Zero means that the amount is nil or negligible
- .. Not available or not separately reported
- \_ Not applicable
- ... Not available, including no quotation
- # Non-relevant calculation
- Not publishable
- \*\*\* Negative accumulation of flows; Value included in regional and global totals

## Abbreviations & acronyms:

- DWT: Dead weight tons
- FDI: Foreign direct investment
- GDP: Gross domestic product
- ICT: Information and communication technology
- TEU: Twenty foot equivalent unit
- US\$: United States dollar

## Disclaimer:

The designations employed and the presentation of the material on UNCTADstat do not imply the expression of any opinion whatsoever on the part of the secretariat of the United Nations concerning the legal status of any country, territory, city or area, or of its authorities, or concerning the delimitation of its frontiers or boundaries.

Where the designations "economy" or "country or area" appear in texts or tables, they cover regions, countries, territories, cities or areas.

UNCTAD strives for the highest level of accuracy and is committed to promptly correcting any errors on its part. It does not guarantee or make any express or implied representations regarding the accuracy, reliability, correctness, fitness for use for a particular purpose, or otherwise, whatsoever, of any of the tables in UNCTADstat.

Generation date: 06 November 2020