

GENERAL PROFILE: SWEDEN

GENERAL INFORMATION FOR 2017

Population
9.911 Millions

Exchange rate
8.549 SEK/US\$

GDP
535 607 Millions current US\$

Land area ¹
(n) 407 310 km²

CPI growth
1.79 %

GDP growth
2.10 %

INTERNATIONAL MERCHANDISE TRADE

Total merchandise trade

(millions of US\$)

	2005	2010	2015	2017
Merchandise exports	130 962	158 549	140 024	153 110
Merchandise imports	111 697	148 946	138 398	154 018
Merchandise trade balance	19 265	9 604	1 625	-909

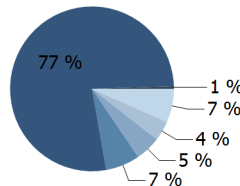
+9.9 %

Merchandise exports growth rate in 2017

Export structure by product group in 2017

(as % of total exports)

- All food items
- Agricultural raw materials
- Ores and metals
- Fuels
- Manufactured goods
- Other



Top 5 partners in 2017

(exports, millions of US\$)

Germany	16 351
Norway	15 432
Finland	10 517
Denmark	10 441
United States of America	10 078

INTERNATIONAL TRADE IN SERVICES

Total trade in services ²

(millions of US\$)

	2005	2010	2015	2017
Services exports	38 114	53 877	72 689	(e) 72 935
Services imports	39 194	50 638	61 651	(e) 68 250
Services trade balance	-1 081	3 239	11 038	(e) 4 685

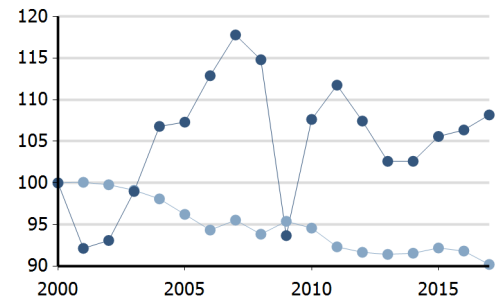
Services exports by main category ²

(as % of total services)

	2005	2010	2015	2017
Transport	24.6	20.1	16.3	(e) 15.6
Travel	17.2	15.5	15.6	(e) 19.3
Other services	56.4	63.0	67.2	(e) 63.9

TRADE INDICES

- Terms of trade index
- Purchasing power index of exports



ECONOMIC TRENDS

Economic indicators

(millions of US\$ unless otherwise specified)

	2005	2010	2015	2017
GDP, current	389 489	488 909	498 118	535 607
GDP per capita, current US\$	43 092	52 066	51 018	54 043
Real GDP growth, y-on-y, %	2.82	5.99	4.46	2.10
Current account balance, % of GDP	6.06	5.98	4.53	3.31
Exchange rate (/US\$)	7.473	7.208	8.435	8.549

+2.1 %

Gross domestic product growth rate in 2017

GDP by expenditure in 2016

(as % of total GDP)



SWEDEN

FDI AND EXTERNAL FINANCIAL RESOURCES

Financial flows

(millions of US\$ unless otherwise specified)

	2005	2010	2015	2017
FDI inflows	11 515.99	96.98	6 897.11	15 395.74
FDI outflows	28 633.00	20 729.88	14 391.85	24 302.54
Personal remittances, % of GDP	0.68	0.52

+4.5 %

FDI outflows as % of GDP in 2017

Financial flows trends

(millions of US\$)



TRADE IN GOODS AND SERVICES

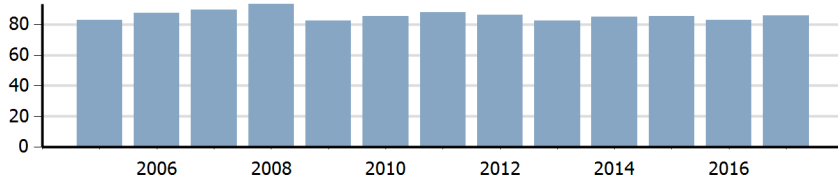
Trade balance indicators ²

(as % and index)

	2005	2010	2015	2017
Balance, % of GDP	6.35	4.83	4.99	(e) 3.19
Balance, % of imports	16.57	12.03	12.41	(e) 7.74
Normalized balance	0.077	0.057	0.058	(e) 0.037

Trade openness ²

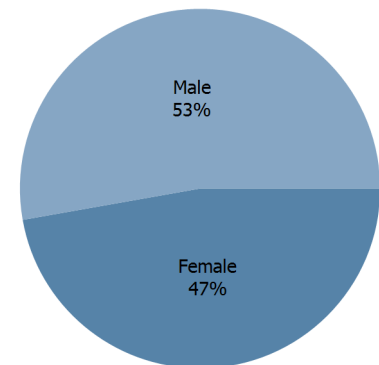
(sum of imports and exports as % of GDP)



LABOUR FORCE

Labour force by gender in 2017

(as % of total labour force, all sectors)



OTHER INDICATORS

Maritime transport indicators

	2005	2010	2015	2017
Merchant fleet, national flag (thousands of DWT)	2 191	2 206	1 457	1 078
Liner shipping connectivity index (maximum 2004 = 100 for China)	26.61	30.58	55.95	57.71
Container port throughput (TEU)	..	1 399 574	1 453 157	1 593 450

0.058 %

Share of the total world merchant fleet in 2017

Information economy indicators

(as % of)

	2005	2010	2015	2017
Share of ICT goods, % of total exports	11.22	9.72	6.95	6.07
Share of ICT goods, % of total imports	11.14	11.34	10.17	9.24
Share of workforce involved in the ICT sector	8.73	(o) 7.66

SWEDEN

Source: UNCTADstat (<http://unctadstat.unctad.org>)

Notes:

- 1 Land area refers to the total area of a country excluding area under inland water bodies. It differs from the country area, that includes area under inland water bodies, but excludes offshore territorial waters.
- 2 Statistics presented correspond to the 6th edition of the IMF Balance of Payments and International Investment Position Manual (BPM6, 2009).
- e Estimated.
- n Estimated. Data refers to 2016.
- o Number of persons employed in full time equivalent units. Total business economy includes repair of computers, personal and household goods; except financial and insurance activities.

Symbols for missing values:

- 0 Zero means that the amount is nil or negligible
- .. Not available or not separately reported
- Not applicable
- ... Not available, including no quotation
- # Non-relevant calculation
- Not publishable
- *** Negative accumulation of flows; Value included in regional and global totals

Abbreviations & acronyms:

- DWT: Dead weight tons
- FDI: Foreign direct investment
- GDP: Gross domestic product
- ICT: Information and communication technology
- TEU: Twenty foot equivalent unit
- US\$: United States dollar

Disclaimer:

The designations employed and the presentation of the material on UNCTADstat do not imply the expression of any opinion whatsoever on the part of the secretariat of the United Nations concerning the legal status of any country, territory, city or area, or of its authorities, or concerning the delimitation of its frontiers or boundaries.

Where the designations "economy" or "country or area" appear in texts or tables, they cover regions, countries, territories, cities or areas.

UNCTAD strives for the highest level of accuracy and is committed to promptly correcting any errors on its part. It does not guarantee or make any express or implied representations regarding the accuracy, reliability, correctness, fitness for use for a particular purpose, or otherwise, whatsoever, of any of the tables in UNCTADstat.

Generation date: 16 April 2019