

GENERAL PROFILE: PALAU

GENERAL INFORMATION FOR 2017

Population
0.022 Millions

Exchange rate
1.000 USD/US\$

GDP
324 Millions current US\$

Land area ¹
(m) 460 km²

CPI growth
1.28 %

GDP growth
2.00 %

INTERNATIONAL MERCHANDISE TRADE

Total merchandise trade

(millions of US\$)

	2005	2010	2015	2017
Merchandise exports	13	(e) 6	6	6
Merchandise imports	105	107	150	158
Merchandise trade balance	-92	(e) -101	-144	-151

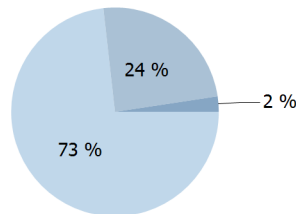
-1.8 %

Merchandise exports growth rate in 2017

Export structure by product group in 2017

(as % of total exports)

- All food items
- Manufactured goods
- Other



Top 5 partners in 2017

(exports, millions of US\$)

Japan	5
Micronesia (Federated States of)	0.296
India	0.285
Guam	0.280
United States of America	0.214

INTERNATIONAL TRADE IN SERVICES

Total trade in services ²

(millions of US\$)

	2005	2010	2015	2017
Services exports	-	-	-	-
Services imports	-	-	-	-
Services trade balance	-	-	-	-

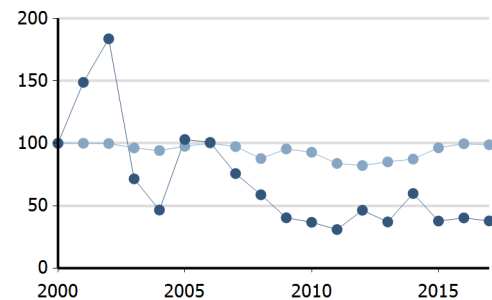
Services exports by main category ²

(as % of total services)

	2005	2010	2015	2017
Transport
Travel
Other services

TRADE INDICES

- Terms of trade index
- Purchasing power index of exports



ECONOMIC TRENDS

Economic indicators

(millions of US\$ unless otherwise specified)

	2005	2010	2015	2017
GDP, current	191	183	298	324
GDP per capita, current US\$	9 611	8 956	13 982	14 898
Real GDP growth, y-on-y, %	0.24	3.00	11.37	2.00
Current account balance, % of GDP	-20.69	-10.19	-8.15	(e) -13.06
Exchange rate (/US\$)	1.000	1.000	1.000	1.000

+2.0 %

Gross domestic product growth rate in 2017

GDP by expenditure in 2016

(as % of total GDP)



PALAU

FDI AND EXTERNAL FINANCIAL RESOURCES

Financial flows

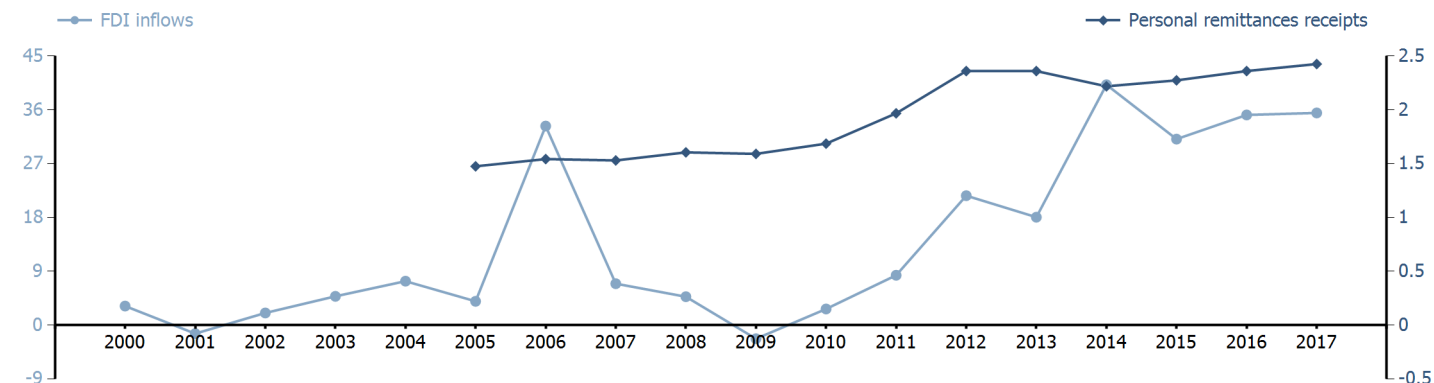
(millions of US\$ unless otherwise specified)

	2005	2010	2015	2017
FDI inflows	3.97	2.69	31.10	35.48
FDI outflows
Personal remittances, % of GDP	0.77	0.92	0.76	0.75

FDI outflows as % of GDP in 2017

Financial flows trends

(millions of US\$)



TRADE IN GOODS AND SERVICES

Trade balance indicators ²

(as % and index)

	2005	2010	2015	2017
Balance, % of GDP	-	-	-	-
Balance, % of imports	-	-	-	-
Normalized balance	-	-	-	-

Trade openness ²

(sum of imports and exports as % of GDP)

No data available

LABOUR FORCE

Labour force by gender in 2017

(as % of total labour force, all sectors)

No data available

OTHER INDICATORS

Maritime transport indicators

	2005	2010	2015	2017
Merchant fleet, national flag (thousands of DWT)	995
Liner shipping connectivity index (maximum 2004 = 100 for China)	1.04	3.43	1.32	3.27
Container port throughput (TEU)

Information economy indicators

(as % of)

	2005	2010	2015	2017
Share of ICT goods, % of total exports	1.58	..
Share of ICT goods, % of total imports	..	3.33	5.07	..
Share of workforce involved in the ICT sector

0.053 %

Share of the total world merchant fleet in 2017

PALAU

Source: UNCTADstat (<http://unctadstat.unctad.org>)

Notes:

- 1 Land area refers to the total area of a country excluding area under inland water bodies. It differs from the country area, that includes area under inland water bodies, but excludes offshore territorial waters.
- 2 Statistics presented correspond to the 6th edition of the IMF Balance of Payments and International Investment Position Manual (BPM6, 2009).
- e Estimated.
- m Estimated. Data refers to 2013.

Symbols for missing values:

- 0 Zero means that the amount is nil or negligible
- .. Not available or not separately reported
- _ Not applicable
- ... Not available, including no quotation
- # Non-relevant calculation
- Not publishable
- *** Negative accumulation of flows; Value included in regional and global totals

Abbreviations & acronyms:

- DWT: Dead weight tons
- FDI: Foreign direct investment
- GDP: Gross domestic product
- ICT: Information and communication technology
- TEU: Twenty foot equivalent unit
- US\$: United States dollar

Disclaimer:

The designations employed and the presentation of the material on UNCTADstat do not imply the expression of any opinion whatsoever on the part of the secretariat of the United Nations concerning the legal status of any country, territory, city or area, or of its authorities, or concerning the delimitation of its frontiers or boundaries.

Where the designations "economy" or "country or area" appear in texts or tables, they cover regions, countries, territories, cities or areas.

UNCTAD strives for the highest level of accuracy and is committed to promptly correcting any errors on its part. It does not guarantee or make any express or implied representations regarding the accuracy, reliability, correctness, fitness for use for a particular purpose, or otherwise, whatsoever, of any of the tables in UNCTADstat.

Generation date: 19 November 2018