

GENERAL PROFILE: JORDAN

GENERAL INFORMATION FOR 2019

Population
10.102 Millions

Exchange rate
0.710 JOD/US\$

GDP
43 361 Millions current US\$

Land area¹
(n) 88 780 km²

CPI growth
0.76 %

GDP growth
1.90 %

INTERNATIONAL MERCHANDISE TRADE

Total merchandise trade

(millions of US\$)

	2005	2010	2015	2019
Merchandise exports	4 302	7 028	7 833	8 313
Merchandise imports	10 498	15 564	20 475	19 337
Merchandise trade balance	-6 196	-8 535	-12 642	-11 024

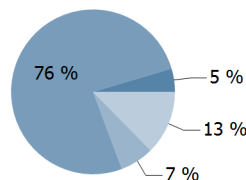
+7.3 %

Merchandise exports growth rate in 2019

Export structure by product group in 2019

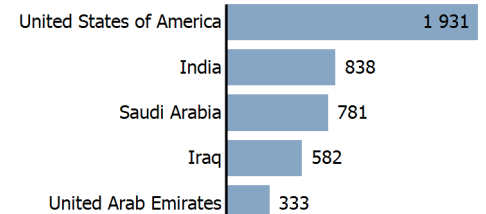
(as % of total exports)

- All food items
- Ores and metals
- Manufactured goods
- Other



Top 5 partners in 2019

(exports, millions of US\$)



INTERNATIONAL TRADE IN SERVICES

Total trade in services²

(millions of US\$)

	2005	2010	2015	2019
Services exports	2 412	5 724	6 269	(e) 7 965
Services imports	2 542	4 419	4 528	(e) 4 785
Services trade balance	-130	1 305	1 741	(e) 3 180

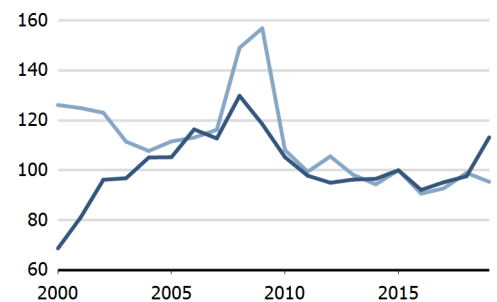
Services exports by main category²

(as % of total services)

	2005	2010	2015	2019
Transport	19.5	19.5	19.7	(e) 18.5
Travel	59.7	62.6	64.8	(e) 72.6
Other services	20.8	17.8	15.5	(e) 8.9

TRADE INDICES

- Terms of trade index
- Purchasing power index of exports



ECONOMIC TRENDS

Economic indicators

(millions of US\$ unless otherwise specified)

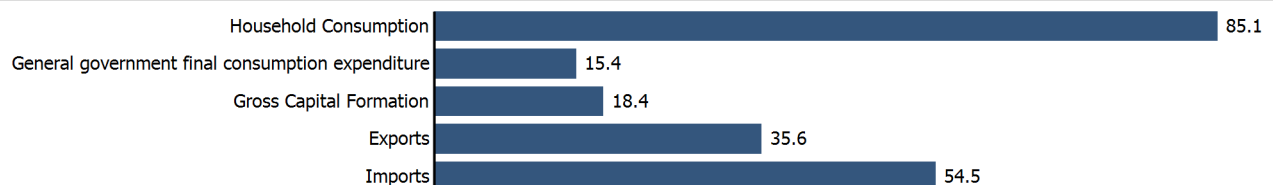
	2005	2010	2015	2019
GDP, current	12 720	26 520	37 923	43 361
GDP per capita, current US\$	2 206	3 652	4 092	4 292
Real GDP growth, y-on-y, %	8.15	2.66	2.58	1.90
Current account balance, % of GDP	-17.86	-7.10	-8.98	(e) -2.79
Exchange rate (/US\$)	0.709	0.710	0.710	0.710

+1.9 %

Gross domestic product growth rate in 2019

GDP by expenditure in 2018

(as % of total GDP)



JORDAN

FDI AND EXTERNAL FINANCIAL RESOURCES

Financial flows

(millions of US\$ unless otherwise specified)

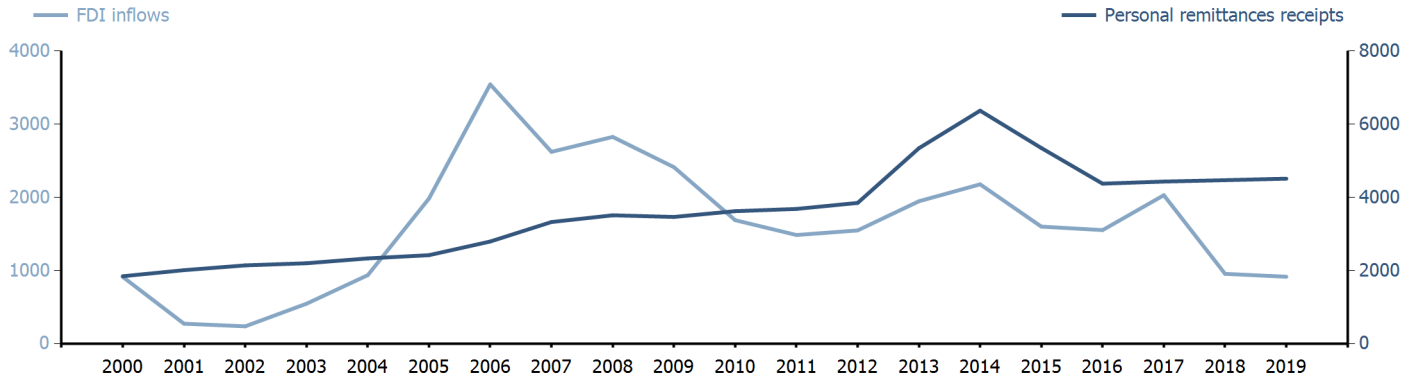
	2005	2010	2015	2019
FDI inflows	1 984.49	1 688.59	1 600.28	(j) 915.77
FDI outflows	163.19	28.45	0.99	(j) 41.13
Personal remittances, % of GDP	19.03	13.66	14.10	10.40

+0.1 %

FDI outflows as % of GDP in 2019

Financial flows trends

(millions of US\$)



TRADE IN GOODS AND SERVICES

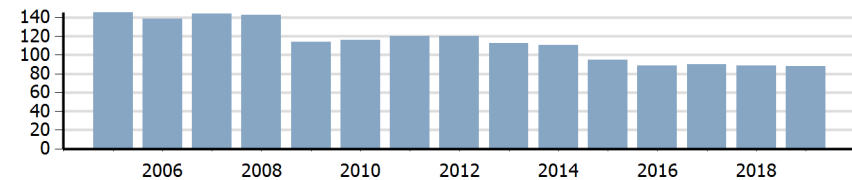
Trade balance indicators²

(as % and index)

	2005	2010	2015	2019
Balance, % of GDP	-39.94	-21.40	-20.38	(e) -12.91
Balance, % of imports	-43.09	-31.14	-35.40	(e) -25.56
Normalized balance	-0.275	-0.184	-0.215	(e) -0.147

Trade openness²

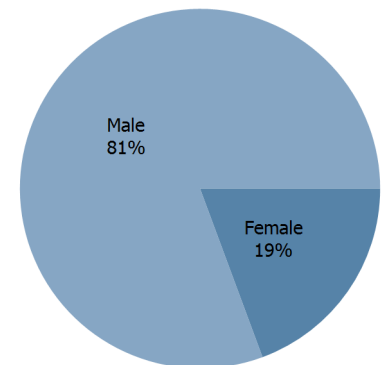
(sum of imports and exports as % of GDP)



LABOUR FORCE

Labour force by gender in 2019

(as % of total labour force, all sectors)



OTHER INDICATORS

Maritime transport indicators

	2005	2010	2015	2019
Merchant fleet, national flag (thousands of DWT)	211	369	103	106
Liner shipping connectivity index (maximum 2006 = 100 for China)	..	17.24	22.90	34.16
Container port throughput (TEU)	..	606 000	767 000	798 200

0.005 %

Share of the total world merchant fleet in 2019

Information economy indicators

(as % of)

	2005	2010	2015	2019
Share of ICT goods, % of total exports	3.24	1.29	1.78	..
Share of ICT goods, % of total imports	6.86	4.26	4.40	..
Share of workforce involved in the ICT sector

JORDAN

Source: UNCTADstat (<http://unctadstat.unctad.org>)

Notes:

- 1 Land area refers to the total area of a country excluding area under inland water bodies. It differs from the country area, that includes area under inland water bodies, but excludes offshore territorial waters.
- 2 Statistics presented correspond to the 6th edition of the IMF Balance of Payments and International Investment Position Manual (BPM6, 2009).
- e Estimated.
- j Asset/liability basis.
- n Estimated. Data refers to 2016.

Symbols for missing values:

- 0 Zero means that the amount is nil or negligible
- .. Not available or not separately reported
- Not applicable
- ... Not available, including no quotation
- # Non-relevant calculation
- Not publishable
- *** Negative accumulation of flows; Value included in regional and global totals

Abbreviations & acronyms:

- DWT: Dead weight tons
- FDI: Foreign direct investment
- GDP: Gross domestic product
- ICT: Information and communication technology
- TEU: Twenty foot equivalent unit
- US\$: United States dollar

Disclaimer:

The designations employed and the presentation of the material on UNCTADstat do not imply the expression of any opinion whatsoever on the part of the secretariat of the United Nations concerning the legal status of any country, territory, city or area, or of its authorities, or concerning the delimitation of its frontiers or boundaries.

Where the designations "economy" or "country or area" appear in texts or tables, they cover regions, countries, territories, cities or areas.

UNCTAD strives for the highest level of accuracy and is committed to promptly correcting any errors on its part. It does not guarantee or make any express or implied representations regarding the accuracy, reliability, correctness, fitness for use for a particular purpose, or otherwise, whatsoever, of any of the tables in UNCTADstat.

Generation date: 06 November 2020