

GENERAL PROFILE: IRAN (ISLAMIC REPUBLIC OF)

GENERAL INFORMATION FOR 2017

Population
81.163 Millions

Exchange rate
33 226.298 IRR/US\$

GDP
460 976 Millions current US\$

Land area ¹
(n) 1 628 760 km²

CPI growth
10.48 %

GDP growth
3.76 %

INTERNATIONAL MERCHANDISE TRADE

Total merchandise trade

(millions of US\$)

| | 2005 | 2010 | 2015 | 2017 |
|---------------------------|--------|---------|--------|--------|
| Merchandise exports | 56 252 | 101 316 | 70 275 | 92 764 |
| Merchandise imports | 40 041 | 65 404 | 44 937 | 49 499 |
| Merchandise trade balance | 16 211 | 35 912 | 25 338 | 43 265 |

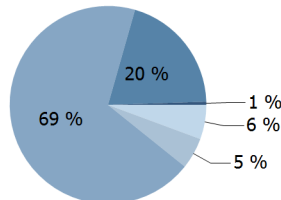
+27.2 %

Merchandise exports
growth rate in 2017

Export structure by product group in 2017

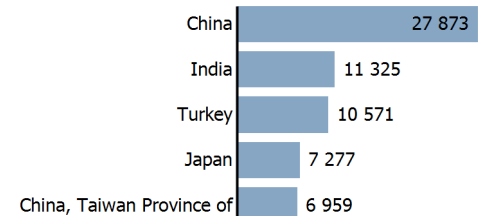
(as % of total exports)

- All food items
- Ores and metals
- Fuels
- Manufactured goods
- Other



Top 5 partners in 2017

(exports, millions of US\$)



INTERNATIONAL TRADE IN SERVICES

Total trade in services ²

(millions of US\$)

| | 2005 | 2010 | 2015 | 2017 |
|------------------------|--------|---------|--------|------------|
| Services exports | 4 999 | 8 853 | 11 085 | (e) 10 106 |
| Services imports | 10 840 | 18 893 | 15 872 | (e) 16 731 |
| Services trade balance | -5 841 | -10 040 | -4 787 | (e) -6 625 |

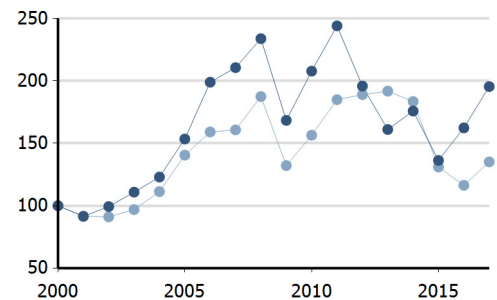
Services exports by main category ²

(as % of total services)

| | 2005 | 2010 | 2015 | 2017 |
|----------------|------|------|----------|------|
| Transport | 46.5 | 43.7 | 35.5 | - |
| Travel | 15.8 | 27.5 | 39.6 | - |
| Other services | 37.6 | 28.8 | (e) 25.0 | - |

TRADE INDICES

- Terms of trade index
- Purchasing power index of exports



ECONOMIC TRENDS

Economic indicators

(millions of US\$ unless otherwise specified)

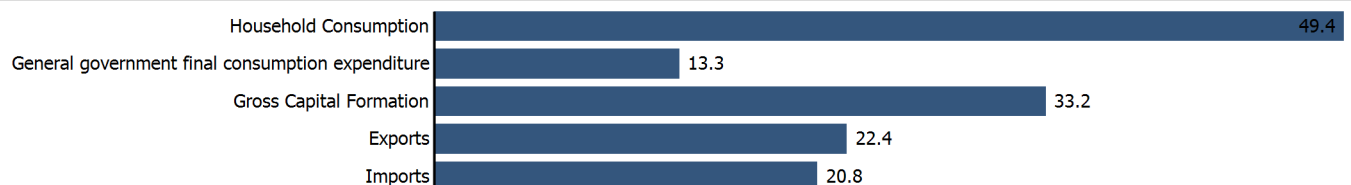
| | 2005 | 2010 | 2015 | 2017 |
|-----------------------------------|-----------|------------|------------|------------|
| GDP, current | 226 452 | 491 099 | 393 436 | 460 976 |
| GDP per capita, current US\$ | 3 216 | 6 586 | 4 958 | 5 680 |
| Real GDP growth, y-on-y, % | 3.19 | 5.80 | -1.32 | 3.76 |
| Current account balance, % of GDP | 6.80 | 5.61 | (e) 0.31 | (e) 4.00 |
| Exchange rate (/US\$) | 8 963.959 | 10 254.176 | 29 011.491 | 33 226.298 |

+3.8 %

Gross domestic product
growth rate in 2017

GDP by expenditure in 2016

(as % of total GDP)



IRAN (ISLAMIC REPUBLIC OF)

FDI AND EXTERNAL FINANCIAL RESOURCES

Financial flows

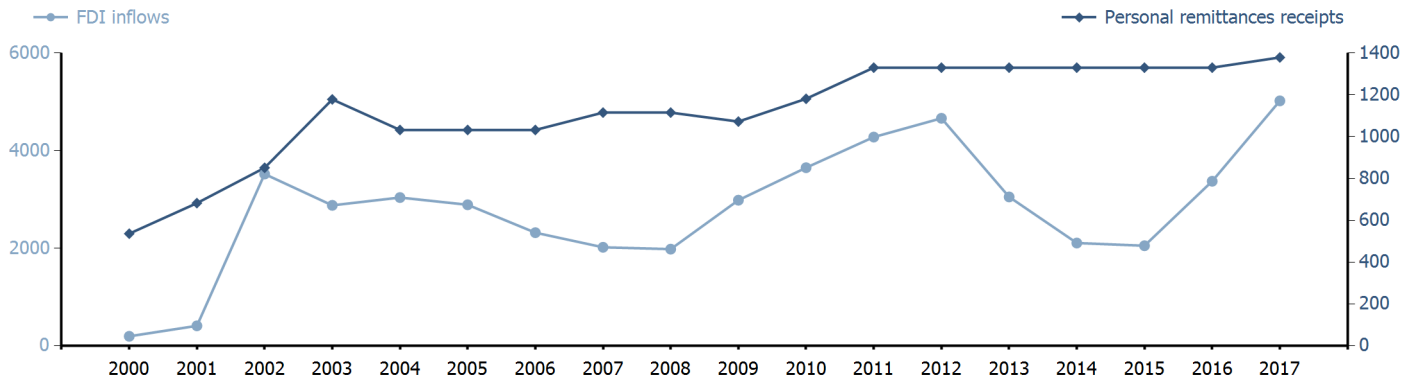
(millions of US\$ unless otherwise specified)

| | 2005 | 2010 | 2015 | 2017 |
|--------------------------------|----------|----------|----------|----------|
| FDI inflows | 2 889.19 | 3 648.97 | 2 050.00 | 5 019.00 |
| FDI outflows | 414.56 | 238.96 | 119.69 | .. |
| Personal remittances, % of GDP | 0.46 | 0.24 | 0.34 | 0.30 |

FDI outflows as % of GDP in 2017

Financial flows trends

(millions of US\$)



TRADE IN GOODS AND SERVICES

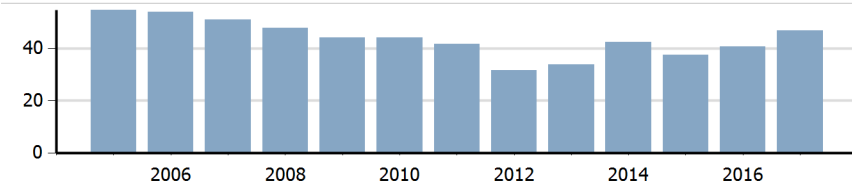
Trade balance indicators ²

(as % and index)

| | 2005 | 2010 | 2015 | 2017 |
|-----------------------|-------|-------|-------|-----------|
| Balance, % of GDP | 6.76 | 5.56 | 0.14 | (e) 4.84 |
| Balance, % of imports | 28.22 | 28.92 | 0.77 | (e) 23.03 |
| Normalized balance | 0.124 | 0.126 | 0.004 | (e) 0.103 |

Trade openness ²

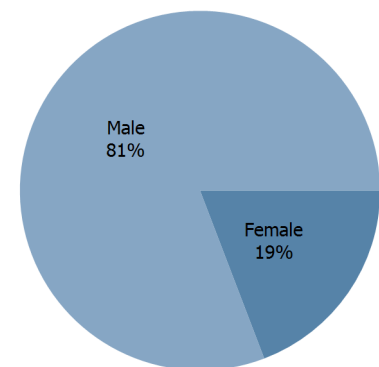
(sum of imports and exports as % of GDP)



LABOUR FORCE

Labour force by gender in 2017

(as % of total labour force, all sectors)



OTHER INDICATORS

Maritime transport indicators

| | 2005 | 2010 | 2015 | 2017 |
|--|-------|-----------|-----------|-----------|
| Merchant fleet, national flag (thousands of DWT) | 9 114 | 1 333 | 4 548 | 6 598 |
| Liner shipping connectivity index (maximum 2004 = 100 for China) | 14.23 | 30.73 | 11.91 | 40.63 |
| Container port throughput (TEU) | .. | 3 045 500 | 2 165 250 | 3 091 000 |

0.354 %

Share of the total world merchant fleet in 2017

Information economy indicators

(as % of)

| | 2005 | 2010 | 2015 | 2017 |
|---|------|------|------|------|
| Share of ICT goods, % of total exports | 0.03 | 0.04 | .. | .. |
| Share of ICT goods, % of total imports | 4.57 | 3.63 | .. | .. |
| Share of workforce involved in the ICT sector | .. | .. | .. | .. |

IRAN (ISLAMIC REPUBLIC OF)

Source: UNCTADstat (<http://unctadstat.unctad.org>)

Notes:

- 1 Land area refers to the total area of a country excluding area under inland water bodies. It differs from the country area, that includes area under inland water bodies, but excludes offshore territorial waters.
- 2 Statistics presented correspond to the 6th edition of the IMF Balance of Payments and International Investment Position Manual (BPM6, 2009).
- e Estimated.
- n Estimated. Data refers to 2016.

Symbols for missing values:

- 0 Zero means that the amount is nil or negligible
- .. Not available or not separately reported
- _ Not applicable
- ... Not available, including no quotation
- # Non-relevant calculation
- Not publishable
- *** Negative accumulation of flows; Value included in regional and global totals

Abbreviations & acronyms:

- DWT: Dead weight tons
- FDI: Foreign direct investment
- GDP: Gross domestic product
- ICT: Information and communication technology
- TEU: Twenty foot equivalent unit
- US\$: United States dollar

Disclaimer:

The designations employed and the presentation of the material on UNCTADstat do not imply the expression of any opinion whatsoever on the part of the secretariat of the United Nations concerning the legal status of any country, territory, city or area, or of its authorities, or concerning the delimitation of its frontiers or boundaries.

Where the designations "economy" or "country or area" appear in texts or tables, they cover regions, countries, territories, cities or areas.

UNCTAD strives for the highest level of accuracy and is committed to promptly correcting any errors on its part. It does not guarantee or make any express or implied representations regarding the accuracy, reliability, correctness, fitness for use for a particular purpose, or otherwise, whatsoever, of any of the tables in UNCTADstat.

Generation date: 16 April 2019