

GENERAL PROFILE: GREENLAND

GENERAL INFORMATION FOR 2017

Population
0.056 Millions

Exchange rate
6.603 DKK/US\$

GDP
2 790 Millions current US\$

Land area ¹
(n) 410 450 km²

CPI growth
-

GDP growth
0.99 %

INTERNATIONAL MERCHANDISE TRADE

Total merchandise trade

(millions of US\$)

	2005	2010	2015	2017
Merchandise exports	402	380	406	563
Merchandise imports	593	808	667	711
Merchandise trade balance	-190	-428	-260	-148

-2.1 %

Merchandise exports
growth rate in 2017

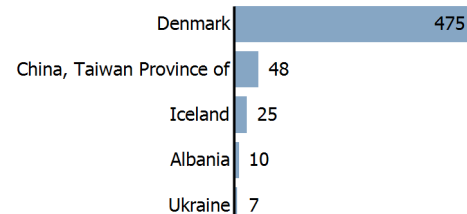
Export structure by product group in 2017

(as % of total exports)



Top 5 partners in 2017

(exports, millions of US\$)



INTERNATIONAL TRADE IN SERVICES

Total trade in services ²

(millions of US\$)

	2005	2010	2015	2017
Services exports	-	-	-	-
Services imports	-	-	-	-
Services trade balance	-	-	-	-

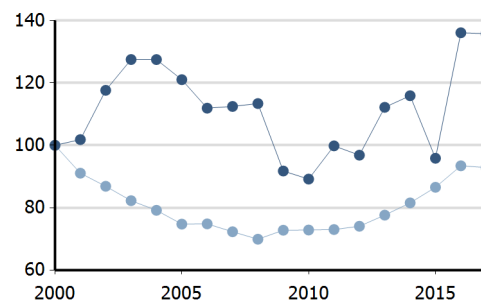
Services exports by main category ²

(as % of total services)

	2005	2010	2015	2017
Transport
Travel
Other services

TRADE INDICES

— Terms of trade index
— Purchasing power index of exports



ECONOMIC TRENDS

Economic indicators

(millions of US\$ unless otherwise specified)

	2005	2010	2015	2017
GDP, current	1 850	2 503	2 499	2 790
GDP per capita, current US\$	32 481	44 196	44 329	49 398
Real GDP growth, y-on-y, %	4.99	1.74	-2.53	0.99
Current account balance, % of GDP
Exchange rate (/US\$)	5.997	5.624	6.728	6.603

+1.0 %

Gross domestic product
growth rate in 2017

GDP by expenditure in 2017

(as % of total GDP)



GREENLAND

FDI AND EXTERNAL FINANCIAL RESOURCES



Financial flows

(millions of US\$ unless otherwise specified)

	2005	2010	2015	2017
FDI inflows
FDI outflows
Personal remittances, % of GDP

FDI outflows as % of GDP in 2017

Financial flows trends

(millions of US\$)

No data available

TRADE IN GOODS AND SERVICES



Trade balance indicators ²

(as % and index)

	2005	2010	2015	2017
Balance, % of GDP	-	-	-	-
Balance, % of imports	-	-	-	-
Normalized balance	-	-	-	-

Trade openness ²

(sum of imports and exports as % of GDP)

No data available

LABOUR FORCE

Labour force by gender in 2017

(as % of total labour force, all sectors)

No data available

OTHER INDICATORS



Maritime transport indicators

	2005	2010	2015	2017
Merchant fleet, national flag (thousands of DWT)	2	2
Liner shipping connectivity index (maximum 2006 = 100 for China)	2.34	2.11
Container port throughput (TEU)

0 %

Share of the total world merchant fleet in 2017

Information economy indicators

(as % of)

	2005	2010	2015	2017
Share of ICT goods, % of total exports	0.12	0.11	0.09	..
Share of ICT goods, % of total imports	5.56	6.14	4.37	..
Share of workforce involved in the ICT sector

GREENLAND

Source: UNCTADstat (<http://unctadstat.unctad.org>)

Notes:

- 1 Land area refers to the total area of a country excluding area under inland water bodies. It differs from the country area, that includes area under inland water bodies, but excludes offshore territorial waters.
- 2 Statistics presented correspond to the 6th edition of the IMF Balance of Payments and International Investment Position Manual (BPM6, 2009).
- n Estimated. Data refers to 2016.

Symbols for missing values:

- 0 Zero means that the amount is nil or negligible
- .. Not available or not separately reported
- Not applicable
- ... Not available, including no quotation
- # Non-relevant calculation
- Not publishable
- *** Negative accumulation of flows; Value included in regional and global totals

Abbreviations & acronyms:

- DWT: Dead weight tons
- FDI: Foreign direct investment
- GDP: Gross domestic product
- ICT: Information and communication technology
- TEU: Twenty foot equivalent unit
- US\$: United States dollar

Disclaimer:

The designations employed and the presentation of the material on UNCTADstat do not imply the expression of any opinion whatsoever on the part of the secretariat of the United Nations concerning the legal status of any country, territory, city or area, or of its authorities, or concerning the delimitation of its frontiers or boundaries.

Where the designations "economy" or "country or area" appear in texts or tables, they cover regions, countries, territories, cities or areas.

UNCTAD strives for the highest level of accuracy and is committed to promptly correcting any errors on its part. It does not guarantee or make any express or implied representations regarding the accuracy, reliability, correctness, fitness for use for a particular purpose, or otherwise, whatsoever, of any of the tables in UNCTADstat.

Generation date: 11 July 2019