

## GENERAL PROFILE: GAMBIA

### GENERAL INFORMATION FOR 2021

**Population**  
2.640 Millions

**Exchange rate**  
51.484 GMD/US\$

**GDP**  
2 013 Millions current US\$

**Land area<sup>1</sup>**  
(q) 10 120 km<sup>2</sup>

**CPI growth**  
7.37 %

**GDP growth**  
4.80 %

### INTERNATIONAL MERCHANDISE TRADE

#### Total merchandise trade

(millions of US\$)

	2005	2010	2015	2021
Merchandise exports	7	68	115	32
Merchandise imports	260	285	(e) 420	607
Merchandise trade balance	-252	-217	(e) -306	-576

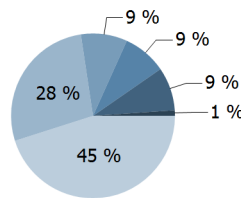
**-48.1 %**

Merchandise exports growth rate in 2021

#### Export structure by product group in 2021

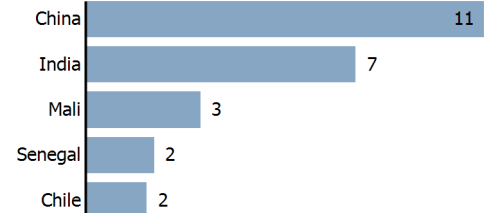
(as % of total exports)

- All food items
- Agricultural raw materials
- Ores and metals
- Fuels
- Manufactured goods
- Other



#### Top 5 partners in 2021

(exports, millions of US\$)



### INTERNATIONAL TRADE IN SERVICES

#### Total trade in services<sup>2</sup>

(millions of US\$)

	2005	2010	2015	2021
Services exports	82	131	107	104
Services imports	47	77	65	119
Services trade balance	35	54	42	-15

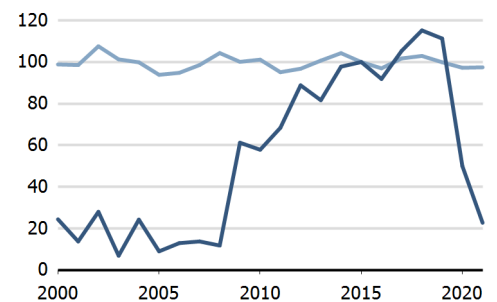
#### Services exports by main category<sup>2</sup>

(as % of total services)

	2005	2010	2015	2021
Transport	19.5	28.9	19.1	37.1
Travel	70.8	56.4	78.2	55.3
Other services	9.8	14.8	2.7	7.7

### TRADE INDICES

- Terms of trade index
- Purchasing power index of exports



### ECONOMIC TRENDS

#### Economic indicators

(millions of US\$ unless otherwise specified)

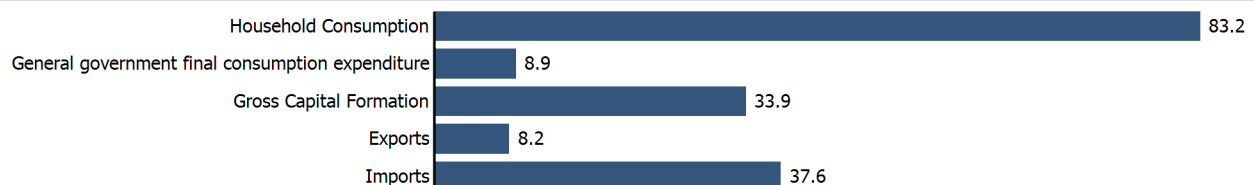
	2005	2010	2015	2021
GDP, current	1 028	1 543	1 378	2 013
GDP per capita, current US\$	619	797	612	763
Real GDP growth, y-on-y, %	-2.35	5.91	4.06	4.80
Current account balance, % of GDP	-4.22	1.13	-3.90	-4.67
Exchange rate (/US\$)	28.575	28.012	42.506	51.484

**+4.8 %**

Gross domestic product growth rate in 2021

#### GDP by expenditure in 2020

(as % of total GDP)



# GAMBIA

## FDI AND EXTERNAL FINANCIAL RESOURCES

### Financial flows

(millions of US\$ unless otherwise specified)

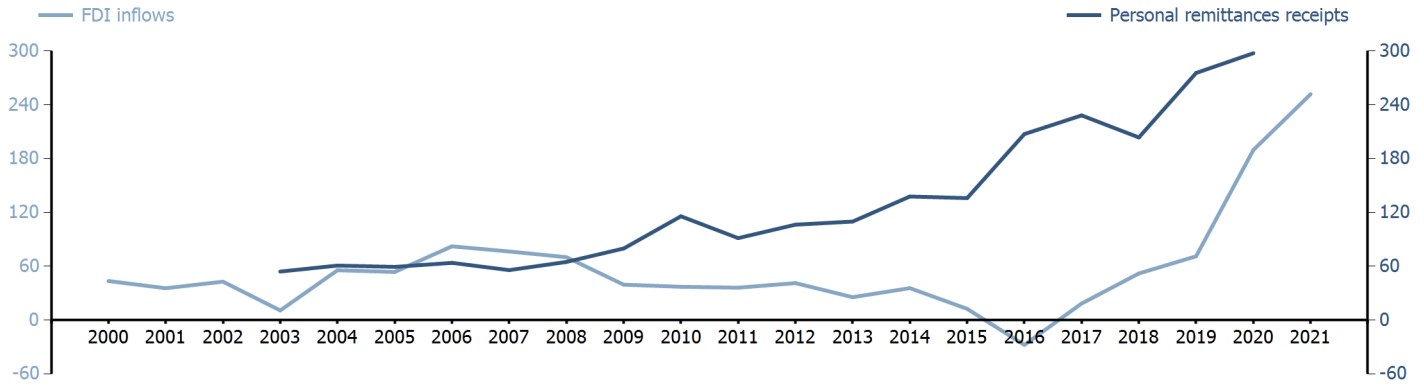
	2005	2010	2015	2021
FDI inflows	53.65	37.12	12.50	251.82
FDI outflows	..	..	-22.80	-3.39
Personal remittances, % of GDP	5.77	7.50	9.87	..

**-0.2 %**

FDI outflows as % of GDP in 2021

### Financial flows trends

(millions of US\$)



## TRADE IN GOODS AND SERVICES

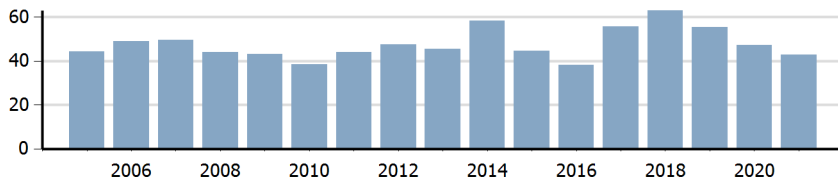
### Trade balance indicators<sup>2</sup>

(as % and index)

	2005	2010	2015	2021
Balance, % of GDP	-8.07	-3.37	-13.38	-29.34
Balance, % of imports	-30.78	-16.13	-46.22	-81.35
Normalized balance	-0.182	-0.088	-0.301	-0.686

### Trade openness<sup>2</sup>

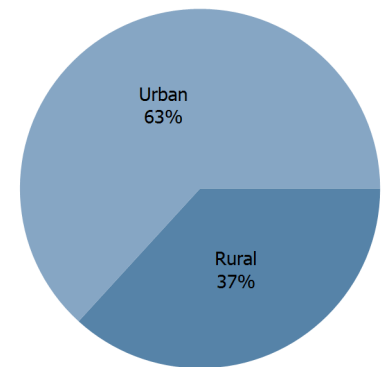
(sum of imports and exports as % of GDP)



## LIVING AREA

### Population by living area in 2021

(% of population)



## OTHER INDICATORS

### Maritime transport indicators

	2005	2010	2015	2021
Merchant fleet, national flag (thousands of DWT)	12	12	3	5
Liner shipping connectivity index (maximum 2006 = 100 for China)	..	6.43	10.24	6.33
Container port throughput (TEU)	..	-	-	..

**0 %**

Share of the total world merchant fleet in 2021

### Information economy indicators

(as % of)

	2005	2010	2015	2021
Share of ICT goods, % of total exports	0.40	0.12	0.01	..
Share of ICT goods, % of total imports	4.98	1.78	1.13	..
Share of workforce involved in the ICT sector	..	..	..	..

# GAMBIA

Source: UNCTADstat (<http://unctadstat.unctad.org>)

## Notes:

- 1 Land area refers to the total area of a country excluding area under inland water bodies. It differs from the country area, that includes area under inland water bodies, but excludes offshore territorial waters.
- 2 Statistics presented correspond to the 6th edition of the IMF Balance of Payments and International Investment Position Manual (BPM6, 2009).
- e Estimated.
- q Estimated. Data refers to 2020.

## Symbols for missing values:

- 0 Zero means that the amount is nil or negligible
- .. Not available or not separately reported
- Not applicable
- ... Not available, including no quotation
- # Non-relevant calculation
- Not publishable
- \*\*\* Negative accumulation of flows; Value included in regional and global totals

## Abbreviations & acronyms:

- DWT: Dead weight tons
- FDI: Foreign direct investment
- GDP: Gross domestic product
- ICT: Information and communication technology
- TEU: Twenty foot equivalent unit
- US\$: United States dollar

## Disclaimer:

The designations employed and the presentation of the material on UNCTADstat do not imply the expression of any opinion whatsoever on the part of the secretariat of the United Nations concerning the legal status of any country, territory, city or area, or of its authorities, or concerning the delimitation of its frontiers or boundaries.

Where the designations "economy" or "country or area" appear in texts or tables, they cover regions, countries, territories, cities or areas.

UNCTAD strives for the highest level of accuracy and is committed to promptly correcting any errors on its part. It does not guarantee or make any express or implied representations regarding the accuracy, reliability, correctness, fitness for use for a particular purpose, or otherwise, whatsoever, of any of the tables in UNCTADstat.

Generation date: 20 October 2022