

GENERAL PROFILE: ESTONIA

GENERAL INFORMATION FOR 2020

Population
1.327 Millions

Exchange rate
0.876 EUR/US\$

GDP
31 040 Millions current US\$

Land area¹
(n) 43 470 km²

CPI growth
-0.63 %

GDP growth
-2.90 %

INTERNATIONAL MERCHANDISE TRADE

Total merchandise trade

(millions of US\$)

	2005	2010	2015	2020
Merchandise exports	7 716	11 591	12 836	16 375
Merchandise imports	10 238	12 287	14 521	17 335
Merchandise trade balance	-2 523	-696	-1 685	-960

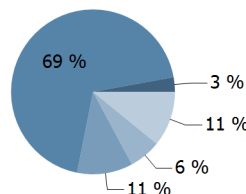
+1.6 %

Merchandise exports growth rate in 2020

Export structure by product group in 2020

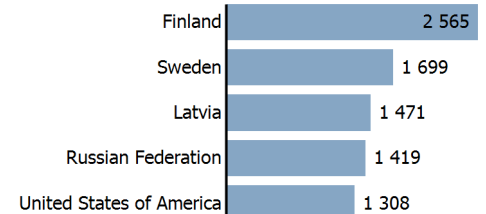
(as % of total exports)

- All food items
- Agricultural raw materials
- Fuels
- Manufactured goods
- Other



Top 5 partners in 2020

(exports, millions of US\$)



INTERNATIONAL TRADE IN SERVICES

Total trade in services²

(millions of US\$)

	2005	2010	2015	2020
Services exports	3 473	4 734	5 862	6 464
Services imports	2 257	2 946	3 987	6 224
Services trade balance	1 216	1 788	1 876	240

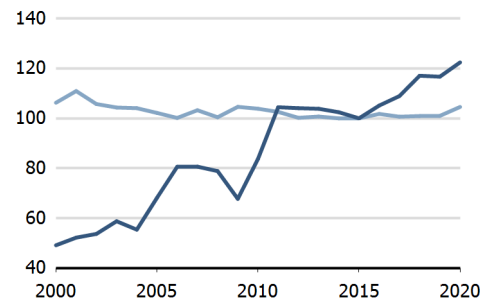
Services exports by main category²

(as % of total services)

	2005	2010	2015	2020
Transport	36.9	39.4	31.8	27.6
Travel	28.0	22.7	25.5	9.1
Other services	25.2	34.7	36.5	56.2

TRADE INDICES

- Terms of trade index
- Purchasing power index of exports



ECONOMIC TRENDS

Economic indicators

(millions of US\$ unless otherwise specified)

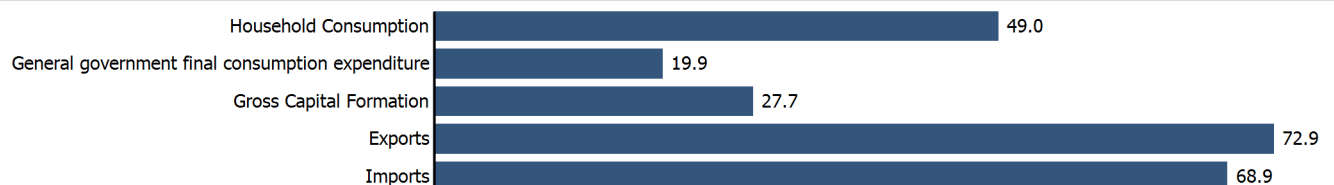
	2005	2010	2015	2020
GDP, current	14 096	19 694	23 049	31 040
GDP per capita, current US\$	10 398	14 784	17 523	23 399
Real GDP growth, y-on-y, %	9.49	2.69	1.84	-2.90
Current account balance, % of GDP	-8.64	1.73	1.75	..
Exchange rate (/US\$)	0.804	0.754	0.901	0.876

-2.9 %

Gross domestic product growth rate in 2020

GDP by expenditure in 2019

(as % of total GDP)



ESTONIA

FDI AND EXTERNAL FINANCIAL RESOURCES

Financial flows

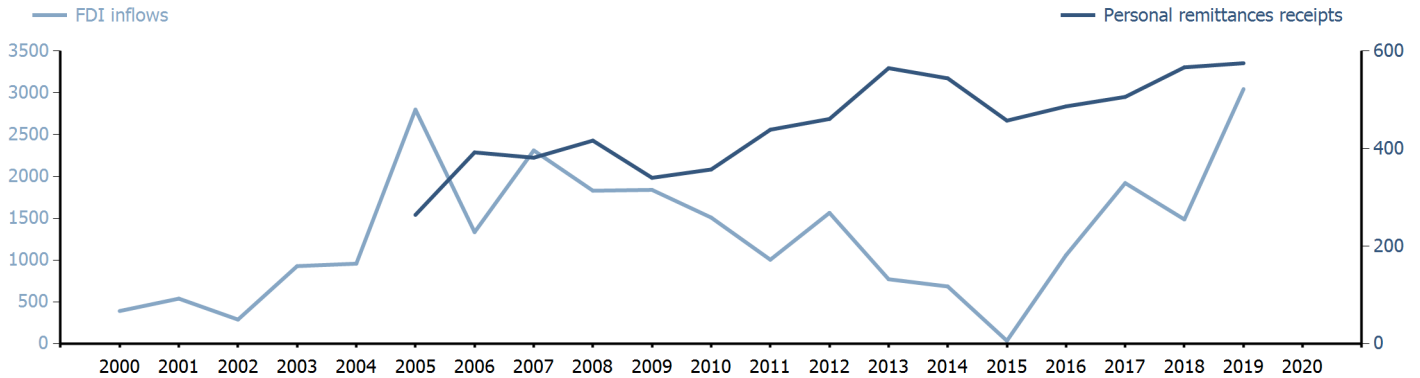
(millions of US\$ unless otherwise specified)

	2005	2010	2015	2020
FDI inflows	2 799.17	1 508.54	35.51	..
FDI outflows	662.83	167.13	182.10	..
Personal remittances, % of GDP	1.87	1.81	1.98	..

FDI outflows as % of GDP in 2020

Financial flows trends

(millions of US\$)



TRADE IN GOODS AND SERVICES

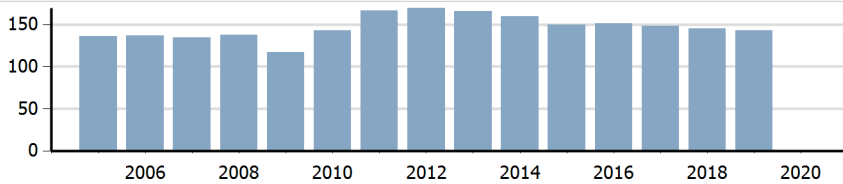
Trade balance indicators²

(as % and index)

	2005	2010	2015	2020
Balance, % of GDP	-5.06	6.31	3.91	..
Balance, % of imports	-7.17	9.27	5.35	..
Normalized balance	-0.037	0.044	0.026	..

Trade openness²

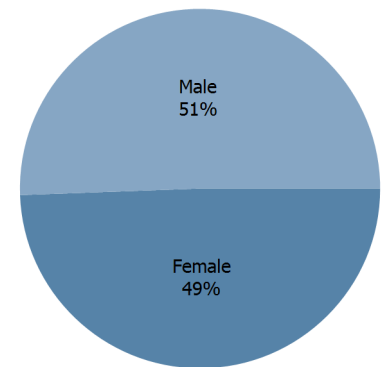
(sum of imports and exports as % of GDP)



LABOUR FORCE

Labour force by gender in 2020

(as % of total labour force, all sectors)



OTHER INDICATORS

Maritime transport indicators

	2005	2010	2015	2020
Merchant fleet, national flag (thousands of DWT)	164	99	68	80
Liner shipping connectivity index (maximum 2006 = 100 for China)	..	9.40	8.22	10.69
Container port throughput (TEU)	..	152 000	208 700	..

0.004 %

Share of the total world merchant fleet in 2020

Information economy indicators

(as % of)

	2005	2010	2015	2020
Share of ICT goods, % of total exports	17.04	7.95	11.91	..
Share of ICT goods, % of total imports	13.04	9.64	11.21	..
Share of workforce involved in the ICT sector	..	(o) 4.81

ESTONIA

Source: UNCTADstat (<http://unctadstat.unctad.org>)

Notes:

- 1 Land area refers to the total area of a country excluding area under inland water bodies. It differs from the country area, that includes area under inland water bodies, but excludes offshore territorial waters.
- 2 Statistics presented correspond to the 6th edition of the IMF Balance of Payments and International Investment Position Manual (BPM6, 2009).
- n Estimated. Data refers to 2016.
- o Number of persons employed in full time equivalent units. Total business economy includes repair of computers, personal and household goods; except financial and insurance activities.

Symbols for missing values:

- 0 Zero means that the amount is nil or negligible
- .. Not available or not separately reported
- Not applicable
- ... Not available, including no quotation
- # Non-relevant calculation
- Not publishable
- *** Negative accumulation of flows; Value included in regional and global totals

Abbreviations & acronyms:

- DWT: Dead weight tons
- FDI: Foreign direct investment
- GDP: Gross domestic product
- ICT: Information and communication technology
- TEU: Twenty foot equivalent unit
- US\$: United States dollar

Disclaimer:

The designations employed and the presentation of the material on UNCTADstat do not imply the expression of any opinion whatsoever on the part of the secretariat of the United Nations concerning the legal status of any country, territory, city or area, or of its authorities, or concerning the delimitation of its frontiers or boundaries.

Where the designations "economy" or "country or area" appear in texts or tables, they cover regions, countries, territories, cities or areas.

UNCTAD strives for the highest level of accuracy and is committed to promptly correcting any errors on its part. It does not guarantee or make any express or implied representations regarding the accuracy, reliability, correctness, fitness for use for a particular purpose, or otherwise, whatsoever, of any of the tables in UNCTADstat.

Generation date: 22 July 2021