

GENERAL PROFILE: EQUATORIAL GUINEA

GENERAL INFORMATION FOR 2023

Population
1.848 Millions

Exchange rate
..

GDP
12 117 Millions current US\$

Land area¹
(u) 28 050 km²

CPI growth
2.50 %

GDP growth
-5.69 %

INTERNATIONAL MERCHANDISE TRADE

Total merchandise trade

(millions of US\$)

	2005	2010	2015	2023
Merchandise exports	7 064	13 340	5 699	5 476
Merchandise imports	1 310	6 922	3 525	2 432
Merchandise trade balance	5 754	6 418	2 174	3 044

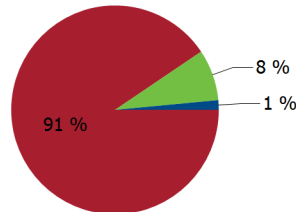
-25.8 %

Merchandise exports growth rate in 2023

Export structure by product group in 2023

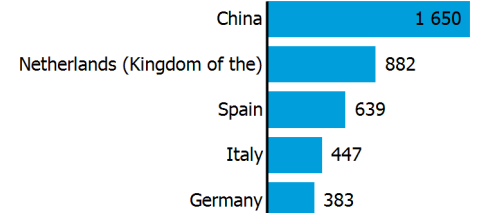
(as % of total exports)

■ Fuels
■ Manufactured goods
■ Other



Top 5 partners in 2023

(exports, millions of US\$)



INTERNATIONAL TRADE IN SERVICES

Total trade in services²

(millions of US\$)

	2005	2010	2015	2023
Services exports	36	78	277	(e) 146
Services imports	921	2 610	2 311	(e) 471
Services trade balance	-885	-2 532	-2 033	(e) -325

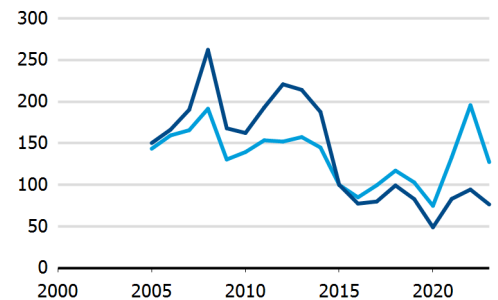
Services exports by main category²

(as % of total services)

	2005	2010	2015	2023
Transport	-	3.9	17.5	-
Travel	-	14.8	31.0	-
Other services	-	81.3	(e) 51.5	-

TRADE INDICES

— Terms of trade index
— Purchasing power index of exports



ECONOMIC TRENDS

Economic indicators

(millions of US\$ unless otherwise specified)

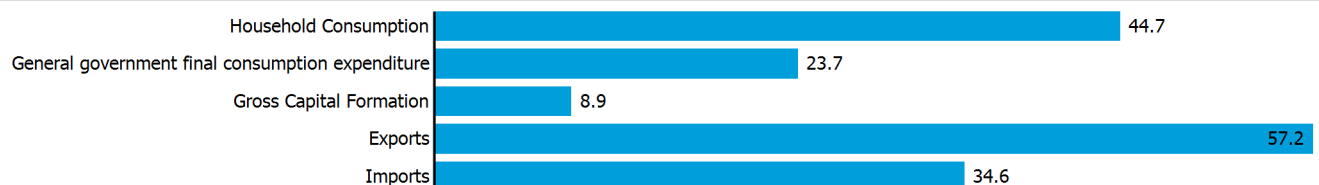
	2005	2010	2015	2023
GDP, current	8 523	16 314	13 185	12 117
GDP per capita, current US\$	8 997	13 720	9 069	6 558
Real GDP growth, y-on-y, %	8.90	-8.92	-9.11	-5.69
Current account balance, % of GDP	16.15	-20.20	(e) -9.84	(e) 1.63
Exchange rate (/US\$)	527.258	494.794	591.212	..

-5.7 %

Gross domestic product growth rate in 2023

GDP by expenditure in 2022

(as % of total GDP)



EQUATORIAL GUINEA

FDI AND EXTERNAL FINANCIAL RESOURCES

Financial flows

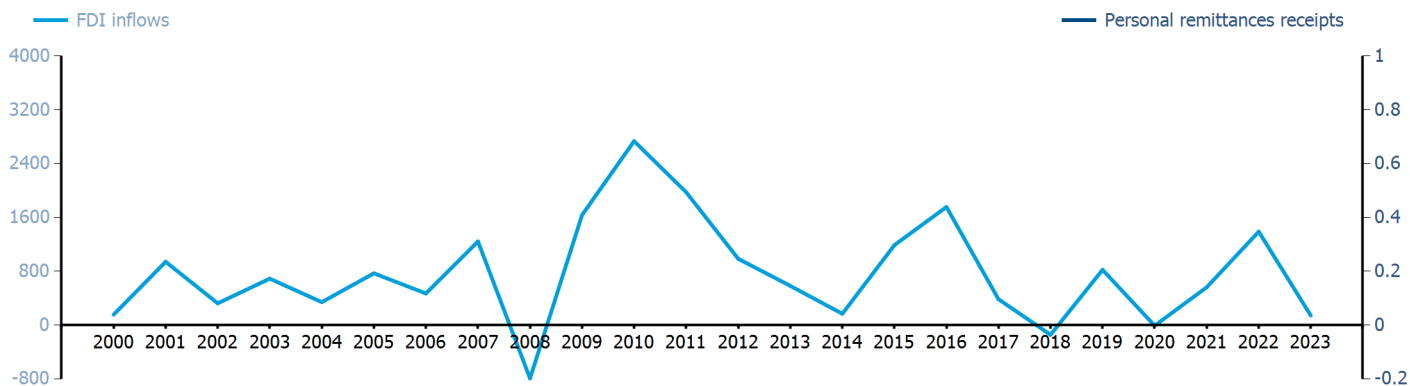
(millions of US\$ unless otherwise specified)

	2005	2010	2015	2023
FDI inflows	769.15	2 734.00	1 187.70	141.78
FDI outflows	1.27	..
Personal remittances, % of GDP

FDI outflows as % of GDP in 2023

Financial flows trends

(millions of US\$)



TRADE IN GOODS AND SERVICES

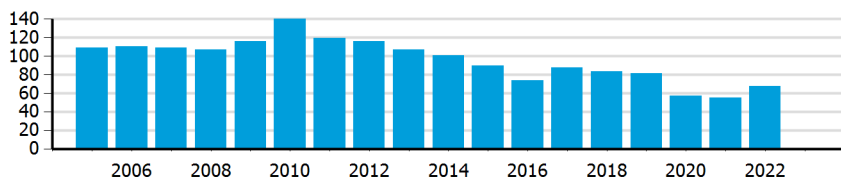
Trade balance indicators²

(as % and index)

	2005	2010	2015	2023
Balance, % of GDP	57.13	22.24	1.07	-
Balance, % of imports	218.23	37.75	2.42	-
Normalized balance	0.522	0.159	0.012	-

Trade openness²

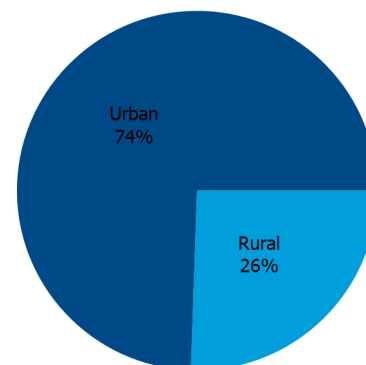
(sum of imports and exports as % of GDP)



LIVING AREA

Population by living area in 2023

(% of population)



OTHER INDICATORS

Maritime transport indicators

	2005	2010	2015	2023
Merchant fleet, national flag (thousands of DWT)	15	17	44	80
Container port throughput (TEU)	..	9 500	13 212	-

0.004 %

Share of the total world merchant fleet in 2023

Information economy indicators

(as % of)

	2005	2010	2015	2023
Share of ICT goods, % of total exports
Share of ICT goods, % of total imports
Share of workforce involved in the ICT sector

EQUATORIAL GUINEA

Source: UN Trade and Development, UNCTADstat (<https://unctadstat.unctad.org/datacentre>)

Notes:

- 1 Land area refers to the total area of a country excluding area under inland water bodies. It differs from the country area, that includes area under inland water bodies, but excludes offshore territorial waters.
- 2 Statistics presented correspond to the 6th edition of the IMF Balance of Payments and International Investment Position Manual (BPM6, 2009).
- e Estimated.
- u Estimated. Data refers to 2020.

Symbols for missing values:

- 0 Zero means that the amount is nil or negligible
- .. No value reported or collected
- Not applicable
- ... Not available, including no quotation
- # Non-relevant calculation
- Not publishable
- *** Negative accumulation of flows; Value included in regional and global totals

Abbreviations & acronyms:

- DWT: Dead weight tons
- FDI: Foreign direct investment
- GDP: Gross domestic product
- ICT: Information and communication technology
- TEU: Twenty foot equivalent unit
- US\$: United States dollar

Disclaimer:

The designations employed and the presentation of the material on the UNCTAD Data Hub do not imply the expression of any opinion whatsoever on the part of the secretariat of the United Nations concerning the legal status of any country, territory, city or area, or of its authorities, or concerning the delimitation of its frontiers or boundaries.

Where the designations "economy" or "country or area" appear in texts or tables, they cover regions, countries, territories, cities or areas.

UNCTAD strives for the highest level of accuracy and is committed to promptly correcting any errors on its part. It does not guarantee or make any express or implied representations regarding the accuracy, reliability, correctness, fitness for use for a particular purpose, or otherwise, whatsoever, of any of the tables in the UNCTAD Data Hub.

Generation date: 15 April 2025