

## GENERAL PROFILE: DOMINICA

### GENERAL INFORMATION FOR 2023

**Population**  
0.067 Millions

**Exchange rate**  
..

**GDP**  
651 Millions current US\$

**Land area<sup>1</sup>**  
(u) 750 km<sup>2</sup>

**CPI growth**  
3.46 %

**GDP growth**  
3.01 %

### INTERNATIONAL MERCHANDISE TRADE

#### Total merchandise trade

(millions of US\$)

	2005	2010	2015	2023
Merchandise exports	42	37	30	16
Merchandise imports	165	224	214	302
Merchandise trade balance	-124	-187	-184	-286

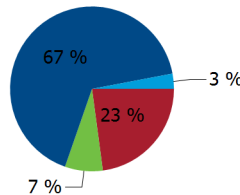
**-25.8 %**

Merchandise exports growth rate in 2023

#### Export structure by product group in 2023

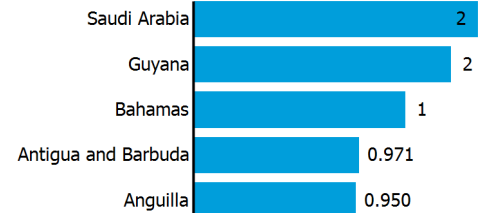
(as % of total exports)

- All food items
- Ores and metals
- Manufactured goods
- Other



#### Top 5 partners in 2023

(exports, millions of US\$)



### INTERNATIONAL TRADE IN SERVICES

#### Total trade in services<sup>2</sup>

(millions of US\$)

	2005	2010	2015	2023
Services exports	130	200	225	162
Services imports	85	127	131	149
Services trade balance	45	74	94	13

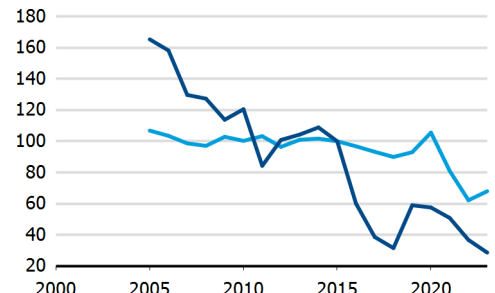
#### Services exports by main category<sup>2</sup>

(as % of total services)

	2005	2010	2015	2023
Transport	3.1	2.0	0.3	1.3
Travel	83.3	88.5	89.5	58.5
Other services	13.6	9.5	10.2	40.1

### TRADE INDICES

- Terms of trade index
- Purchasing power index of exports



### ECONOMIC TRENDS

#### Economic indicators

(millions of US\$ unless otherwise specified)

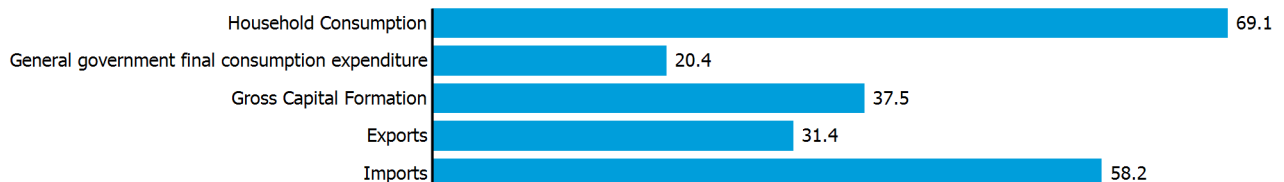
	2005	2010	2015	2023
GDP, current	364	494	541	651
GDP per capita, current US\$	5 299	7 172	7 680	9 786
Real GDP growth, y-on-y, %	0.66	0.67	-2.45	3.01
Current account balance, % of GDP	-17.29	-17.83	-7.08	-33.94
Exchange rate (/US\$)	2.700	2.700	2.700	..

**+3.0 %**

Gross domestic product growth rate in 2023

#### GDP by expenditure in 2022

(as % of total GDP)



# DOMINICA

## FDI AND EXTERNAL FINANCIAL RESOURCES

### Financial flows

(millions of US\$ unless otherwise specified)

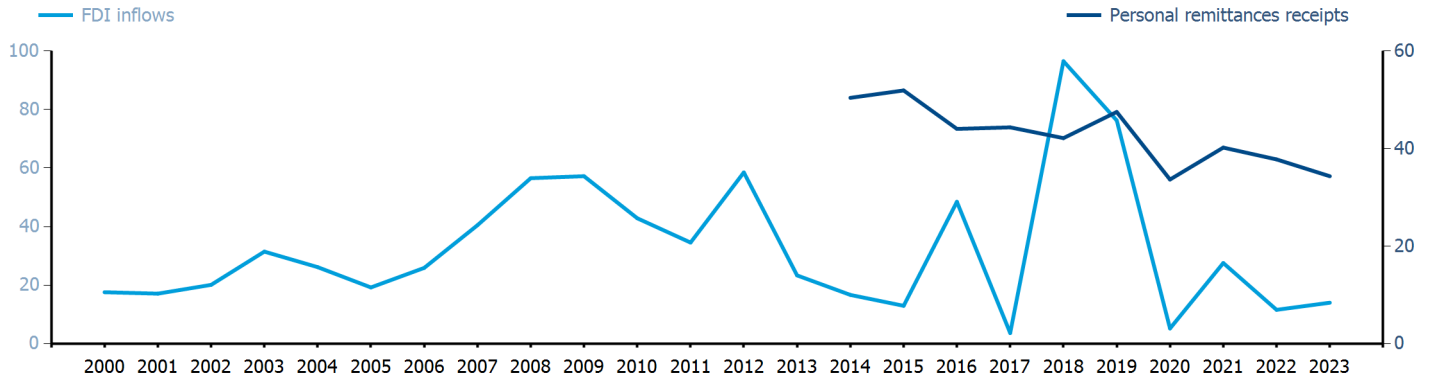
	2005	2010	2015	2023
FDI inflows	(k) 19.24	(k) 42.86	(k) 12.97	(k) 14.02
FDI outflows	..	..	(k) -17.26	(k) -0.80
Personal remittances, % of GDP	..	..	9.60	5.25

**-0.1 %**

FDI outflows as % of GDP in 2023

### Financial flows trends

(millions of US\$)



## TRADE IN GOODS AND SERVICES

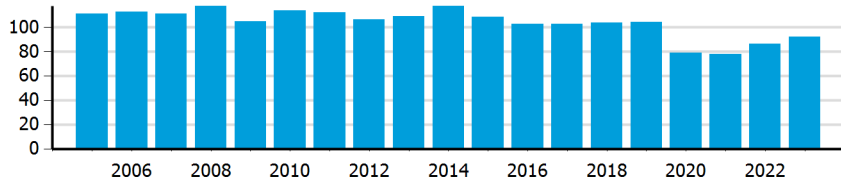
### Trade balance indicators<sup>2</sup>

(as % and index)

	2005	2010	2015	2023
Balance, % of GDP	-15.87	-18.93	-12.24	-35.19
Balance, % of imports	-25.02	-28.57	-20.27	-55.31
Normalized balance	-0.143	-0.167	-0.113	-0.382

### Trade openness<sup>2</sup>

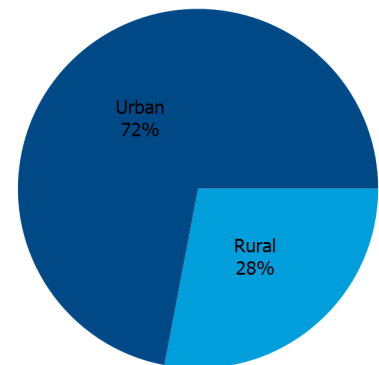
(sum of imports and exports as % of GDP)



## LIVING AREA

### Population by living area in 2023

(% of population)



## OTHER INDICATORS

### Maritime transport indicators

	2005	2010	2015	2023
Merchant fleet, national flag (thousands of DWT)	467	1 610	628	263
Container port throughput (TEU)	..	..	..	..

**0.012 %**

Share of the total world merchant fleet in 2023

### Information economy indicators

(as % of)

	2005	2010	2015	2023
Share of ICT goods, % of total exports	0.24	2.45	..	0.68
Share of ICT goods, % of total imports	8.29	4.79	..	3.11
Share of workforce involved in the ICT sector	..	..	..	..

# DOMINICA

Source: UN Trade and Development, UNCTADstat (<https://unctadstat.unctad.org/datacentre>)

## Notes:

- 1 Land area refers to the total area of a country excluding area under inland water bodies. It differs from the country area, that includes area under inland water bodies, but excludes offshore territorial waters.
- 2 Statistics presented correspond to the 6th edition of the IMF Balance of Payments and International Investment Position Manual (BPM6, 2009).
- k Asset/liability basis.
- u Estimated. Data refers to 2020.

## Symbols for missing values:

- 0 Zero means that the amount is nil or negligible
- .. No value reported or collected
- Not applicable
- ... Not available, including no quotation
- # Non-relevant calculation
- Not publishable
- \*\*\* Negative accumulation of flows; Value included in regional and global totals

## Abbreviations & acronyms:

- DWT: Dead weight tons
- FDI: Foreign direct investment
- GDP: Gross domestic product
- ICT: Information and communication technology
- TEU: Twenty foot equivalent unit
- US\$: United States dollar

## Disclaimer:

The designations employed and the presentation of the material on the UNCTAD Data Hub do not imply the expression of any opinion whatsoever on the part of the secretariat of the United Nations concerning the legal status of any country, territory, city or area, or of its authorities, or concerning the delimitation of its frontiers or boundaries.

Where the designations "economy" or "country or area" appear in texts or tables, they cover regions, countries, territories, cities or areas.

UNCTAD strives for the highest level of accuracy and is committed to promptly correcting any errors on its part. It does not guarantee or make any express or implied representations regarding the accuracy, reliability, correctness, fitness for use for a particular purpose, or otherwise, whatsoever, of any of the tables in the UNCTAD Data Hub.

Generation date: 15 April 2025