

GENERAL PROFILE: ANGOLA

GENERAL INFORMATION FOR 2020

Population
32.866 Millions

Exchange rate
578.259 AOA/US\$

GDP
59 093 Millions current US\$

Land area¹
(n) 1 246 700 km²

CPI growth
22.28 %

GDP growth
-4.20 %

INTERNATIONAL MERCHANDISE TRADE

Total merchandise trade

(millions of US\$)

	2005	2010	2015	2020
Merchandise exports	24 109	50 595	33 181	(e) 20 978
Merchandise imports	8 353	16 667	20 693	(e) 9 716
Merchandise trade balance	15 756	33 928	12 489	(e) 11 262

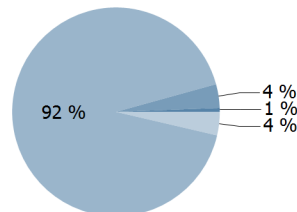
-39.6 %

Merchandise exports growth rate in 2020

Export structure by product group in 2020

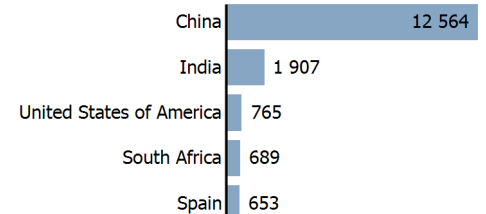
(as % of total exports)

- Ores and metals
- Fuels
- Manufactured goods
- Other



Top 5 partners in 2020

(exports, millions of US\$)



INTERNATIONAL TRADE IN SERVICES

Total trade in services²

(millions of US\$)

	2005	2010	2015	2020
Services exports	177	857	1 256	66
Services imports	6 791	(e) 18 754	17 276	5 580
Services trade balance	-6 614	(e) -17 897	-16 020	-5 514

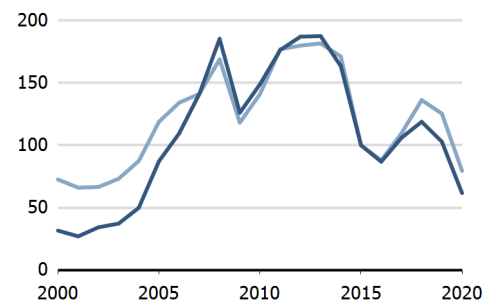
Services exports by main category²

(as % of total services)

	2005	2010	2015	2020
Transport	10.2	5.0	2.0	11.7
Travel	49.9	83.9	92.6	24.5
Other services	39.9	11.1	5.4	63.7

TRADE INDICES

- Terms of trade index
- Purchasing power index of exports



ECONOMIC TRENDS

Economic indicators

(millions of US\$ unless otherwise specified)

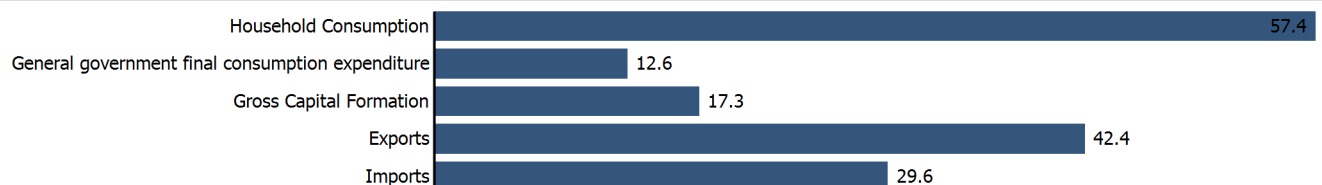
	2005	2010	2015	2020
GDP, current	36 971	83 799	116 194	59 093
GDP per capita, current US\$	1 902	3 588	4 167	1 798
Real GDP growth, y-on-y, %	15.03	4.86	0.94	-4.20
Current account balance, % of GDP	13.90	8.96	-8.84	..
Exchange rate (/US\$)	87.159	91.906	120.061	578.259

-4.2 %

Gross domestic product growth rate in 2020

GDP by expenditure in 2019

(as % of total GDP)



ANGOLA

FDI AND EXTERNAL FINANCIAL RESOURCES

Financial flows

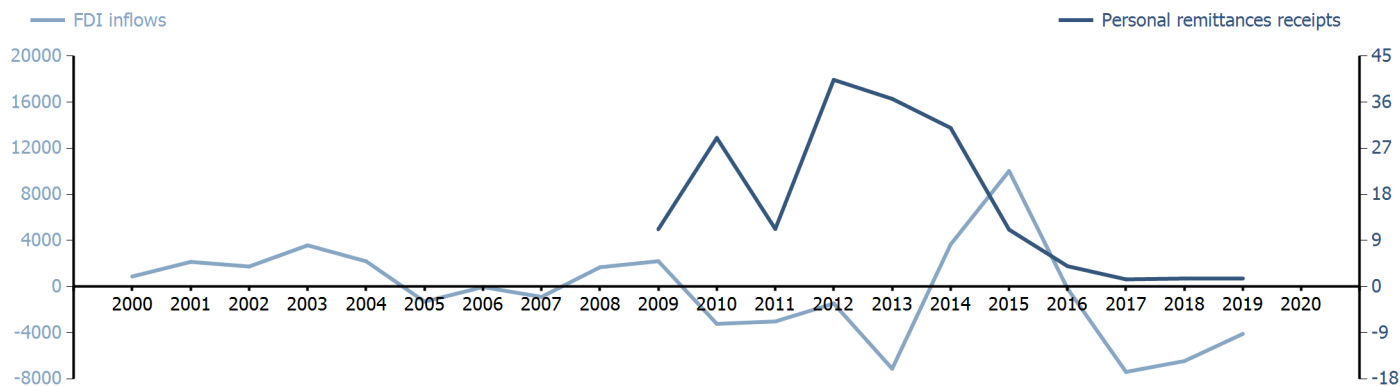
(millions of US\$ unless otherwise specified)

	2005	2010	2015	2020
FDI inflows	-1 303.84	-3 227.21	10 028.22	..
FDI outflows	219.36	1 340.43	-784.87	..
Personal remittances, % of GDP	..	0.03	0.01	..

FDI outflows as % of GDP in 2020

Financial flows trends

(millions of US\$)



TRADE IN GOODS AND SERVICES

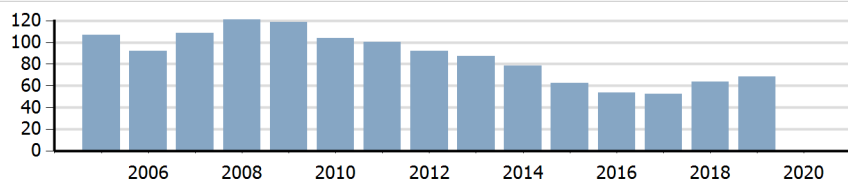
Trade balance indicators²

(as % and index)

	2005	2010	2015	2020
Balance, % of GDP	24.73	(e) 19.13	-3.04	..
Balance, % of imports	60.37	(e) 45.26	-9.30	..
Normalized balance	0.232	(e) 0.185	-0.049	..

Trade openness²

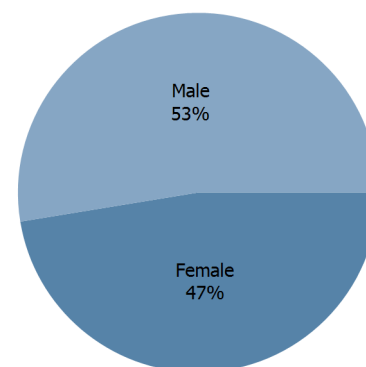
(sum of imports and exports as % of GDP)



LABOUR FORCE

Labour force by gender in 2020

(as % of total labour force, all sectors)



OTHER INDICATORS

Maritime transport indicators

	2005	2010	2015	2020
Merchant fleet, national flag (thousands of DWT)	35	52	321	317
Liner shipping connectivity index (maximum 2006 = 100 for China)	..	15.20	22.12	29.78
Container port throughput (TEU)	..	583 300	956 500	..

0.015 %

Share of the total world merchant fleet in 2020

Information economy indicators

(as % of)

	2005	2010	2015	2020
Share of ICT goods, % of total exports	0.02	..
Share of ICT goods, % of total imports	..	3.02	2.87	..
Share of workforce involved in the ICT sector

ANGOLA

Source: UNCTADstat (<http://unctadstat.unctad.org>)

Notes:

- 1 Land area refers to the total area of a country excluding area under inland water bodies. It differs from the country area, that includes area under inland water bodies, but excludes offshore territorial waters.
- 2 Statistics presented correspond to the 6th edition of the IMF Balance of Payments and International Investment Position Manual (BPM6, 2009).
- e Estimated.
- n Estimated. Data refers to 2016.

Symbols for missing values:

- 0 Zero means that the amount is nil or negligible
- .. Not available or not separately reported
- Not applicable
- ... Not available, including no quotation
- # Non-relevant calculation
- Not publishable
- *** Negative accumulation of flows; Value included in regional and global totals

Abbreviations & acronyms:

- DWT: Dead weight tons
- FDI: Foreign direct investment
- GDP: Gross domestic product
- ICT: Information and communication technology
- TEU: Twenty foot equivalent unit
- US\$: United States dollar

Disclaimer:

The designations employed and the presentation of the material on UNCTADstat do not imply the expression of any opinion whatsoever on the part of the secretariat of the United Nations concerning the legal status of any country, territory, city or area, or of its authorities, or concerning the delimitation of its frontiers or boundaries.

Where the designations "economy" or "country or area" appear in texts or tables, they cover regions, countries, territories, cities or areas.

UNCTAD strives for the highest level of accuracy and is committed to promptly correcting any errors on its part. It does not guarantee or make any express or implied representations regarding the accuracy, reliability, correctness, fitness for use for a particular purpose, or otherwise, whatsoever, of any of the tables in UNCTADstat.

Generation date: 22 July 2021