

## GENERAL PROFILE: UNITED KINGDOM

### GENERAL INFORMATION FOR 2020

**Population**  
68.145 Millions

**Exchange rate**  
0.780 GBP/US\$

**GDP**  
2 706 163 Millions current US\$

**Land area<sup>1</sup>**  
(n) 241 930 km<sup>2</sup>

**CPI growth**  
0.85 %

**GDP growth**  
-9.85 %

### INTERNATIONAL MERCHANDISE TRADE

#### Total merchandise trade

(millions of US\$)

	2005	2010	2015	2020
Merchandise exports	384 477	415 959	465 850	404 681
Merchandise imports	513 673	591 095	630 003	634 742
Merchandise trade balance	-129 196	-175 136	-164 153	-230 061

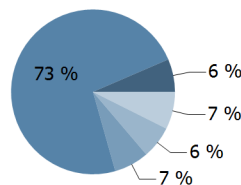
**-13.8 %**

Merchandise exports growth rate in 2020

#### Export structure by product group in 2020

(as % of total exports)

- All food items
- Ores and metals
- Fuels
- Manufactured goods
- Other



#### Top 5 partners in 2020

(exports, millions of US\$)

United States of America	57 722
Germany	41 178
Ireland	27 328
Netherlands	24 785
France	23 522

### INTERNATIONAL TRADE IN SERVICES

#### Total trade in services<sup>2</sup>

(millions of US\$)

	2005	2010	2015	2020
Services exports	247 024	289 618	369 229	342 439
Services imports	181 457	190 332	235 013	204 748
Services trade balance	65 567	99 286	134 215	137 691

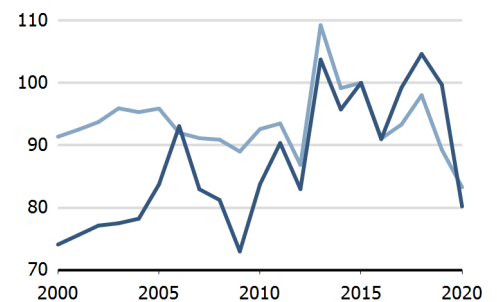
#### Services exports by main category<sup>2</sup>

(as % of total services)

	2005	2010	2015	2020
Transport	11.8	9.8	8.9	6.0
Travel	13.3	12.1	14.0	5.5
Other services	74.1	76.5	75.1	86.5

### TRADE INDICES

- Terms of trade index
- Purchasing power index of exports



### ECONOMIC TRENDS

#### Economic indicators

(millions of US\$ unless otherwise specified)

	2005	2010	2015	2020
GDP, current	2 532 804	2 481 580	2 932 785	2 706 163
GDP per capita, current US\$	41 851	38 955	44 363	39 712
Real GDP growth, y-on-y, %	2.96	2.07	2.36	-9.85
Current account balance, % of GDP	-1.97	-3.12	-5.02	-3.53
Exchange rate (/US\$)	0.550	0.647	0.655	0.780

**-9.8 %**

Gross domestic product growth rate in 2020

#### GDP by expenditure in 2019

(as % of total GDP)

Household Consumption	64.0
General government final consumption expenditure	19.1
Gross Capital Formation	18.3
Exports	31.2
Imports	32.6

# UNITED KINGDOM

## FDI AND EXTERNAL FINANCIAL RESOURCES

### Financial flows

(millions of US\$ unless otherwise specified)

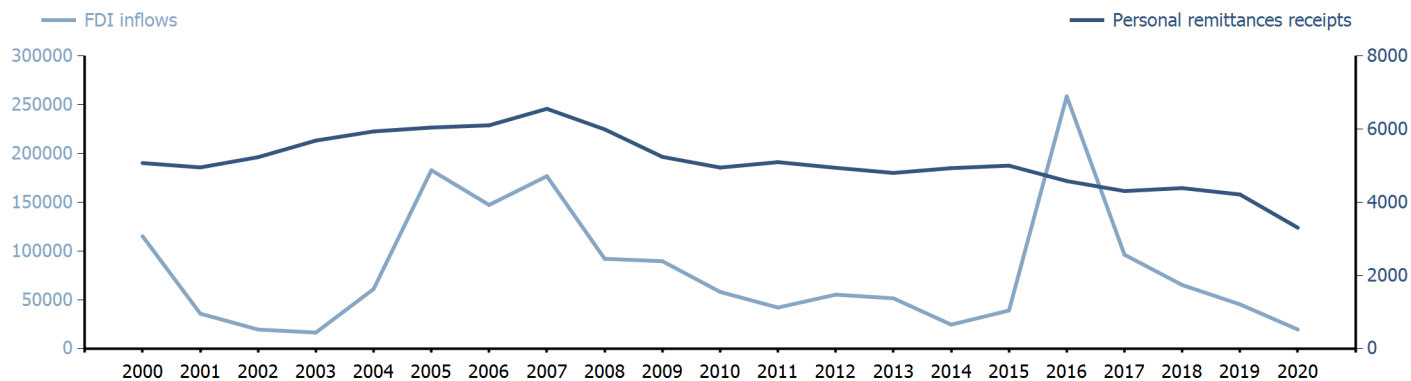
	2005	2010	2015	2020
FDI inflows	182 927.94	58 200.28	39 185.70	19 724.36
FDI outflows	88 560.32	48 091.80	-66 821.48	-33 408.97
Personal remittances, % of GDP	0.24	0.20	0.17	0.12

**-1.2 %**

FDI outflows as % of GDP in 2020

### Financial flows trends

(millions of US\$)



## TRADE IN GOODS AND SERVICES

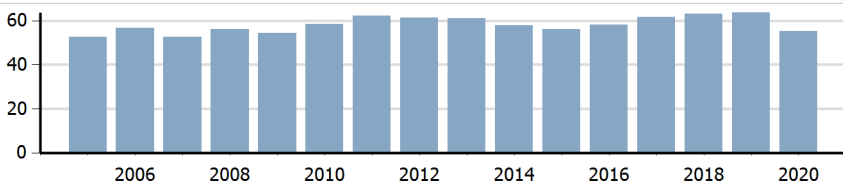
### Trade balance indicators<sup>2</sup>

(as % and index)

	2005	2010	2015	2020
Balance, % of GDP	-2.44	-1.94	-1.47	-0.36
Balance, % of imports	-8.86	-6.41	-5.11	-1.30
Normalized balance	-0.046	-0.033	-0.026	-0.007

### Trade openness<sup>2</sup>

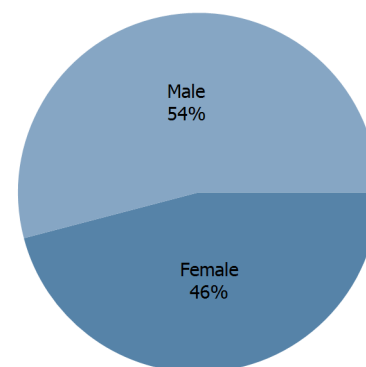
(sum of imports and exports as % of GDP)



## LABOUR FORCE

### Labour force by gender in 2020

(as % of total labour force, all sectors)



## OTHER INDICATORS

### Maritime transport indicators

	2005	2010	2015	2020
Merchant fleet, national flag (thousands of DWT)	23 161	36 887	38 897	36 189
Liner shipping connectivity index (maximum 2006 = 100 for China)	..	80.20	85.14	89.69
Container port throughput (TEU)	..	8 222 000	9 772 000	8 692 260

**1.747 %**

Share of the total world merchant fleet in 2020

### Information economy indicators

(as % of)

	2005	2010	2015	2020
Share of ICT goods, % of total exports	13.48	5.78	4.10	4.13
Share of ICT goods, % of total imports	12.86	9.49	8.29	8.23
Share of workforce involved in the ICT sector	..	(o) 6.02	..	..

# UNITED KINGDOM

Source: UNCTADstat (<http://unctadstat.unctad.org>)

## Notes:

- 1 Land area refers to the total area of a country excluding area under inland water bodies. It differs from the country area, that includes area under inland water bodies, but excludes offshore territorial waters.
- 2 Statistics presented correspond to the 6th edition of the IMF Balance of Payments and International Investment Position Manual (BPM6, 2009).
- n Estimated. Data refers to 2016.
- o Number of persons employed in full time equivalent units. Total business economy includes repair of computers, personal and household goods; except financial and insurance activities.

## Symbols for missing values:

- 0 Zero means that the amount is nil or negligible
- .. Not available or not separately reported
- Not applicable
- ... Not available, including no quotation
- # Non-relevant calculation
- Not publishable
- \*\*\* Negative accumulation of flows; Value included in regional and global totals

## Abbreviations & acronyms:

- DWT: Dead weight tons
- FDI: Foreign direct investment
- GDP: Gross domestic product
- ICT: Information and communication technology
- TEU: Twenty foot equivalent unit
- US\$: United States dollar

## Disclaimer:

The designations employed and the presentation of the material on UNCTADstat do not imply the expression of any opinion whatsoever on the part of the secretariat of the United Nations concerning the legal status of any country, territory, city or area, or of its authorities, or concerning the delimitation of its frontiers or boundaries.

Where the designations "economy" or "country or area" appear in texts or tables, they cover regions, countries, territories, cities or areas.

UNCTAD strives for the highest level of accuracy and is committed to promptly correcting any errors on its part. It does not guarantee or make any express or implied representations regarding the accuracy, reliability, correctness, fitness for use for a particular purpose, or otherwise, whatsoever, of any of the tables in UNCTADstat.

Generation date: 05 January 2022