

GENERAL PROFILE: UNITED ARAB EMIRATES

GENERAL INFORMATION FOR 2018

Population
9.631 Millions

Exchange rate
3.673 AED/US\$

GDP
424 667 Millions current US\$

Land area ¹
(n) 71 020 km²

CPI growth
3.07 %

GDP growth
1.70 %

INTERNATIONAL MERCHANDISE TRADE

Total merchandise trade

(millions of US\$)

	2005	2010	2015	2018
Merchandise exports	117 287	(e) 214 000	300 477	316 896
Merchandise imports	84 654	(e) 165 000	263 417	261 538
Merchandise trade balance	32 633	(e) 49 000	37 059	55 357

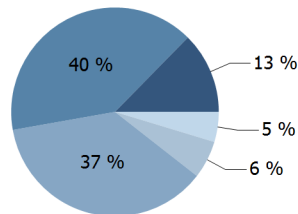
+1.1 %

Merchandise exports
growth rate in 2018

Export structure by product group in 2018

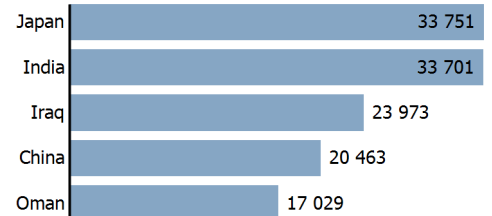
(as % of total exports)

- All food items
- Ores and metals
- Fuels
- Manufactured goods
- Other



Top 5 partners in 2018

(exports, millions of US\$)



INTERNATIONAL TRADE IN SERVICES

Total trade in services ²

(millions of US\$)

	2005	2010	2015	2018
Services exports	4 784	11 736	60 776	71 831
Services imports	19 367	42 100	81 879	72 294
Services trade balance	-14 584	-30 364	-21 103	-463

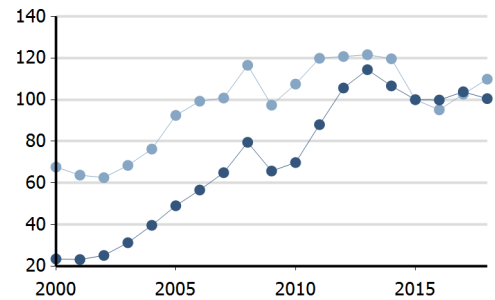
Services exports by main category ²

(as % of total services)

	2005	2010	2015	2018
Transport	22.1	20.9	38.5	39.4
Travel	67.3	73.1	28.8	29.8
Other services	10.6	6.0	32.7	30.8

TRADE INDICES

- Terms of trade index
- Purchasing power index of exports



ECONOMIC TRENDS

Economic indicators

(millions of US\$ unless otherwise specified)

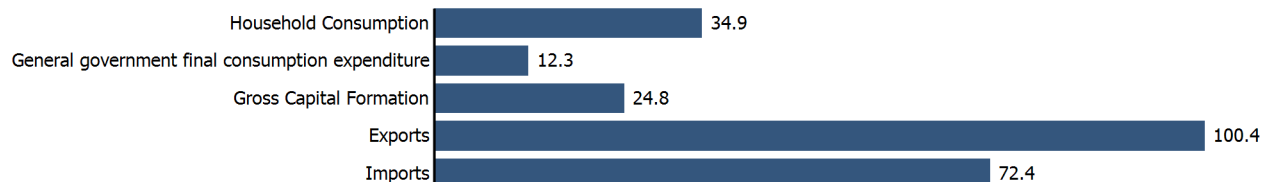
	2005	2010	2015	2018
GDP, current	182 978	289 787	358 135	424 667
GDP per capita, current US\$	39 880	33 893	38 663	44 094
Real GDP growth, y-on-y, %	4.86	1.64	5.06	1.70
Current account balance, % of GDP	13.00	4.21	4.90	(e) 6.60
Exchange rate (/US\$)	3.673	3.673	3.673	3.673

+1.7 %

Gross domestic product
growth rate in 2018

GDP by expenditure in 2017

(as % of total GDP)



UNITED ARAB EMIRATES

FDI AND EXTERNAL FINANCIAL RESOURCES

Financial flows

(millions of US\$ unless otherwise specified)

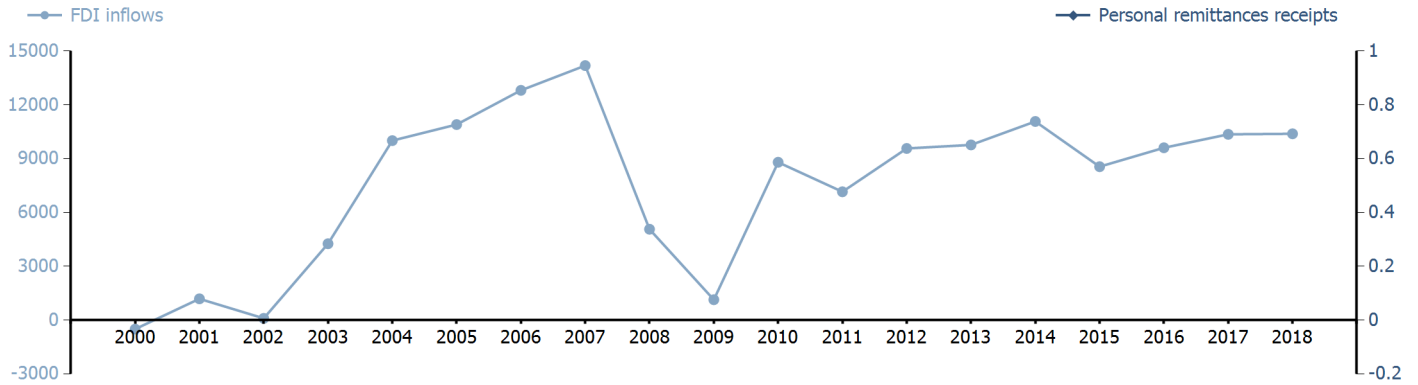
	2005	2010	2015	2018
FDI inflows	10 899.93	8 796.77	8 550.90	10 385.29
FDI outflows	3 750.30	2 015.00	16 691.60	15 079.29
Personal remittances, % of GDP

+3.6 %

FDI outflows as % of GDP in 2018

Financial flows trends

(millions of US\$)



TRADE IN GOODS AND SERVICES

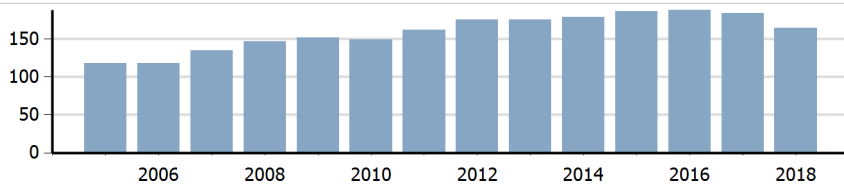
Trade balance indicators ²

(as % and index)

	2005	2010	2015	2018
Balance, % of GDP	15.42	6.42	15.49	19.09
Balance, % of imports	30.05	9.01	18.14	26.35
Normalized balance	0.131	0.043	0.083	0.116

Trade openness ²

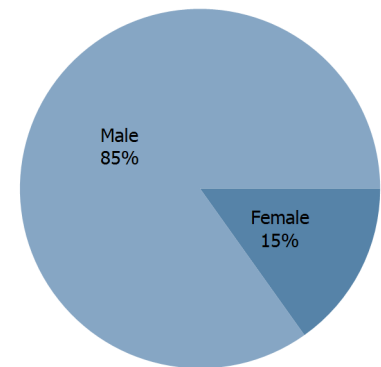
(sum of imports and exports as % of GDP)



LABOUR FORCE

Labour force by gender in 2018

(as % of total labour force, all sectors)



OTHER INDICATORS

Maritime transport indicators

	2005	2010	2015	2018
Merchant fleet, national flag (thousands of DWT)	986	1 412	958	765
Liner shipping connectivity index (maximum 2006 = 100 for China)	..	62.65	60.94	72.87
Container port throughput (TEU)	..	15 177 436	21 233 200	19 054 000

0.040 %

Share of the total world merchant fleet in 2018

Information economy indicators

(as % of)

	2005	2010	2015	2018
Share of ICT goods, % of total exports	4.30	..	2.26	..
Share of ICT goods, % of total imports	8.08	..	4.90	..
Share of workforce involved in the ICT sector

UNITED ARAB EMIRATES

Source: UNCTADstat (<http://unctadstat.unctad.org>)

Notes:

- 1 Land area refers to the total area of a country excluding area under inland water bodies. It differs from the country area, that includes area under inland water bodies, but excludes offshore territorial waters.
- 2 Statistics presented correspond to the 6th edition of the IMF Balance of Payments and International Investment Position Manual (BPM6, 2009).
- e Estimated.
- n Estimated. Data refers to 2016.

Symbols for missing values:

- 0 Zero means that the amount is nil or negligible
- .. Not available or not separately reported
- _ Not applicable
- ... Not available, including no quotation
- # Non-relevant calculation
- Not publishable
- *** Negative accumulation of flows; Value included in regional and global totals

Abbreviations & acronyms:

- DWT: Dead weight tons
- FDI: Foreign direct investment
- GDP: Gross domestic product
- ICT: Information and communication technology
- TEU: Twenty foot equivalent unit
- US\$: United States dollar

Disclaimer:

The designations employed and the presentation of the material on UNCTADstat do not imply the expression of any opinion whatsoever on the part of the secretariat of the United Nations concerning the legal status of any country, territory, city or area, or of its authorities, or concerning the delimitation of its frontiers or boundaries.

Where the designations "economy" or "country or area" appear in texts or tables, they cover regions, countries, territories, cities or areas.

UNCTAD strives for the highest level of accuracy and is committed to promptly correcting any errors on its part. It does not guarantee or make any express or implied representations regarding the accuracy, reliability, correctness, fitness for use for a particular purpose, or otherwise, whatsoever, of any of the tables in UNCTADstat.

Generation date: 05 November 2019