

GENERAL PROFILE: SURINAME

GENERAL INFORMATION FOR 2023

Population
0.629 Millions

Exchange rate
..

GDP
3 759 Millions current US\$

Land area¹
(u) 156 000 km²

CPI growth
51.58 %

GDP growth
2.15 %

INTERNATIONAL MERCHANDISE TRADE

Total merchandise trade

(millions of US\$)

	2005	2010	2015	2023
Merchandise exports	997	2 026	1 652	2 311
Merchandise imports	1 050	1 398	2 028	1 697
Merchandise trade balance	-53	628	-376	614

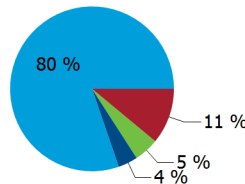
-18.5 %

Merchandise exports growth rate in 2023

Export structure by product group in 2023

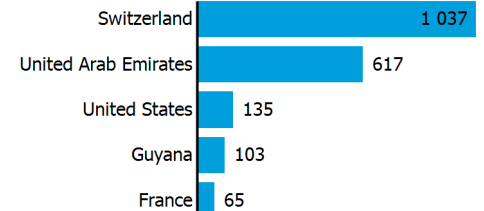
(as % of total exports)

- All food items
- Fuels
- Manufactured goods
- Other



Top 5 partners in 2023

(exports, millions of US\$)



INTERNATIONAL TRADE IN SERVICES

Total trade in services²

(millions of US\$)

	2005	2010	2015	2023
Services exports	204	241	177	173
Services imports	355	259	709	631
Services trade balance	-151	-18	-531	-458

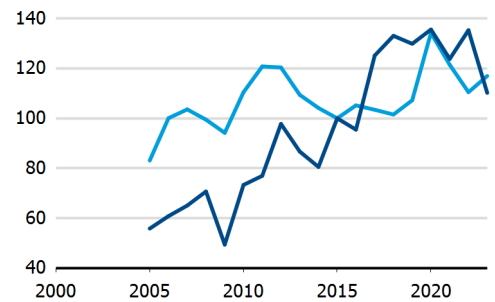
Services exports by main category²

(as % of total services)

	2005	2010	2015	2023
Transport	34.4	12.9	22.2	17.1
Travel	21.9	25.2	49.4	16.9
Other services	43.8	61.9	-	66.0

TRADE INDICES

- Terms of trade index
- Purchasing power index of exports



ECONOMIC TRENDS

Economic indicators

(millions of US\$ unless otherwise specified)

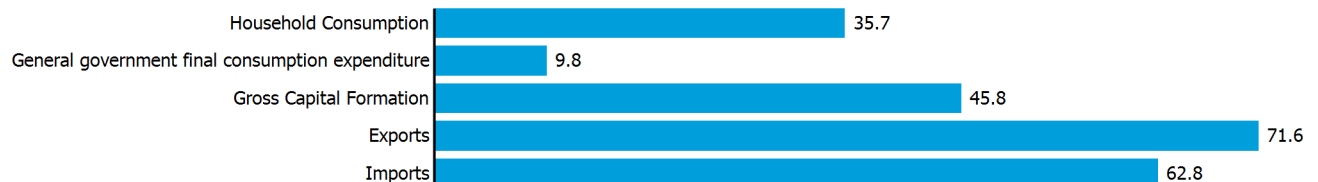
	2005	2010	2015	2023
GDP, current	2 193	4 482	5 126	3 759
GDP per capita, current US\$	4 223	8 150	8 814	5 976
Real GDP growth, y-on-y, %	3.92	6.07	-2.58	2.15
Current account balance, % of GDP	-6.69	14.52	-15.34	3.96
Exchange rate (/US\$)	2.732	2.745	3.417	..

+2.1 %

Gross domestic product growth rate in 2023

GDP by expenditure in 2022

(as % of total GDP)



SURINAME

FDI AND EXTERNAL FINANCIAL RESOURCES

Financial flows

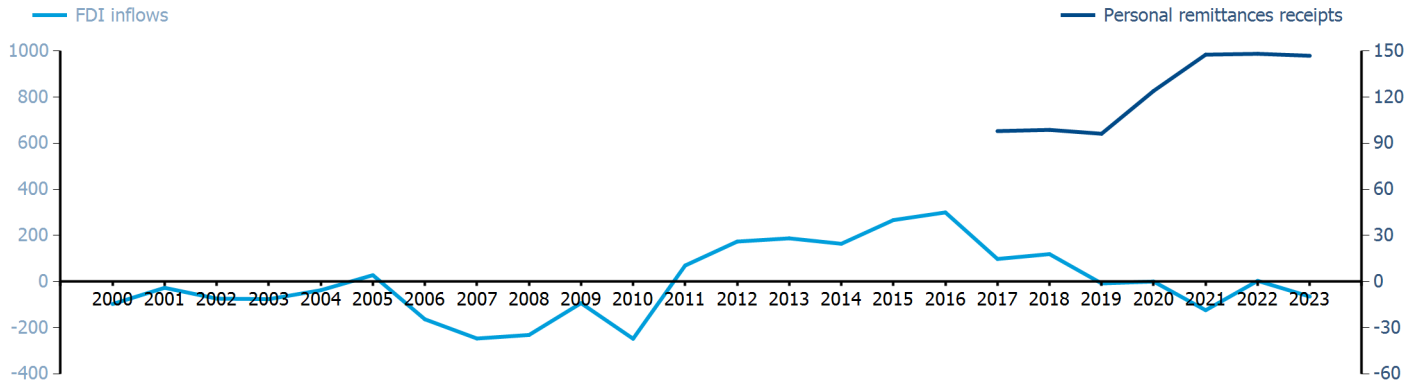
(millions of US\$ unless otherwise specified)

	2005	2010	2015	2023
FDI inflows	28.00	-247.70	266.74	-64.79
FDI outflows
Personal remittances, % of GDP	3.92

FDI outflows as % of GDP in 2023

Financial flows trends

(millions of US\$)



TRADE IN GOODS AND SERVICES

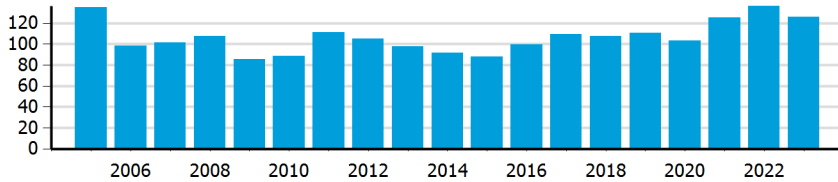
Trade balance indicators²

(as % and index)

	2005	2010	2015	2023
Balance, % of GDP	-5.85	14.92	-16.36	8.77
Balance, % of imports	-8.32	40.35	-31.27	14.96
Normalized balance	-0.043	0.168	-0.185	0.070

Trade openness²

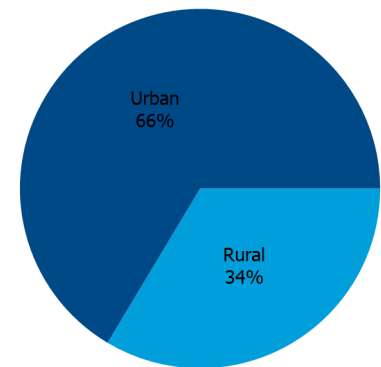
(sum of imports and exports as % of GDP)



LIVING AREA

Population by living area in 2023

(% of population)



OTHER INDICATORS

Maritime transport indicators

	2005	2010	2015	2023
Merchant fleet, national flag (thousands of DWT)	6	6	7	7
Container port throughput (TEU)	..	59 583	106 014	-

0 %

Share of the total world merchant fleet in 2023

Information economy indicators

(as % of)

	2005	2010	2015	2023
Share of ICT goods, % of total exports	0.22	0.08	0.04	0.06
Share of ICT goods, % of total imports	3.33	2.99	2.37	1.73
Share of workforce involved in the ICT sector

SURINAME

Source: UN Trade and Development, UNCTADstat (<https://unctadstat.unctad.org/datacentre>)

Notes:

- 1 Land area refers to the total area of a country excluding area under inland water bodies. It differs from the country area, that includes area under inland water bodies, but excludes offshore territorial waters.
- 2 Statistics presented correspond to the 6th edition of the IMF Balance of Payments and International Investment Position Manual (BPM6, 2009).
- u Estimated. Data refers to 2020.

Symbols for missing values:

- 0 Zero means that the amount is nil or negligible
- .. No value reported or collected
- Not applicable
- ... Not available, including no quotation
- # Non-relevant calculation
- Not publishable
- *** Negative accumulation of flows; Value included in regional and global totals

Abbreviations & acronyms:

- DWT: Dead weight tons
- FDI: Foreign direct investment
- GDP: Gross domestic product
- ICT: Information and communication technology
- TEU: Twenty foot equivalent unit
- US\$: United States dollar

Disclaimer:

The designations employed and the presentation of the material on the UNCTAD Data Hub do not imply the expression of any opinion whatsoever on the part of the secretariat of the United Nations concerning the legal status of any country, territory, city or area, or of its authorities, or concerning the delimitation of its frontiers or boundaries.

Where the designations "economy" or "country or area" appear in texts or tables, they cover regions, countries, territories, cities or areas.

UNCTAD strives for the highest level of accuracy and is committed to promptly correcting any errors on its part. It does not guarantee or make any express or implied representations regarding the accuracy, reliability, correctness, fitness for use for a particular purpose, or otherwise, whatsoever, of any of the tables in the UNCTAD Data Hub.

Generation date: 15 April 2025