

GENERAL PROFILE: RUSSIAN FEDERATION

GENERAL INFORMATION FOR 2021

Population
145.103 Millions

Exchange rate
73.654 RUB/US\$

GDP
1 769 867 Millions current US\$

Land area¹
(q) 16 376 870 km²

CPI growth
6.69 %

GDP growth
4.69 %

INTERNATIONAL MERCHANDISE TRADE

Total merchandise trade

(millions of US\$)

	2005	2010	2015	2021
Merchandise exports	243 798	400 630	341 419	493 820
Merchandise imports	125 434	248 634	193 019	303 994
Merchandise trade balance	118 364	151 996	148 400	189 826

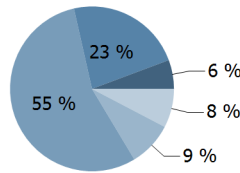
+48.1 %

Merchandise exports
growth rate in 2021

Export structure by product group in 2021

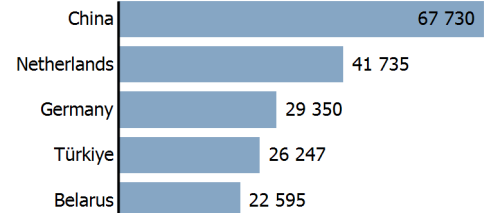
(as % of total exports)

- All food items
- Ores and metals
- Fuels
- Manufactured goods
- Other



Top 5 partners in 2021

(exports, millions of US\$)



INTERNATIONAL TRADE IN SERVICES

Total trade in services²

(millions of US\$)

	2005	2010	2015	2021
Services exports	28 845	49 159	51 616	(e) 56 587
Services imports	40 471	75 279	88 768	(e) 75 902
Services trade balance	-11 626	-26 120	-37 152	(e) -19 315

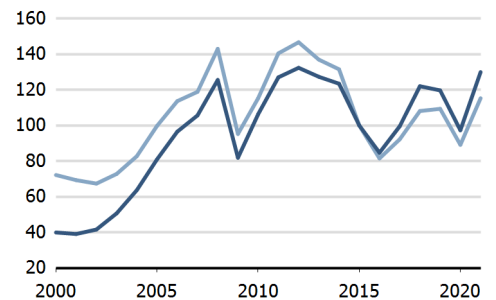
Services exports by main category²

(as % of total services)

	2005	2010	2015	2021
Transport	31.6	30.3	32.2	(e) 33.5
Travel	20.3	18.0	16.3	(e) 7.1
Other services	40.0	43.3	46.4	(e) 55.1

TRADE INDICES

- Terms of trade index
- Purchasing power index of exports



ECONOMIC TRENDS

Economic indicators

(millions of US\$ unless otherwise specified)

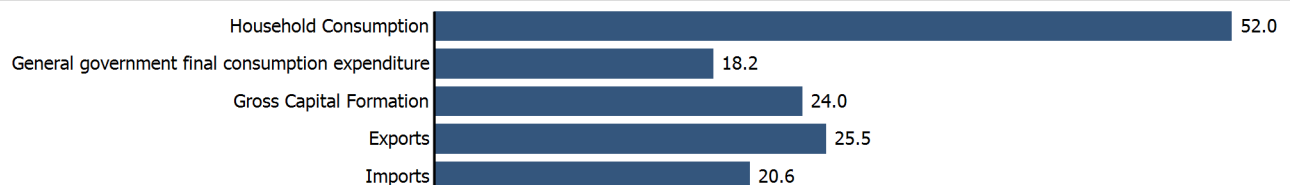
	2005	2010	2015	2021
GDP, current	771 495	1 539 845	1 363 482	1 769 867
GDP per capita, current US\$	5 365	10 750	9 425	12 197
Real GDP growth, y-on-y, %	6.38	4.50	-1.97	4.69
Current account balance, % of GDP	10.94	4.38	4.97	6.90
Exchange rate (/US\$)	28.284	30.368	60.938	73.654

+4.7 %

Gross domestic product
growth rate in 2021

GDP by expenditure in 2020

(as % of total GDP)



RUSSIAN FEDERATION

FDI AND EXTERNAL FINANCIAL RESOURCES

Financial flows

(millions of US\$ unless otherwise specified)

	2005	2010	2015	2021
FDI inflows	14 375.05	31 667.97	11 857.81	38 239.68
FDI outflows	16 746.64	41 116.46	27 089.94	63 602.49
Personal remittances, % of GDP	0.45	0.34	0.51	..

+3.6 %

FDI outflows as % of GDP in 2021

Financial flows trends

(millions of US\$)



TRADE IN GOODS AND SERVICES

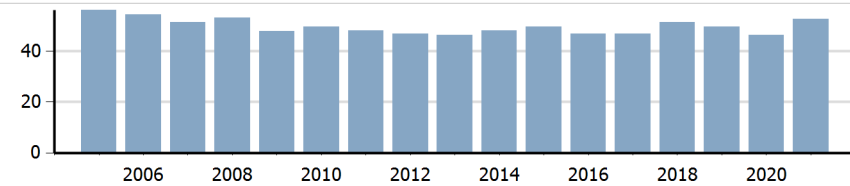
Trade balance indicators²

(as % and index)

	2005	2010	2015	2021
Balance, % of GDP	13.55	7.85	8.16	(e) 9.63
Balance, % of imports	63.64	37.66	39.48	(e) 44.88
Normalized balance	0.241	0.158	0.165	(e) 0.183

Trade openness²

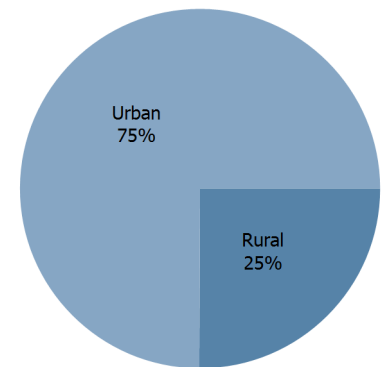
(sum of imports and exports as % of GDP)



LIVING AREA

Population by living area in 2021

(% of population)



OTHER INDICATORS

Maritime transport indicators

	2005	2010	2015	2021
Merchant fleet, national flag (thousands of DWT)	8 420	7 283	8 090	10 922
Liner shipping connectivity index (maximum 2006 = 100 for China)	..	26.91	45.77	35.39
Container port throughput (TEU)	..	3 243 368	3 909 400	..

0.511 %

Share of the total world merchant fleet in 2021

Information economy indicators

(as % of)

	2005	2010	2015	2021
Share of ICT goods, % of total exports	0.18	0.22	0.81	..
Share of ICT goods, % of total imports	7.76	8.53	9.14	..
Share of workforce involved in the ICT sector	4.38	..	3.27	..

RUSSIAN FEDERATION

Source: UNCTADstat (<http://unctadstat.unctad.org>)

Notes:

- 1 Land area refers to the total area of a country excluding area under inland water bodies. It differs from the country area, that includes area under inland water bodies, but excludes offshore territorial waters.
- 2 Statistics presented correspond to the 6th edition of the IMF Balance of Payments and International Investment Position Manual (BPM6, 2009).
- e Estimated.
- q Estimated. Data refers to 2020.

Symbols for missing values:

- 0 Zero means that the amount is nil or negligible
- .. Not available or not separately reported
- _ Not applicable
- ... Not available, including no quotation
- # Non-relevant calculation
- Not publishable
- *** Negative accumulation of flows; Value included in regional and global totals

Abbreviations & acronyms:

- DWT: Dead weight tons
- FDI: Foreign direct investment
- GDP: Gross domestic product
- ICT: Information and communication technology
- TEU: Twenty foot equivalent unit
- US\$: United States dollar

Disclaimer:

The designations employed and the presentation of the material on UNCTADstat do not imply the expression of any opinion whatsoever on the part of the secretariat of the United Nations concerning the legal status of any country, territory, city or area, or of its authorities, or concerning the delimitation of its frontiers or boundaries.

Where the designations "economy" or "country or area" appear in texts or tables, they cover regions, countries, territories, cities or areas.

UNCTAD strives for the highest level of accuracy and is committed to promptly correcting any errors on its part. It does not guarantee or make any express or implied representations regarding the accuracy, reliability, correctness, fitness for use for a particular purpose, or otherwise, whatsoever, of any of the tables in UNCTADstat.

Generation date: 20 October 2022