



## GENERAL PROFILE: MICRONESIA (FEDERATED STATES OF)


### GENERAL INFORMATION FOR 2017

 **Population**  
0.106 Millions

 **Exchange rate**  
1.000 USD/US\$

 **GDP**  
331 Millions current US\$

 **Land area <sup>1</sup>**  
(m) 700 km<sup>2</sup>

 **CPI growth**  
0.00 %

 **GDP growth**  
1.00 %

### INTERNATIONAL MERCHANDISE TRADE

#### Total merchandise trade

(millions of US\$)

	2005	2010	2015	2017
Merchandise exports	19	30	40	(e) 120
Merchandise imports	130	168	160	(e) 195
Merchandise trade balance	-112	-138	-121	(e) -75

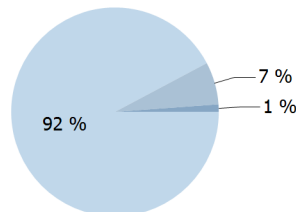
**+60.0 %**

Merchandise exports  
growth rate in 2017

#### Export structure by product group in 2017

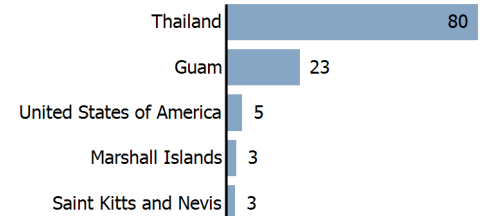
(as % of total exports)

-  All food items
-  Manufactured goods
-  Other



#### Top 5 partners in 2017

(exports, millions of US\$)



### INTERNATIONAL TRADE IN SERVICES

#### Total trade in services <sup>2</sup>

(millions of US\$)



	2005	2010	2015	2017
Services exports	19	35	-	-
Services imports	60	80	-	-
Services trade balance	-41	-45	-	-

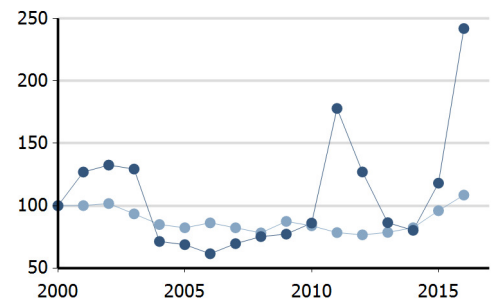
#### Services exports by main category <sup>2</sup>

(as % of total services)

	2005	2010	2015	2017
Transport	23.8	7.6	-	-
Travel	69.4	69.2	-	-
Other services	6.7	20.2	-	-

### TRADE INDICES

-  Terms of trade index
-  Purchasing power index of exports



### ECONOMIC TRENDS

#### Economic indicators

(millions of US\$ unless otherwise specified)

	2005	2010	2015	2017
GDP, current	251	297	315	331
GDP per capita, current US\$	2 360	2 862	3 018	3 140
Real GDP growth, y-on-y, %	2.06	2.04	4.93	1.00
Current account balance, % of GDP	..	..	..	..
Exchange rate (/US\$)	1.000	1.000	1.000	1.000

**+1.0 %**

Gross domestic product  
growth rate in 2017

#### GDP by expenditure in 2016

(as % of total GDP)



# MICRONESIA (FEDERATED STATES OF)

## FDI AND EXTERNAL FINANCIAL RESOURCES

### Financial flows

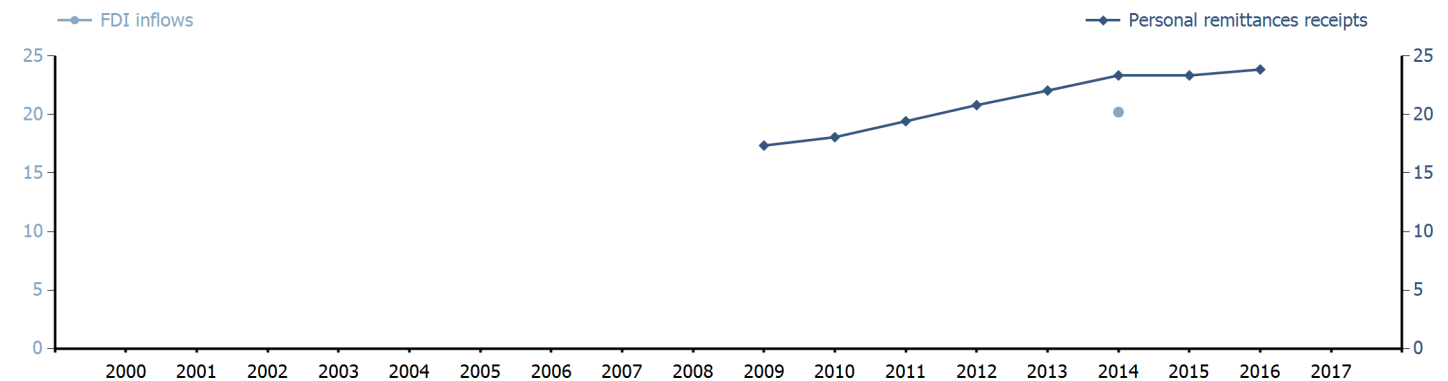
(millions of US\$ unless otherwise specified)

	2005	2010	2015	2017
FDI inflows	..	..	..	..
FDI outflows	..	..	..	..
Personal remittances, % of GDP	..	6.08	7.41	..

FDI outflows as % of GDP in 2017

### Financial flows trends

(millions of US\$)



## TRADE IN GOODS AND SERVICES

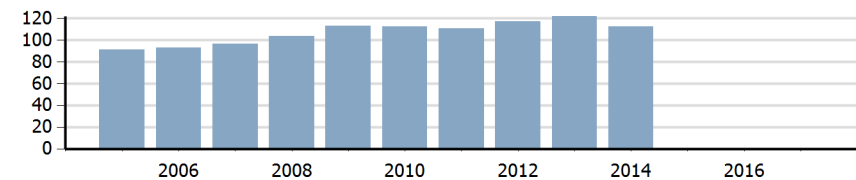
### Trade balance indicators <sup>2</sup>

(as % and index)

	2005	2010	2015	2017
Balance, % of GDP	-60.93	-49.90	-	-
Balance, % of imports	-80.16	-61.58	-	-
Normalized balance	-0.669	-0.445	-	-

### Trade openness <sup>2</sup>

(sum of imports and exports as % of GDP)



## LABOUR FORCE

### Labour force by gender in 2017

(as % of total labour force, all sectors)

No data available

## OTHER INDICATORS

### Maritime transport indicators

	2005	2010	2015	2017
Merchant fleet, national flag (thousands of DWT)	..	10	66	304
Liner shipping connectivity index (maximum 2004 = 100 for China)	2.87	3.43	1.32	1.93
Container port throughput (TEU)	..	..	..	..

0.016 %

Share of the total world merchant fleet in 2017

### Information economy indicators

(as % of)

	2005	2010	2015	2017
Share of ICT goods, % of total exports	..	..	..	..
Share of ICT goods, % of total imports	2.77	2.27	..	..
Share of workforce involved in the ICT sector	..	..	..	..

# MICRONESIA (FEDERATED STATES OF)

Source: UNCTADstat (<http://unctadstat.unctad.org>)

## Notes:

- 1 Land area refers to the total area of a country excluding area under inland water bodies. It differs from the country area, that includes area under inland water bodies, but excludes offshore territorial waters.
- 2 Statistics presented correspond to the 6th edition of the IMF Balance of Payments and International Investment Position Manual (BPM6, 2009).
- e Estimated.
- m Estimated. Data refers to 2013.

## Symbols for missing values:

- 0 Zero means that the amount is nil or negligible
- .. Not available or not separately reported
- \_ Not applicable
- ... Not available, including no quotation
- # Non-relevant calculation
- Not publishable
- \*\*\* Negative accumulation of flows; Value included in regional and global totals

## Abbreviations & acronyms:

- DWT: Dead weight tons
- FDI: Foreign direct investment
- GDP: Gross domestic product
- ICT: Information and communication technology
- TEU: Twenty foot equivalent unit
- US\$: United States dollar

## Disclaimer:

The designations employed and the presentation of the material on UNCTADstat do not imply the expression of any opinion whatsoever on the part of the secretariat of the United Nations concerning the legal status of any country, territory, city or area, or of its authorities, or concerning the delimitation of its frontiers or boundaries.

Where the designations "economy" or "country or area" appear in texts or tables, they cover regions, countries, territories, cities or areas.

UNCTAD strives for the highest level of accuracy and is committed to promptly correcting any errors on its part. It does not guarantee or make any express or implied representations regarding the accuracy, reliability, correctness, fitness for use for a particular purpose, or otherwise, whatsoever, of any of the tables in UNCTADstat.

Generation date: 14 August 2018