

GENERAL PROFILE: NORWAY

GENERAL INFORMATION FOR 2017

Population
5.305 Millions

Exchange rate
8.272 NOK/US\$

GDP
396 399 Millions current US\$

Land area ¹
(m) 365 245 km²

CPI growth
1.88 %

GDP growth
1.80 %

INTERNATIONAL MERCHANDISE TRADE

Total merchandise trade

(millions of US\$)

	2005	2010	2015	2017
Merchandise exports	103 759	130 657	103 809	104 098
Merchandise imports	55 488	77 330	76 387	82 900
Merchandise trade balance	48 271	53 327	27 421	21 198

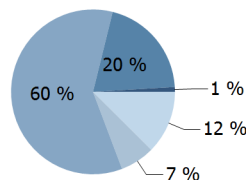
+16.3 %

Merchandise exports
growth rate in 2017

Export structure by product group in 2017

(as % of total exports)

- All food items
- Ores and metals
- Fuels
- Manufactured goods
- Other



Top 5 partners in 2017

(exports, millions of US\$)

United Kingdom	21 523
Germany	15 823
Netherlands	10 135
Sweden	6 739
France	6 570

INTERNATIONAL TRADE IN SERVICES

Total trade in services ²

(millions of US\$)

	2005	2010	2015	2017
Services exports	29 834	41 453	41 647	37 037
Services imports	29 128	45 073	47 269	49 039
Services trade balance	706	-3 620	-5 622	-12 002

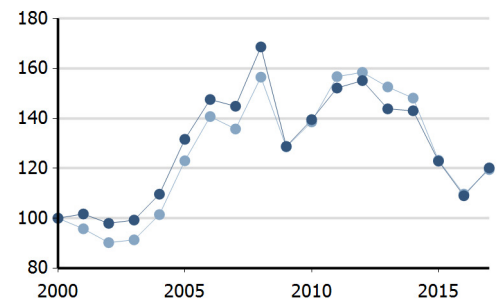
Services exports by main category ²

(as % of total services)

	2005	2010	2015	2017
Transport	54.6	44.1	43.5	40.9
Travel	11.7	11.3	11.7	14.6
Other services	32.1	42.8	42.8	42.3

TRADE INDICES

- Terms of trade index
- Purchasing power index of exports



ECONOMIC TRENDS

Economic indicators

(millions of US\$ unless otherwise specified)

	2005	2010	2015	2017
GDP, current	308 722	429 131	386 663	396 399
GDP per capita, current US\$	66 645	87 831	74 361	74 716
Real GDP growth, y-on-y, %	2.62	0.69	1.97	1.80
Current account balance, % of GDP	16.19	11.71	8.04	5.51
Exchange rate (/US\$)	6.443	6.044	8.064	8.272

+1.8 %

Gross domestic product
growth rate in 2017

GDP by expenditure in 2016

(as % of total GDP)



NORWAY

FDI AND EXTERNAL FINANCIAL RESOURCES

Financial flows

(millions of US\$ unless otherwise specified)

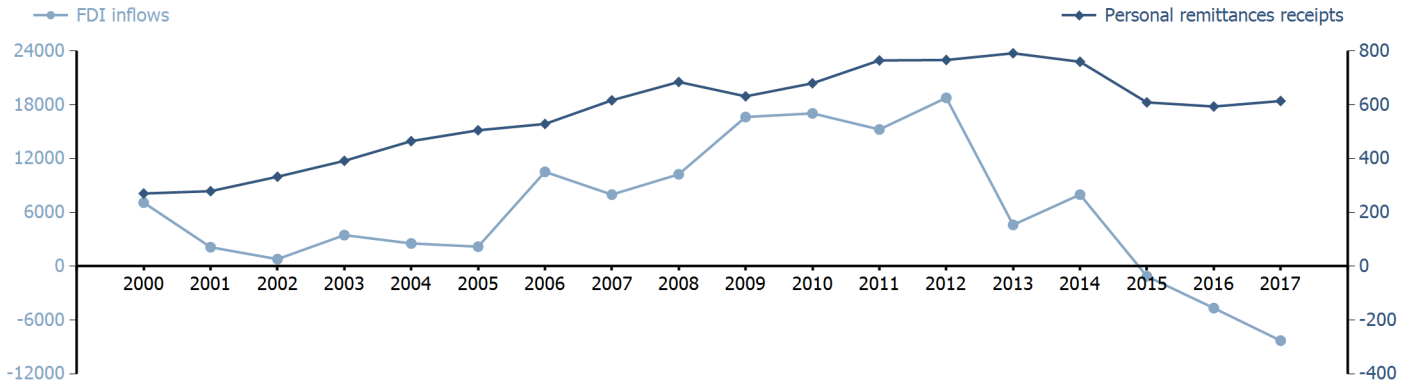
	2005	2010	2015	2017
FDI inflows	2 180.52	17 043.86	-1 121.38	-8 296.88
FDI outflows	23 677.92	23 238.92	27 668.08	-2 930.49
Personal remittances, % of GDP	0.16	0.16	0.16	0.15

-0.7 %

FDI outflows as % of GDP in 2017

Financial flows trends

(millions of US\$)



TRADE IN GOODS AND SERVICES

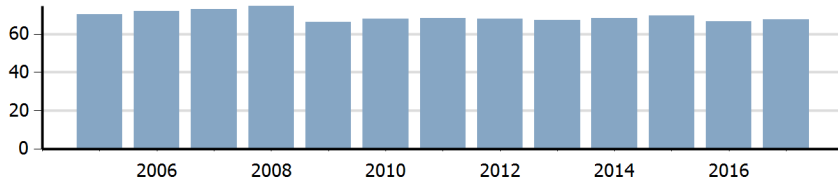
Trade balance indicators ²

(as % and index)

	2005	2010	2015	2017
Balance, % of GDP	15.99	11.54	5.64	2.01
Balance, % of imports	58.79	40.94	17.65	6.12
Normalized balance	0.227	0.170	0.081	0.030

Trade openness ²

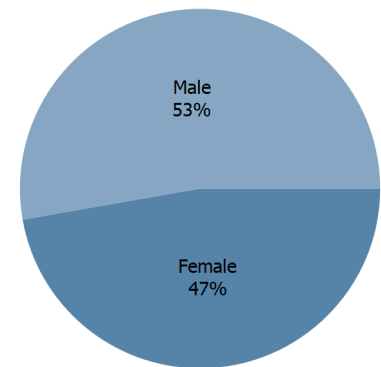
(sum of imports and exports as % of GDP)



LABOUR FORCE

Labour force by gender in 2017

(as % of total labour force, all sectors)



OTHER INDICATORS

Maritime transport indicators

	2005	2010	2015	2017
Merchant fleet, national flag (thousands of DWT)	24 243	20 811	19 447	21 495
Liner shipping connectivity index (maximum 2004 = 100 for China)	8.31	7.93	4.75	6.99
Container port throughput (TEU)	..	646 900	744 400	826 500

1.154 %

Share of the total world merchant fleet in 2017

Information economy indicators

(as % of)

	2005	2010	2015	2017
Share of ICT goods, % of total exports	1.22	1.43	1.08	..
Share of ICT goods, % of total imports	8.77	7.45	6.62	..
Share of workforce involved in the ICT sector	..	(o) 6.01

NORWAY

Source: UNCTADstat (<http://unctadstat.unctad.org>)

Notes:

- 1 Land area refers to the total area of a country excluding area under inland water bodies. It differs from the country area, that includes area under inland water bodies, but excludes offshore territorial waters.
- 2 Statistics presented correspond to the 6th edition of the IMF Balance of Payments and International Investment Position Manual (BPM6, 2009).
- m Estimated. Data refers to 2013.
- o Number of persons employed in full time equivalent units. Total business economy includes repair of computers, personal and household goods; except financial and insurance activities.

Symbols for missing values:

- 0 Zero means that the amount is nil or negligible
- .. Not available or not separately reported
- Not applicable
- ... Not available, including no quotation
- # Non-relevant calculation
- Not publishable
- *** Negative accumulation of flows; Value included in regional and global totals

Abbreviations & acronyms:

- DWT: Dead weight tons
- FDI: Foreign direct investment
- GDP: Gross domestic product
- ICT: Information and communication technology
- TEU: Twenty foot equivalent unit
- US\$: United States dollar

Disclaimer:

The designations employed and the presentation of the material on UNCTADstat do not imply the expression of any opinion whatsoever on the part of the secretariat of the United Nations concerning the legal status of any country, territory, city or area, or of its authorities, or concerning the delimitation of its frontiers or boundaries.

Where the designations "economy" or "country or area" appear in texts or tables, they cover regions, countries, territories, cities or areas.

UNCTAD strives for the highest level of accuracy and is committed to promptly correcting any errors on its part. It does not guarantee or make any express or implied representations regarding the accuracy, reliability, correctness, fitness for use for a particular purpose, or otherwise, whatsoever, of any of the tables in UNCTADstat.

Generation date: 19 November 2018