

GENERAL PROFILE: OMAN

GENERAL INFORMATION FOR 2020

Population
5.107 Millions

Exchange rate
0.385 OMR/US\$

GDP
63 507 Millions current US\$

Land area¹
(n) 309 500 km²

CPI growth
-0.90 %

GDP growth
-5.90 %

INTERNATIONAL MERCHANDISE TRADE

Total merchandise trade

(millions of US\$)

	2005	2010	2015	2020
Merchandise exports	18 692	36 601	31 927	(e) 31 685
Merchandise imports	8 971	19 973	29 007	(e) 20 960
Merchandise trade balance	9 721	16 629	2 919	(e) 10 725

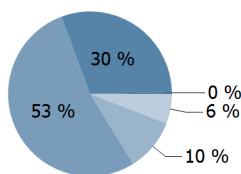
-18.2 %

Merchandise exports growth rate in 2020

Export structure by product group in 2020

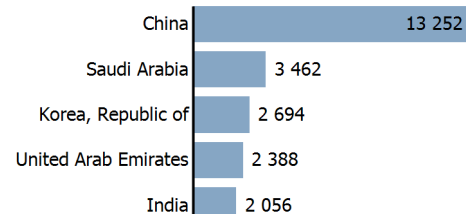
(as % of total exports)

- All food items
- Ores and metals
- Fuels
- Manufactured goods
- Other



Top 5 partners in 2020

(exports, millions of US\$)



INTERNATIONAL TRADE IN SERVICES

Total trade in services²

(millions of US\$)

	2005	2010	2015	2020
Services exports	939	1 808	3 395	(e) 1 830
Services imports	3 145	6 364	10 215	(e) 5 539
Services trade balance	-2 207	-4 557	-6 819	(e) -3 709

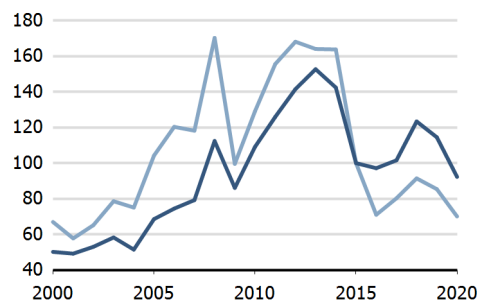
Services exports by main category²

(as % of total services)

	2005	2010	2015	2020
Transport	31.9	29.1	37.0	-
Travel	45.7	43.3	45.4	-
Other services	22.4	27.6	17.6	-

TRADE INDICES

- Terms of trade index
- Purchasing power index of exports



ECONOMIC TRENDS

Economic indicators

(millions of US\$ unless otherwise specified)

	2005	2010	2015	2020
GDP, current	31 082	56 913	68 400	63 507
GDP per capita, current US\$	12 377	18 713	16 029	12 436
Real GDP growth, y-on-y, %	2.49	1.71	4.63	-5.90
Current account balance, % of GDP	16.66	8.14	-16.01	(e) -13.64
Exchange rate (/US\$)	0.385	0.385	0.385	0.385

-5.9 %

Gross domestic product growth rate in 2020

GDP by expenditure in 2019

(as % of total GDP)



OMAN

FDI AND EXTERNAL FINANCIAL RESOURCES

Financial flows

(millions of US\$ unless otherwise specified)

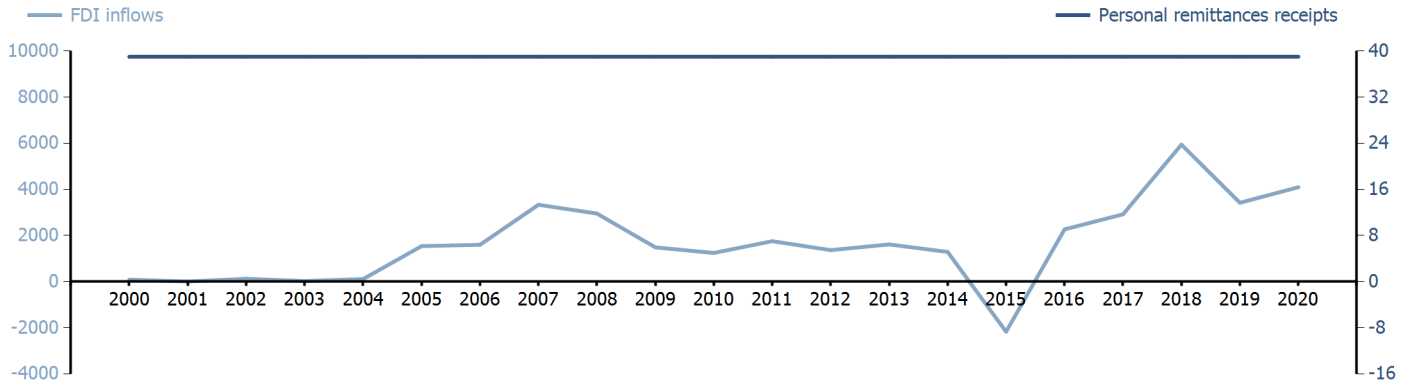
	2005	2010	2015	2020
FDI inflows	1 538.00	(j) 1 243.17	(j) -2 171.65	4 092.76
FDI outflows	234.00	1 498.05	335.50	1 255.31
Personal remittances, % of GDP	0.13	0.07	0.06	0.06

+2.0 %

FDI outflows as % of GDP in 2020

Financial flows trends

(millions of US\$)



TRADE IN GOODS AND SERVICES

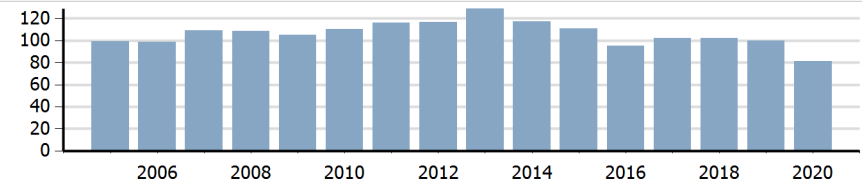
Trade balance indicators²

(as % and index)

	2005	2010	2015	2020
Balance, % of GDP	27.21	24.90	3.36	(e) 5.89
Balance, % of imports	75.68	58.45	6.25	(e) 15.64
Normalized balance	0.275	0.226	0.030	(e) 0.073

Trade openness²

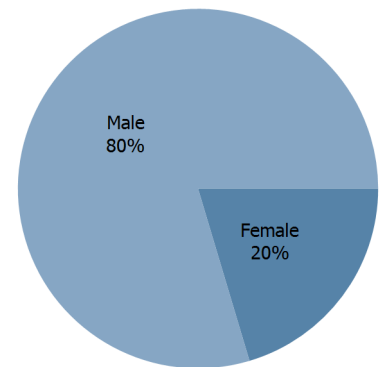
(sum of imports and exports as % of GDP)



LABOUR FORCE

Labour force by gender in 2020

(as % of total labour force, all sectors)



OTHER INDICATORS

Maritime transport indicators

	2005	2010	2015	2020
Merchant fleet, national flag (thousands of DWT)	9	14	16	18
Liner shipping connectivity index (maximum 2006 = 100 for China)	..	31.80	40.49	52.27
Container port throughput (TEU)	..	3 835 395	3 136 000	5 141 830

0.001 %

Share of the total world merchant fleet in 2020

Information economy indicators

(as % of)

	2005	2010	2015	2020
Share of ICT goods, % of total exports	0.18	0.10	0.14	..
Share of ICT goods, % of total imports	4.38	2.40	3.13	..
Share of workforce involved in the ICT sector

OMAN

Source: UNCTADstat (<http://unctadstat.unctad.org>)

Notes:

- 1 Land area refers to the total area of a country excluding area under inland water bodies. It differs from the country area, that includes area under inland water bodies, but excludes offshore territorial waters.
- 2 Statistics presented correspond to the 6th edition of the IMF Balance of Payments and International Investment Position Manual (BPM6, 2009).
- e Estimated.
- j Asset/liability basis.
- n Estimated. Data refers to 2016.

Symbols for missing values:

- 0 Zero means that the amount is nil or negligible
- .. Not available or not separately reported
- Not applicable
- ... Not available, including no quotation
- # Non-relevant calculation
- Not publishable
- *** Negative accumulation of flows; Value included in regional and global totals

Abbreviations & acronyms:

- DWT: Dead weight tons
- FDI: Foreign direct investment
- GDP: Gross domestic product
- ICT: Information and communication technology
- TEU: Twenty foot equivalent unit
- US\$: United States dollar

Disclaimer:

The designations employed and the presentation of the material on UNCTADstat do not imply the expression of any opinion whatsoever on the part of the secretariat of the United Nations concerning the legal status of any country, territory, city or area, or of its authorities, or concerning the delimitation of its frontiers or boundaries.

Where the designations "economy" or "country or area" appear in texts or tables, they cover regions, countries, territories, cities or areas.

UNCTAD strives for the highest level of accuracy and is committed to promptly correcting any errors on its part. It does not guarantee or make any express or implied representations regarding the accuracy, reliability, correctness, fitness for use for a particular purpose, or otherwise, whatsoever, of any of the tables in UNCTADstat.

Generation date: 05 January 2022