

GENERAL PROFILE: LEBANON

GENERAL INFORMATION FOR 2017

Population
6.082 Millions

Exchange rate
1 507.500 LBP/US\$

GDP
52 646 Millions current US\$

Land area ¹
(m) 10 230 km²

CPI growth
4.49 %

GDP growth
1.80 %

INTERNATIONAL MERCHANDISE TRADE

Total merchandise trade

(millions of US\$)

	2005	2010	2015	2017
Merchandise exports	2 337	5 021	3 982	4 026
Merchandise imports	9 633	18 460	18 965	19 911
Merchandise trade balance	-7 296	-13 439	-14 984	-15 885

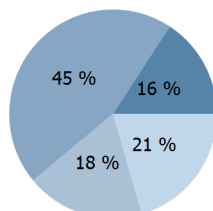
+2.4 %

Merchandise exports growth rate in 2017

Export structure by product group in 2017

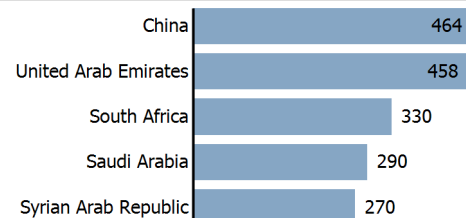
(as % of total exports)

- All food items
- Ores and metals
- Manufactured goods
- Other



Top 5 partners in 2017

(exports, millions of US\$)



INTERNATIONAL TRADE IN SERVICES

Total trade in services ²

(millions of US\$)

	2005	2010	2015	2017
Services exports	10 864	16 040	15 910	(e) 16 080
Services imports	7 890	(e) 13 179	(e) 13 693	(e) 13 853
Services trade balance	2 974	(e) 2 861	(e) 2 217	(e) 2 227

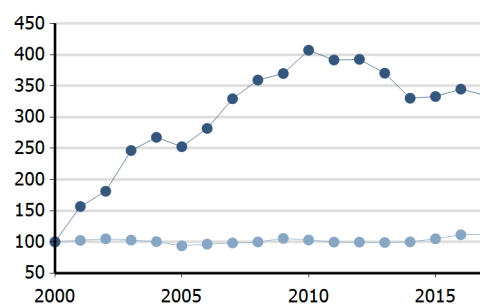
Services exports by main category ²

(as % of total services)

	2005	2010	2015	2017
Transport	4.0	4.1	9.1	(e) 8.5
Travel	50.9	49.0	43.1	(e) 47.9
Other services	45.0	46.1	47.3	(e) 43.1

TRADE INDICES

- Terms of trade index
- Purchasing power index of exports



ECONOMIC TRENDS

Economic indicators

(millions of US\$ unless otherwise specified)

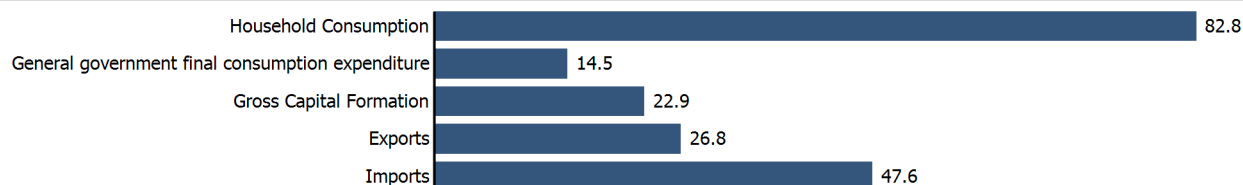
	2005	2010	2015	2017
GDP, current	21 490	38 420	49 459	52 646
GDP per capita, current US\$	5 390	8 858	8 452	8 655
Real GDP growth, y-on-y, %	2.75	8.04	0.82	1.80
Current account balance, % of GDP	-12.79	-19.66	-17.48	(e) -21.35
Exchange rate (/US\$)	1 507.500	1 507.500	1 507.500	1 507.500

+1.8 %

Gross domestic product growth rate in 2017

GDP by expenditure in 2016

(as % of total GDP)



LEBANON

FDI AND EXTERNAL FINANCIAL RESOURCES

Financial flows

(millions of US\$ unless otherwise specified)

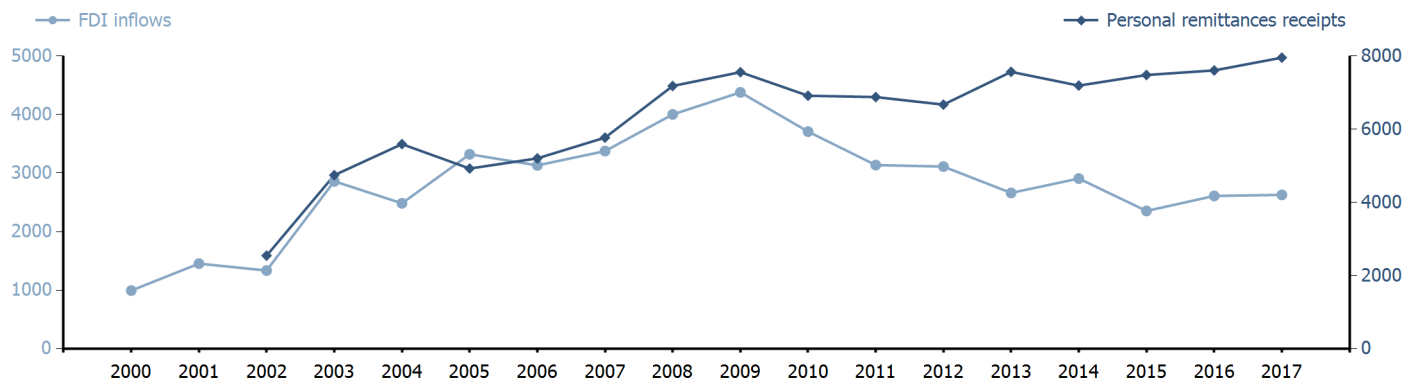
	2005	2010	2015	2017
FDI inflows	3 321.49	3 708.38	2 353.21	2 627.96
FDI outflows	715.50	486.83	661.72	567.33
Personal remittances, % of GDP	22.91	18.00	15.13	15.11

+1.1 %

FDI outflows as % of GDP in 2017

Financial flows trends

(millions of US\$)



TRADE IN GOODS AND SERVICES

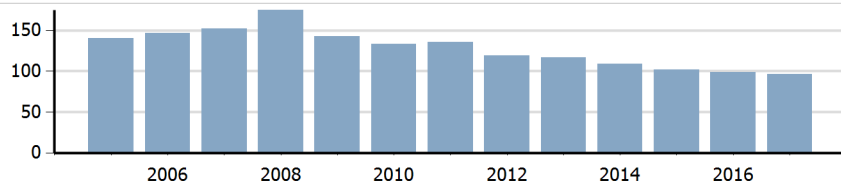
Trade balance indicators ²

(as % and index)

	2005	2010	2015	2017
Balance, % of GDP	-16.87	(e) -25.09	(e) -23.11	(e) -20.83
Balance, % of imports	-21.51	(e) -31.74	(e) -37.00	(e) -35.57
Normalized balance	-0.121	(e) -0.189	(e) -0.227	(e) -0.216

Trade openness ²

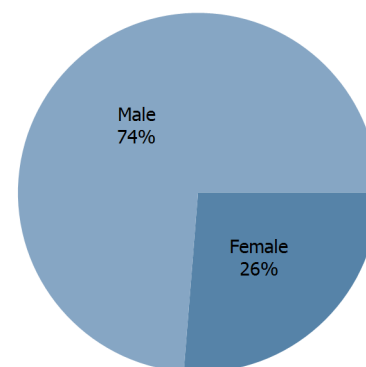
(sum of imports and exports as % of GDP)



LABOUR FORCE

Labour force by gender in 2017

(as % of total labour force, all sectors)



OTHER INDICATORS

Maritime transport indicators

	2005	2010	2015	2017
Merchant fleet, national flag (thousands of DWT)	238	159	169	190
Liner shipping connectivity index (maximum 2004 = 100 for China)	12.53	30.29	41.81	45.15
Container port throughput (TEU)	..	949 000	1 130 000	1 305 000

0.010 %

Share of the total world merchant fleet in 2017

Information economy indicators

(as % of)

	2005	2010	2015	2017
Share of ICT goods, % of total exports	1.84	7.11
Share of ICT goods, % of total imports	3.26	2.79
Share of workforce involved in the ICT sector

LEBANON

Source: UNCTADstat (<http://unctadstat.unctad.org>)

Notes:

- 1 Land area refers to the total area of a country excluding area under inland water bodies. It differs from the country area, that includes area under inland water bodies, but excludes offshore territorial waters.
- 2 Statistics presented correspond to the 6th edition of the IMF Balance of Payments and International Investment Position Manual (BPM6, 2009).
- e Estimated.
- m Estimated. Data refers to 2013.

Symbols for missing values:

- 0 Zero means that the amount is nil or negligible
- .. Not available or not separately reported
- Not applicable
- ... Not available, including no quotation
- # Non-relevant calculation
- Not publishable
- *** Negative accumulation of flows; Value included in regional and global totals

Abbreviations & acronyms:

- DWT: Dead weight tons
- FDI: Foreign direct investment
- GDP: Gross domestic product
- ICT: Information and communication technology
- TEU: Twenty foot equivalent unit
- US\$: United States dollar

Disclaimer:

The designations employed and the presentation of the material on UNCTADstat do not imply the expression of any opinion whatsoever on the part of the secretariat of the United Nations concerning the legal status of any country, territory, city or area, or of its authorities, or concerning the delimitation of its frontiers or boundaries.

Where the designations "economy" or "country or area" appear in texts or tables, they cover regions, countries, territories, cities or areas.

UNCTAD strives for the highest level of accuracy and is committed to promptly correcting any errors on its part. It does not guarantee or make any express or implied representations regarding the accuracy, reliability, correctness, fitness for use for a particular purpose, or otherwise, whatsoever, of any of the tables in UNCTADstat.

Generation date: 19 November 2018