

GENERAL PROFILE: FRENCH POLYNESIA

GENERAL INFORMATION FOR 2020

Population
0.281 Millions

Exchange rate
104.476 XPF/US\$

GDP
5 954 Millions current US\$

Land area¹
(n) 3 660 km²

CPI growth
-0.11 %

GDP growth
-3.00 %

INTERNATIONAL MERCHANDISE TRADE

Total merchandise trade

(millions of US\$)

	2005	2010	2015	2020
Merchandise exports	217	153	130	108
Merchandise imports	1 723	1 726	1 527	1 701
Merchandise trade balance	-1 506	-1 573	-1 397	-1 593

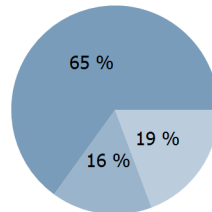
-20.3 %

Merchandise exports growth rate in 2020

Export structure by product group in 2020

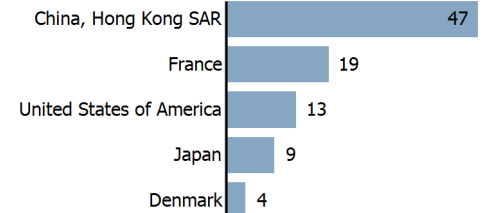
(as % of total exports)

- All food items
- Manufactured goods
- Other



Top 5 partners in 2020

(exports, millions of US\$)



INTERNATIONAL TRADE IN SERVICES

Total trade in services²

(millions of US\$)

	2005	2010	2015	2020
Services exports	1 074	970	993	-
Services imports	722	598	424	-
Services trade balance	352	372	569	-

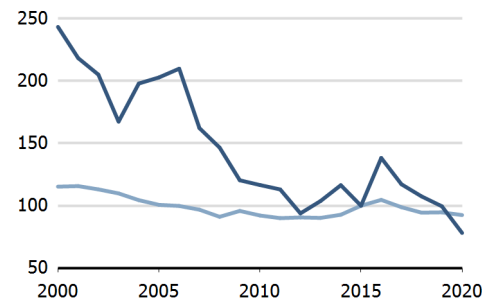
Services exports by main category²

(as % of total services)

	2005	2010	2015	2020
Transport	23.0	26.4	31.1	-
Travel	49.4	41.8	46.9	-
Other services	27.6	31.8	21.9	-

TRADE INDICES

- Terms of trade index
- Purchasing power index of exports



ECONOMIC TRENDS

Economic indicators

(millions of US\$ unless otherwise specified)

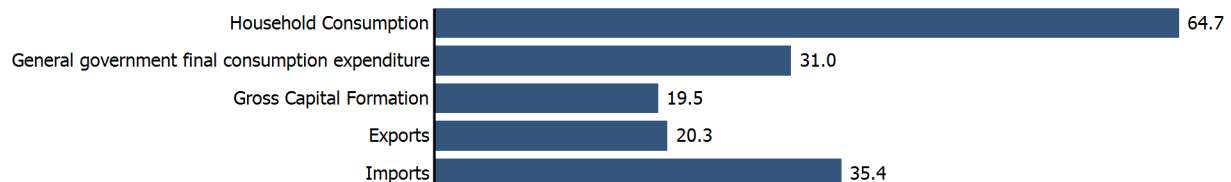
	2005	2010	2015	2020
GDP, current	5 703	6 081	5 324	5 954
GDP per capita, current US\$	22 037	22 821	19 492	21 197
Real GDP growth, y-on-y, %	1.40	-2.47	1.80	-3.00
Current account balance, % of GDP
Exchange rate (/US\$)	95.919	90.013	107.553	104.476

-3.0 %

Gross domestic product growth rate in 2020

GDP by expenditure in 2019

(as % of total GDP)



FRENCH POLYNESIA

FDI AND EXTERNAL FINANCIAL RESOURCES

Financial flows

(millions of US\$ unless otherwise specified)

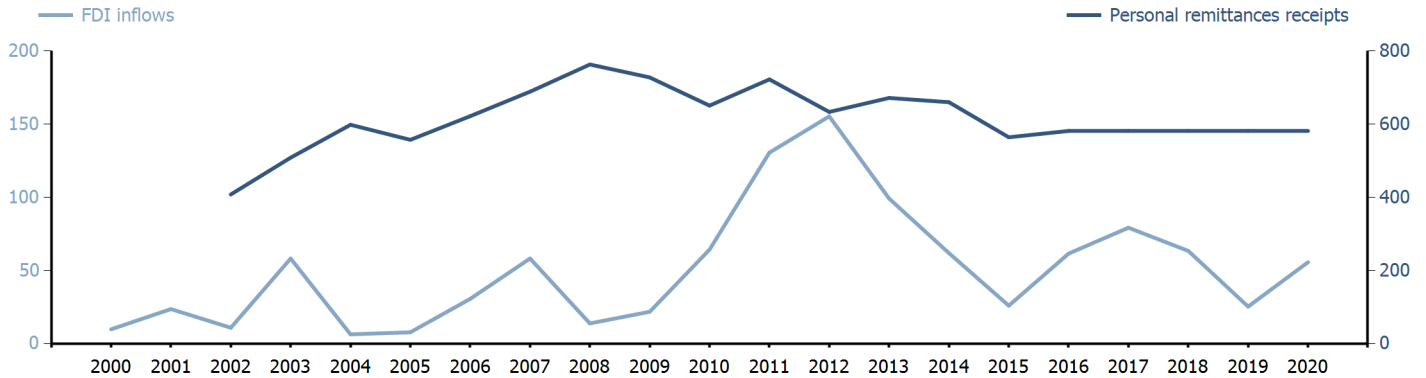
	2005	2010	2015	2020
FDI inflows	7.82	64.30	26.01	55.67
FDI outflows	15.76	37.80	22.74	-2.43
Personal remittances, % of GDP	9.77	10.70	10.60	9.77

0 %

FDI outflows as % of GDP in 2020

Financial flows trends

(millions of US\$)



TRADE IN GOODS AND SERVICES

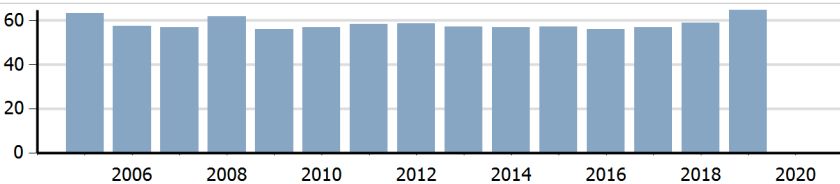
Trade balance indicators²

(as % and index)

	2005	2010	2015	2020
Balance, % of GDP	-18.05	-19.85	-15.06	-
Balance, % of imports	-44.46	-51.79	-41.72	-
Normalized balance	-0.286	-0.349	-0.264	-

Trade openness²

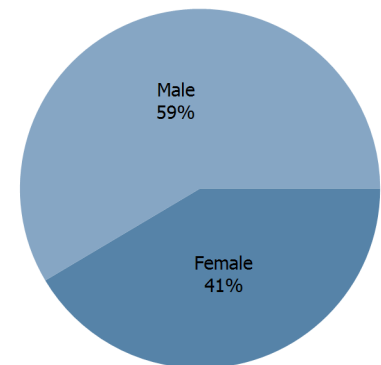
(sum of imports and exports as % of GDP)



LABOUR FORCE

Labour force by gender in 2020

(as % of total labour force, all sectors)



OTHER INDICATORS

Maritime transport indicators

	2005	2010	2015	2020
Merchant fleet, national flag (thousands of DWT)	..	1	11	22
Liner shipping connectivity index (maximum 2006 = 100 for China)	..	10.46	9.14	14.22
Container port throughput (TEU)	..	-	-	-

0.001 %

Share of the total world merchant fleet in 2020

Information economy indicators

(as % of)

	2005	2010	2015	2020
Share of ICT goods, % of total exports	0.24	0.79	0.80	..
Share of ICT goods, % of total imports	5.07	6.01	4.63	..
Share of workforce involved in the ICT sector

FRENCH POLYNESIA

Source: UNCTADstat (<http://unctadstat.unctad.org>)

Notes:

- 1 Land area refers to the total area of a country excluding area under inland water bodies. It differs from the country area, that includes area under inland water bodies, but excludes offshore territorial waters.
- 2 Statistics presented correspond to the 6th edition of the IMF Balance of Payments and International Investment Position Manual (BPM6, 2009).
- n Estimated. Data refers to 2016.

Symbols for missing values:

- 0 Zero means that the amount is nil or negligible
- .. Not available or not separately reported
- Not applicable
- ... Not available, including no quotation
- # Non-relevant calculation
- Not publishable
- *** Negative accumulation of flows; Value included in regional and global totals

Abbreviations & acronyms:

- DWT: Dead weight tons
- FDI: Foreign direct investment
- GDP: Gross domestic product
- ICT: Information and communication technology
- TEU: Twenty foot equivalent unit
- US\$: United States dollar

Disclaimer:

The designations employed and the presentation of the material on UNCTADstat do not imply the expression of any opinion whatsoever on the part of the secretariat of the United Nations concerning the legal status of any country, territory, city or area, or of its authorities, or concerning the delimitation of its frontiers or boundaries.

Where the designations "economy" or "country or area" appear in texts or tables, they cover regions, countries, territories, cities or areas.

UNCTAD strives for the highest level of accuracy and is committed to promptly correcting any errors on its part. It does not guarantee or make any express or implied representations regarding the accuracy, reliability, correctness, fitness for use for a particular purpose, or otherwise, whatsoever, of any of the tables in UNCTADstat.

Generation date: 05 January 2022