

GENERAL PROFILE: CHINA

GENERAL INFORMATION FOR 2020

Population
1 439.324 Millions

Exchange rate
6.901 CNY/US\$

GDP
14 736 249 Millions current US\$

Land area¹
(n) 9 388 210 km²

CPI growth
2.39 %

GDP growth
2.35 %

INTERNATIONAL MERCHANDISE TRADE

Total merchandise trade

(millions of US\$)

	2005	2010	2015	2020
Merchandise exports	761 953	1 577 754	2 273 468	2 590 221
Merchandise imports	659 953	1 396 247	1 679 566	2 057 217
Merchandise trade balance	102 000	181 507	593 902	533 004

+3.6 %

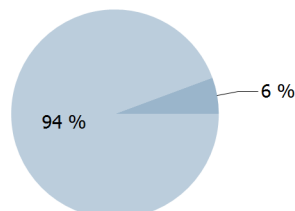
Merchandise exports growth rate in 2020

Export structure by product group in 2020

(as % of total exports)

Manufactured goods

Other



Top 5 partners in 2020

(exports, millions of US\$)

United States of America	452 577
China, Hong Kong SAR	272 651
Japan	142 642
Viet Nam	113 814
Korea, Republic of	112 504

INTERNATIONAL TRADE IN SERVICES

Total trade in services²

(millions of US\$)

	2005	2010	2015	2020
Services exports	78 469	(e) 178 339	218 634	280 629
Services imports	83 971	(e) 193 401	435 541	381 088
Services trade balance	-5 502	(e) -15 063	-216 907	-100 459

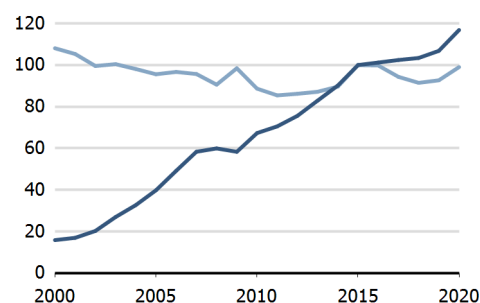
Services exports by main category²

(as % of total services)

	2005	2010	2015	2020
Transport	19.7	19.2	17.7	20.5
Travel	37.3	25.7	20.6	6.1
Other services	26.0	(e) 41.0	50.8	64.4

TRADE INDICES

— Terms of trade index
— Purchasing power index of exports



ECONOMIC TRENDS

Economic indicators

(millions of US\$ unless otherwise specified)

	2005	2010	2015	2020
GDP, current	2 285 961	6 087 192	11 061 573	14 736 249
GDP per capita, current US\$	1 718	4 447	7 863	10 238
Real GDP growth, y-on-y, %	11.39	10.39	7.04	2.35
Current account balance, % of GDP	5.79	3.91	2.65	1.86
Exchange rate (/US\$)	8.194	6.770	6.227	6.901

+2.3 %

Gross domestic product growth rate in 2020

GDP by expenditure in 2019

(as % of total GDP)

Household Consumption	38.9
General government final consumption expenditure	16.7
Gross Capital Formation	43.3
Exports	18.8
Imports	17.3

CHINA

FDI AND EXTERNAL FINANCIAL RESOURCES

Financial flows

(millions of US\$ unless otherwise specified)

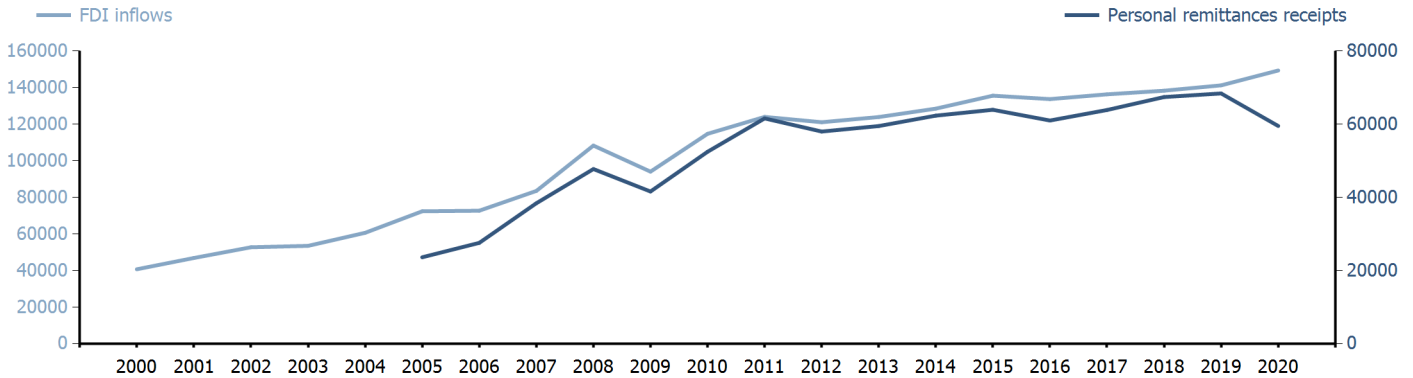
	2005	2010	2015	2020
FDI inflows	72 406.00	114 734.00	135 577.00	149 342.00
FDI outflows	12 261.17	68 811.31	145 667.15	132 940.00
Personal remittances, % of GDP	1.03	0.86	0.58	0.40

+0.9 %

FDI outflows as % of GDP in 2020

Financial flows trends

(millions of US\$)



TRADE IN GOODS AND SERVICES

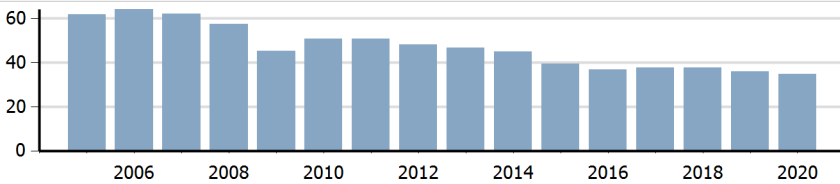
Trade balance indicators²

(as % and index)

	2005	2010	2015	2020
Balance, % of GDP	5.20	(e) 3.66	3.25	2.81
Balance, % of imports	18.31	(e) 15.56	17.95	17.54
Normalized balance	0.084	(e) 0.072	0.082	0.081

Trade openness²

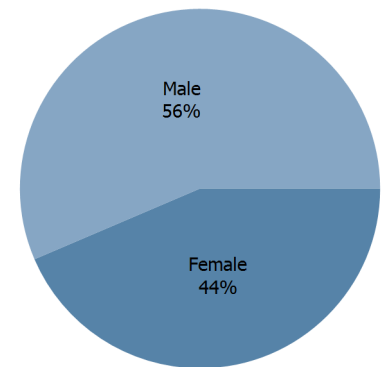
(sum of imports and exports as % of GDP)



LABOUR FORCE

Labour force by gender in 2020

(as % of total labour force, all sectors)



OTHER INDICATORS

Maritime transport indicators

	2005	2010	2015	2020
Merchant fleet, national flag (thousands of DWT)	29 793	45 157	78 364	102 536
Liner shipping connectivity index (maximum 2006 = 100 for China)	..	117.90	138.51	158.63
Container port throughput (TEU)	..	131 989 200	193 734 000	245 103 781

4.950 %

Share of the total world merchant fleet in 2020

Information economy indicators

(as % of)

	2005	2010	2015	2020
Share of ICT goods, % of total exports	30.72	29.12	26.56	27.09
Share of ICT goods, % of total imports	25.28	20.40	23.35	25.12
Share of workforce involved in the ICT sector

CHINA

Source: UNCTADstat (<http://unctadstat.unctad.org>)

Notes:

- 1 Land area refers to the total area of a country excluding area under inland water bodies. It differs from the country area, that includes area under inland water bodies, but excludes offshore territorial waters.
- 2 Statistics presented correspond to the 6th edition of the IMF Balance of Payments and International Investment Position Manual (BPM6, 2009).
- e Estimated.
- n Estimated. Data refers to 2016.

Symbols for missing values:

- 0 Zero means that the amount is nil or negligible
- .. Not available or not separately reported
- Not applicable
- ... Not available, including no quotation
- # Non-relevant calculation
- Not publishable
- *** Negative accumulation of flows; Value included in regional and global totals

Abbreviations & acronyms:

- DWT: Dead weight tons
- FDI: Foreign direct investment
- GDP: Gross domestic product
- ICT: Information and communication technology
- TEU: Twenty foot equivalent unit
- US\$: United States dollar

Disclaimer:

The designations employed and the presentation of the material on UNCTADstat do not imply the expression of any opinion whatsoever on the part of the secretariat of the United Nations concerning the legal status of any country, territory, city or area, or of its authorities, or concerning the delimitation of its frontiers or boundaries.

Where the designations "economy" or "country or area" appear in texts or tables, they cover regions, countries, territories, cities or areas.

UNCTAD strives for the highest level of accuracy and is committed to promptly correcting any errors on its part. It does not guarantee or make any express or implied representations regarding the accuracy, reliability, correctness, fitness for use for a particular purpose, or otherwise, whatsoever, of any of the tables in UNCTADstat.

Generation date: 05 January 2022