

GENERAL PROFILE: CHILE

GENERAL INFORMATION FOR 2023

Population
19.659 Millions

Exchange rate
..

GDP
335 533 Millions current US\$

Land area¹
(u) 743 532 km²

CPI growth
7.58 %

GDP growth
0.22 %

INTERNATIONAL MERCHANDISE TRADE

Total merchandise trade

(millions of US\$)

	2005	2010	2015	2023
Merchandise exports	41 267	71 109	62 035	94 557
Merchandise imports	32 735	59 207	62 388	85 308
Merchandise trade balance	8 532	11 901	-353	9 249

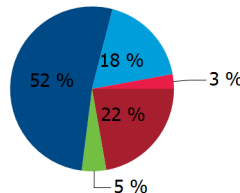
-4.1 %

Merchandise exports growth rate in 2023

Export structure by product group in 2023

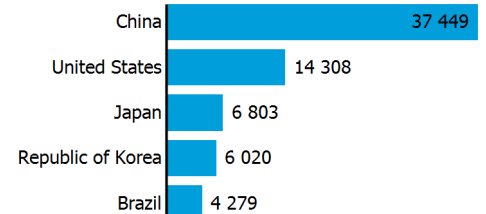
(as % of total exports)

- All food items
- Agricultural raw materials
- Ores and metals
- Manufactured goods
- Other



Top 5 partners in 2023

(exports, millions of US\$)



INTERNATIONAL TRADE IN SERVICES

Total trade in services²

(millions of US\$)

	2005	2010	2015	2023
Services exports	6 659	10 199	8 557	(e) 9 700
Services imports	7 883	13 167	14 128	(e) 19 957
Services trade balance	-1 225	-2 968	-5 571	(e) -10 257

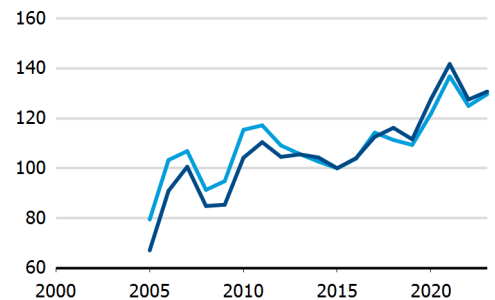
Services exports by main category²

(as % of total services)

	2005	2010	2015	2023
Transport	65.8	63.4	37.9	(e) 37.5
Travel	15.3	15.4	29.2	(e) 23.0
Other services	(e) 18.9	(e) 21.2	(e) 32.9	(e) 39.5

TRADE INDICES

- Terms of trade index
- Purchasing power index of exports



ECONOMIC TRENDS

Economic indicators

(millions of US\$ unless otherwise specified)

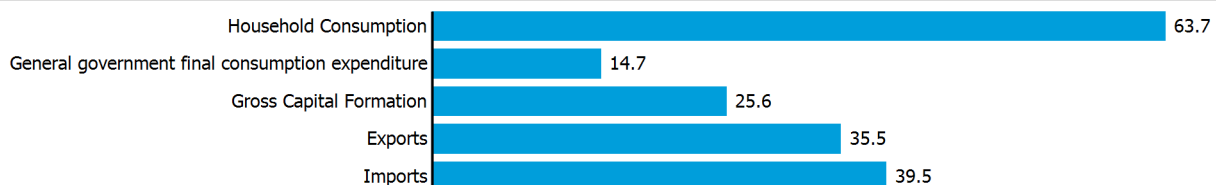
	2005	2010	2015	2023
GDP, current	122 315	217 105	242 497	335 533
GDP per capita, current US\$	7 482	12 636	13 436	17 068
Real GDP growth, y-on-y, %	5.84	5.85	2.15	0.22
Current account balance, % of GDP	1.90	0.89	-2.72	-3.57
Exchange rate (/US\$)	559.768	510.249	654.124	..

+0.2 %

Gross domestic product growth rate in 2023

GDP by expenditure in 2022

(as % of total GDP)



CHILE

FDI AND EXTERNAL FINANCIAL RESOURCES

Financial flows

(millions of US\$ unless otherwise specified)

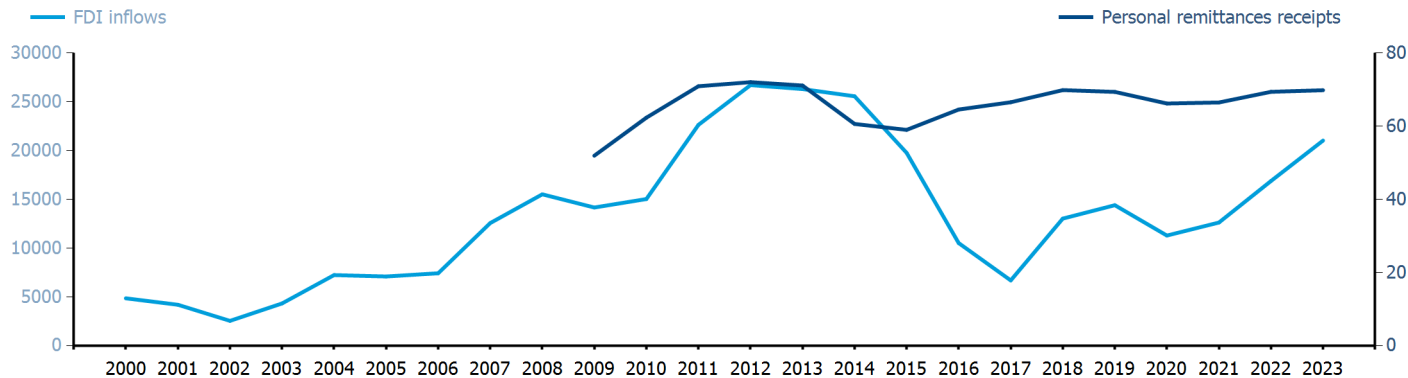
	2005	2010	2015	2023
FDI inflows	7 096.89	15 033.19	19 764.10	21 026.94
FDI outflows	2 135.15	8 474.22	17 848.95	5 567.10
Personal remittances, % of GDP	..	0.03	0.02	0.02

+1.7 %

FDI outflows as % of GDP in 2023

Financial flows trends

(millions of US\$)



TRADE IN GOODS AND SERVICES

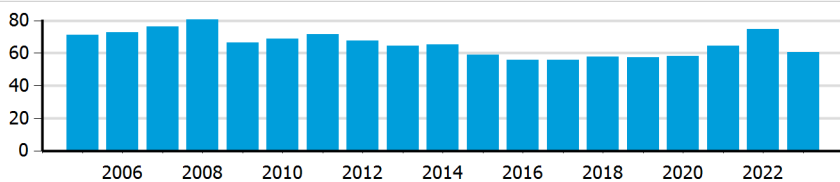
Trade balance indicators²

(as % and index)

	2005	2010	2015	2023
Balance, % of GDP	8.37	6.15	-0.82	(e) 1.51
Balance, % of imports	26.60	19.55	-2.75	(e) 5.11
Normalized balance	0.117	0.089	-0.014	(e) 0.025

Trade openness²

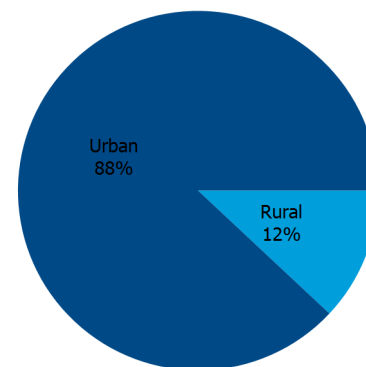
(sum of imports and exports as % of GDP)



LIVING AREA

Population by living area in 2023

(% of population)



OTHER INDICATORS

Maritime transport indicators

	2005	2010	2015	2023
Merchant fleet, national flag (thousands of DWT)	1 143	1 096	977	953
Container port throughput (TEU)	..	3 157 758	3 956 842	-

0.042 %

Share of the total world merchant fleet in 2023

Information economy indicators

(as % of)

	2005	2010	2015	2023
Share of ICT goods, % of total exports	0.53	0.39	0.40	0.21
Share of ICT goods, % of total imports	7.76	7.78	7.96	5.93
Share of workforce involved in the ICT sector

CHILE

Source: UN Trade and Development, UNCTADstat (<https://unctadstat.unctad.org/datacentre>)

Notes:

- 1 Land area refers to the total area of a country excluding area under inland water bodies. It differs from the country area, that includes area under inland water bodies, but excludes offshore territorial waters.
- 2 Statistics presented correspond to the 6th edition of the IMF Balance of Payments and International Investment Position Manual (BPM6, 2009).
- e Estimated.
- u Estimated. Data refers to 2020.

Symbols for missing values:

- 0 Zero means that the amount is nil or negligible
- .. No value reported or collected
- Not applicable
- ... Not available, including no quotation
- # Non-relevant calculation
- Not publishable
- *** Negative accumulation of flows; Value included in regional and global totals

Abbreviations & acronyms:

- DWT: Dead weight tons
- FDI: Foreign direct investment
- GDP: Gross domestic product
- ICT: Information and communication technology
- TEU: Twenty foot equivalent unit
- US\$: United States dollar

Disclaimer:

The designations employed and the presentation of the material on the UNCTAD Data Hub do not imply the expression of any opinion whatsoever on the part of the secretariat of the United Nations concerning the legal status of any country, territory, city or area, or of its authorities, or concerning the delimitation of its frontiers or boundaries.

Where the designations "economy" or "country or area" appear in texts or tables, they cover regions, countries, territories, cities or areas.

UNCTAD strives for the highest level of accuracy and is committed to promptly correcting any errors on its part. It does not guarantee or make any express or implied representations regarding the accuracy, reliability, correctness, fitness for use for a particular purpose, or otherwise, whatsoever, of any of the tables in the UNCTAD Data Hub.

Generation date: 15 April 2025